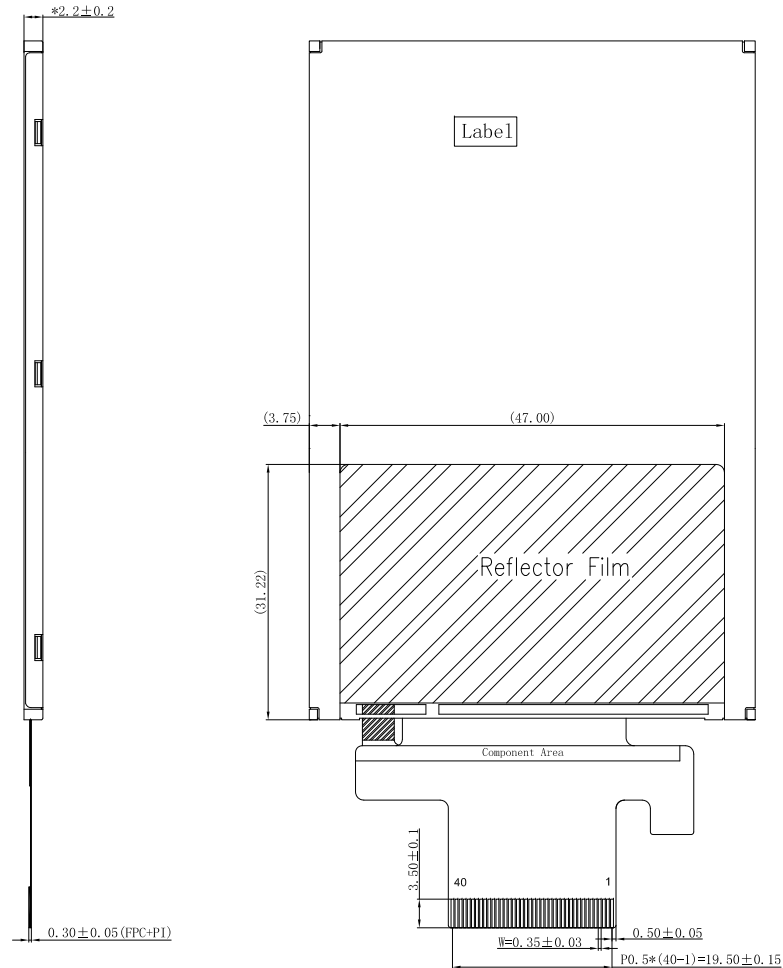
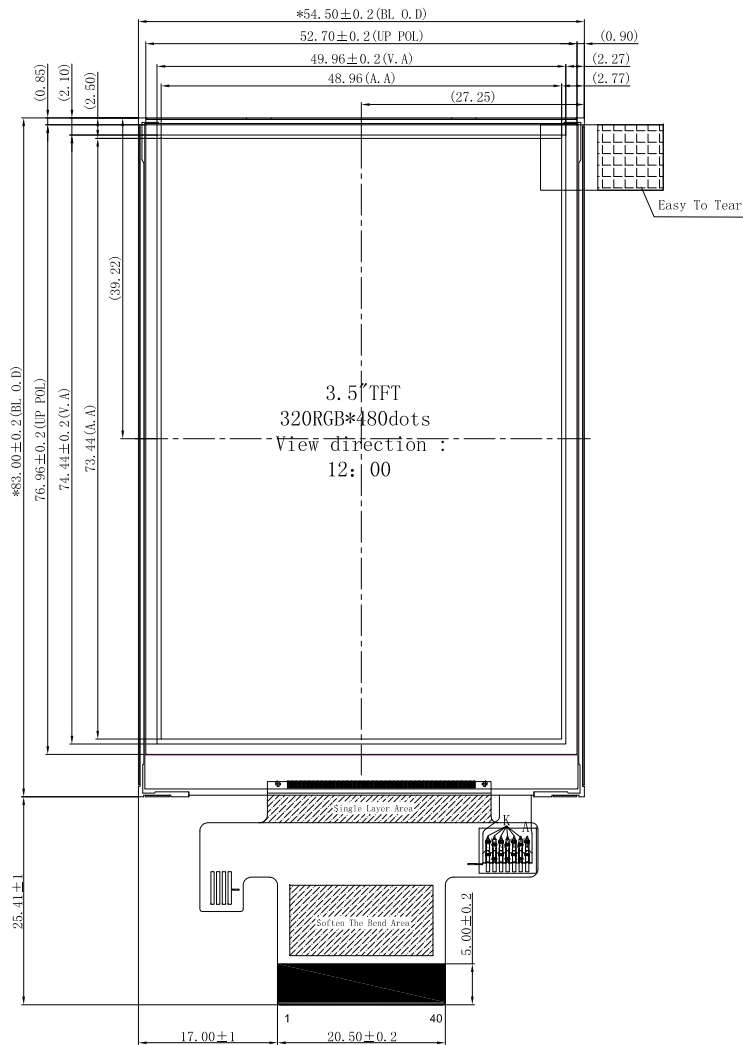


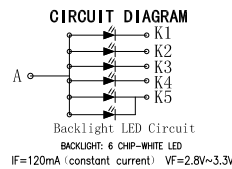
REV.	CHANGE CONTENT	BY	DATE
A	FIRST	Mr.Han	20.12.16



PIN	NAME
1	GND
2	VDD
3	IOWCC
4	CS
5	RS
6	WR
7	RD
8	RESET
9	D0
10	D1
11	D2
12	D3
13	D4
14	D5
15	D6
16	D7
17	D8
18	D9
19	D10
20	D11
21	D12
22	D13
23	D14
24	D15
25	GND
26	YU
27	XL
28	YD
29	XR
30	LEDK1
31	LEDK2
32	LEDK3
33	LEDK4
34	LEDK5
35	LEDA
36	LEDA
37	GND
38	NC
39	NC
40	NC

TFT NOTE:

显示类型 Display type	3.5inch 320RGB*480
显示模式 Display mode	Transmissive Normally White
视察方向 Viewing direction	<input type="checkbox"/> 6 <input type="checkbox"/> 12 <input type="checkbox"/> 3 <input type="checkbox"/> 9 <input type="checkbox"/> Free
对比度 Contrast ratio	500:1
亮度 Luminance	300 cd/m ² (TYP)
接口类型 Interface	<input type="checkbox"/> SPI <input type="checkbox"/> LVDS <input type="checkbox"/> MIPI <input type="checkbox"/> MCU
供电电压 VDD	<input type="checkbox"/> 3.3V <input type="checkbox"/> 5V
工作温度 Operation temperature	-20°C to 70°C
存储温度 Storage temperature	-30°C to 80°C
驱动芯片型号 Driver IC	IL19488
FPC连接方式 FPC Connection	<input checked="" type="checkbox"/> Plug-in type <input type="checkbox"/> welded
未标注公差 Unmarked tolerance	$\leq 20\mu\text{m}, \pm 0.05\text{mm}$ $\geq 20\text{mm}, \pm 0.2\text{mm}$



LHD HTDISPLAY Co., Ltd.

DESIGN	HK	2020.12.16
CHECKED	JYQ	2020.12.16
APPROVED	XYP	2020.12.16

DRAWING No. : HT0350AT08A

DRAWING TITLE: TFT

FILE NO. : 1

REV. : A

SCALE: 1:1

PROJECTION:



UNIT: mm

SHEET: 1/1