




3.5"-10.1" LCM&TFT Module manufacturer  
Email: [szmex.tft@mail.com](mailto:szmex.tft@mail.com) [melody.hsia@sat-sz.com](mailto:melody.hsia@sat-sz.com)  
Tel.:0086 769 22980021 Fax:0086 769 22985588  
[www.sat-sz.com](http://www.sat-sz.com)

# SPECIFICATION

**Customer:** \_\_\_\_\_  
**Model Name:** SAT101BO50D24Y0-501430-TP  
**SPEC NO.:** \_\_\_\_\_  
**Date:** \_\_\_\_\_  
**Version:** \_\_\_\_\_

Preliminary Specification  
 Final Specification

Approved by	Comment

Approved by	Reviewed by	Prepared by
		

**Record of Revision**

Version	Revise Date	Page	Content
Pre-spec.A	2015/03/25		Initial Release

视安通集团SAT GROUP

1. General Specifications .....	4
2. Pin Assignment .....	5
3. Operation Specifications .....	7
3.1. Absolute Maximum Rating .....	7
3.1.1. Typical Operation Conditions .....	8
3.1.2. Backlight Drving Conditions .....	8
3.2. Power Sequence .....	9
3.3. Timing Characteristics .....	10
3.3.1. AC Electrical Characteristics .....	10
3.3.2. Input Clock and Data Timing Diagram .....	11
3.3.3. Timing .....	12
3.3.4. Data Input Format .....	13
4. Optical Specifications .....	15
5. Reliability Test Items .....	19
6. General Precautions .....	20
6.1. Safety .....	20
6.2. Handling .....	20
6.3. Static Electricity .....	20
6.4. Storage .....	20
6.5. Cleaning .....	20
7. Mechanical Drawing .....	21
<b>8. Touch Panel Specification .....</b>	<b>22</b>
<b>8.1 Electrical Characteristics .....</b>	<b>22</b>
<b>8.2 Optical Characteristcs .....</b>	<b>22</b>
<b>8.3 Mechanical Characteristics .....</b>	<b>22</b>
<b>8.4 Mechanical Drawing .....</b>	<b>23</b>
<b>9. Package Drawing .....</b>	<b>25</b>
<b>10. ProductIDRule .....</b>	<b>26</b>

## 1. General Specifications

No.	Item	Specification	Remark
1	LCD size	10.1 inch(Diagonal)	
2	Driver element	a-Si TFT active matrix	
3	Resolution	1024 × 3(RGB) × 600	
4	Display mode	Normally White, Transmissive	
5	Pixel pitch	0.2175(H) X 0.2088(V) X RGB mm	
6	Active area	222.72(H) X 125.28(V) mm	
7	Outline dimensions	235(H) X 143(V) X 6.5(D) mm	
8	Surface treatment	Anti-Glare	
9	Color arrangement	RGB-stripe	
10	Interface	TTL RGB-24bit parallel interface	
11	Backlight Power consumption	TBD	
12	Panel Power consumption	TBD	
13	Weight	TBD	

## 2. Pin Assignment

FPC Connector is used for the module electronics interface. The recommended model is FH12A-50S-0.5SH manufactured by Hirose.

Pin No.	Symbol	I/O	Function	Remark
1	LED+	P	Power for LED backlight(anode)	
2	LED+	P	Power for LED backlight(anode)	
3	LED-	P	Power for LED backlight(Cathode)	
4	LED-	P	Power for LED backlight(Cathode)	
5	GND	P	Power ground	
6	V <sub>COM</sub>	I	Common voltage	
7	DVDD	P	Power for Digital Circuit	
8	MODE	I	DE/SYNC mode select	Note 1
9	DE	I	Data Input Enable	
10	VS	I	Vertical Sync Input	
11	HS	I	Horizontal Sync Input	
12	B7	I	Blue data(MSB)	
13	B6	I	Blue data	
14	B5	I	Blue data	
15	B4	I	Blue data	
16	B3	I	Blue data	
17	B2	I	Blue data	
18	B1	I	Blue data	Note 2
19	B0	I	Blue data(LSB)	Note 2
20	G7	I	Green data(MSB)	
21	G6	I	Green data	
22	G5	I	Green data	
23	G4	I	Green data	
24	G3	I	Green data	
25	G2	I	Green data	
26	G1	I	Green data	Note 2

27	G0	I	Green data(LSB)	Note 2
28	R7	I	Red data(MSB)	
29	R6	I	Red data	
30	R5	I	Red data	
31	R4	I	Red data	
32	R3	I	Red data	
33	R2	I	Red data	
34	R1	I	Red data	Note 2
35	R0	I	Red data(LSB)	Note 2
36	GND	P	Power Ground	
37	DCLK	I	Sample clock	Note 3
38	GND	P	Power Ground	
39	L/R	I	Left / right selection	Note 4,5
40	U/D	I	Up/down selection	Note 4,5
41	V <sub>GH</sub>	P	Gate ON Voltage	
42	V <sub>GL</sub>	P	Gate OFF Voltage	
43	AV <sub>DD</sub>	P	Power for Analog Circuit	
44	RESET	I	Global reset pin.	Note 6
45	NC	-	No connection	
46	V <sub>COM</sub>	I	Common Voltage	
47	DITHE	I	Dithering function	Note 7
48	GND	P	Power Ground	
49	NC	-	No connection	
50	NC	-	No connection	

I: input, O: output, P: Power

Note 1: DE/SYNC mode select. Normally pull high.

When select DE mode, MODE="1", VS and HS must pull high.

When select SYNC mode, MODE="0", DE must be grounded.

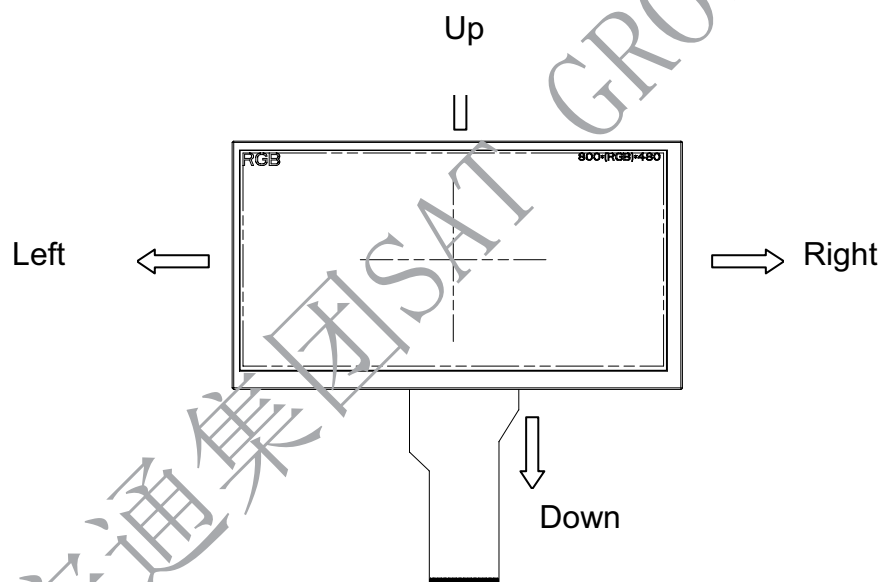
Note 2: When input 18 bits RGB data, the two low bits of R,G and B data must be grounded.

Note 3: Data shall be latched at the falling edge of DCLK.

Note 4: Selection of scanning mode

Setting of scan control input		Scanning direction
U/D	L/R	
GND	DV <sub>DD</sub>	Up to down, left to right
DV <sub>DD</sub>	GND	Down to up, right to left
GND	GND	Up to down, right to left
DV <sub>DD</sub>	DV <sub>DD</sub>	Down to up, left to right

Note 5: Definition of scanning direction.  
Refer to the figure as below:



Note 6: Global reset pin. Active low to enter reset state. Suggest to connect with an RC reset circuit for stability. Normally pull high.

Note 7: Dithering function enable control, normally pull high.  
When DITHB="1", Disable internal dithering function,  
When DITHB="0", Enable internal dithering function,

### 3. Operation Specifications

#### 3.1. Absolute Maximum Ratings

(Note 1)

Item	Symbol	Values		Unit	Remark
		Min.	Max.		
Power voltage	DV <sub>DD</sub>	-0.3	5.0	V	
	AV <sub>DD</sub>	-0.5	15	V	
	V <sub>GH</sub>	-0.3	40.0	V	
	V <sub>GL</sub>	-20.0	0.3	V	
	V <sub>GH</sub> -V <sub>GL</sub>	-	40.0	V	
Operation Temperature	T <sub>OP</sub>	-20	70	°C	
Storage Temperature	T <sub>ST</sub>	-30	80	°C	

Note 1: The absolute maximum rating values of this product are not allowed to be exceeded at any times. Should a module be used with any of the absolute maximum ratings exceeded, the characteristics of the module may not be recovered, or in an extreme case, the module may be permanently destroyed.



### 3.1.1. Typical Operation Conditions

( Note 1 )

Item	Symbol	Values			Unit	Remark
		Min.	Typ.	Max.		
Power voltage	DV <sub>DD</sub>	3.0	3.3	3.6	V	Note 2
	AV <sub>DD</sub>	10.65	10.85	11.05	V	
	V <sub>GH</sub>	20	21	22	V	
	V <sub>GL</sub>	-6.5	-5.5	-4.5	V	
Input signal voltage	V <sub>COM</sub>	3.6	3.8	4.0	V	
Input logic high voltage	V <sub>IH</sub>	0.7 DV <sub>DD</sub>	-	DV <sub>DD</sub>	V	Note 3
Input logic low voltage	V <sub>IL</sub>	0	-	0.3 DV <sub>DD</sub>	V	

Note 1: Be sure to apply DV<sub>DD</sub> and V<sub>GL</sub> to the LCD first, and then apply V<sub>GH</sub>.

Note 2: DV<sub>DD</sub> setting should match the signals output voltage (refer to Note 3) of customer's system board.

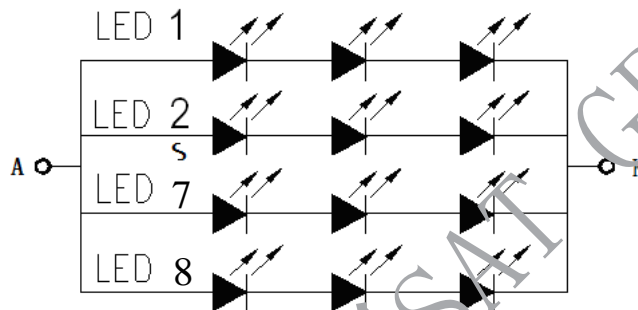
Note 3: DCLK,HS,VS,RESET,U/D, L/R,DE,R0~R7,G0~G7,B0~B7,MODE,DITHB.

### 3.1.2. Current Consumption

Item	Symbol	Values			Unit	Remark
		Min.	Typ.	Max.		
Current for Driver	I <sub>GH</sub>	-	5.6	-	mA	V <sub>GH</sub> =21V
	I <sub>GL</sub>	-	8.1	-	mA	V <sub>GL</sub> =-5.5V
	IDV <sub>DD</sub>	-	12.2	-	mA	V <sub>DD</sub> =3.3V
	IAV <sub>DD</sub>	-	29.7	-	mA	AV <sub>DD</sub> =10.85V

### 3.1.3. Backlight Driving Conditions (24 White Chips)

Parameter	Symbol	Min.	Typ.	Max.	Unit	Note
Supply voltage of white LED backlight	VL	8.7	9.6	10.5	V	Note 1
Current for LED backlight	IL	120	160	200	mA	
Luminance (on the module surface,BM-7)		100	140	-	cd/m <sup>2</sup>	
LED life time	-	20,000	-	-	Hr	Note 2

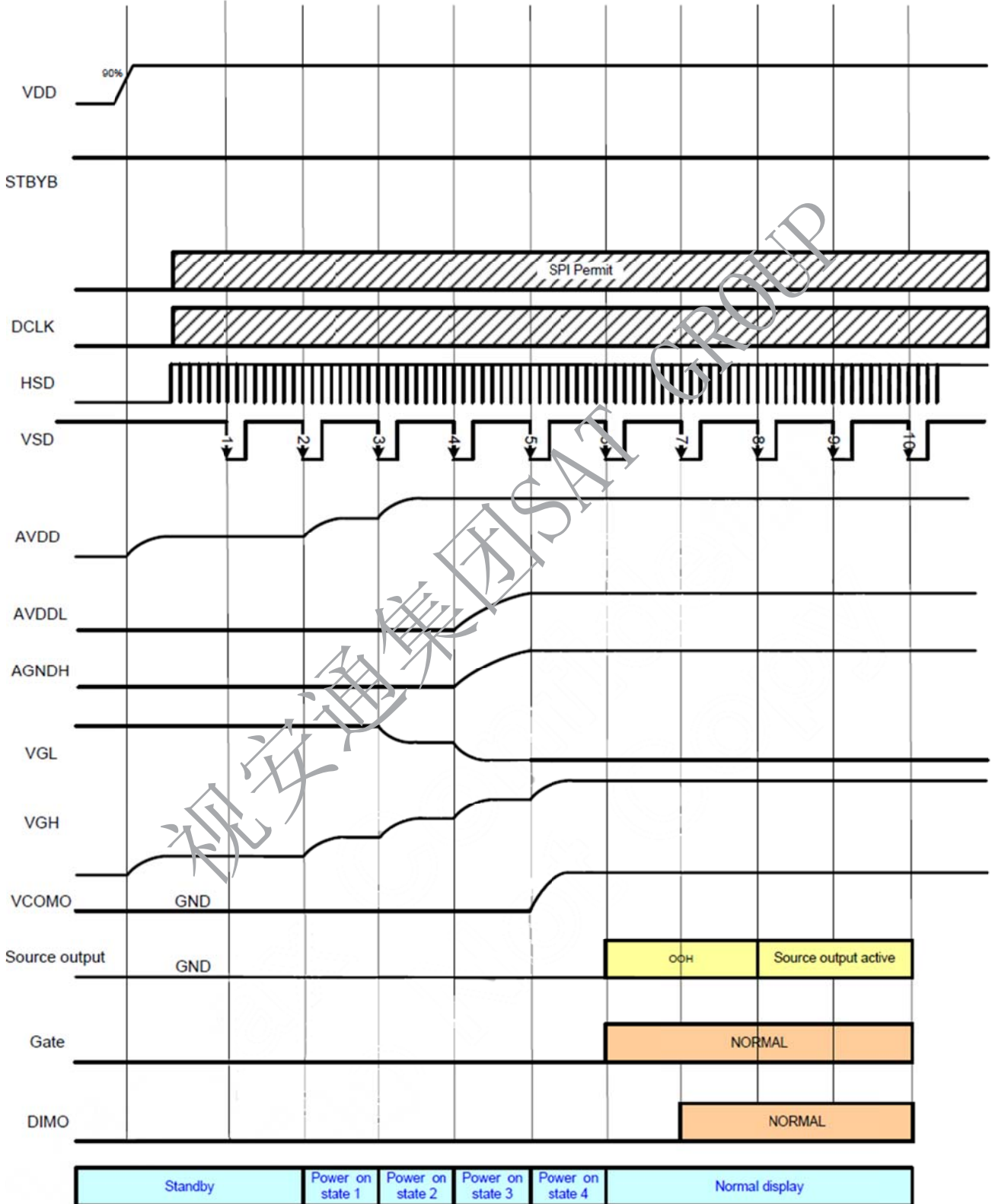


## 3.2. Power Sequence

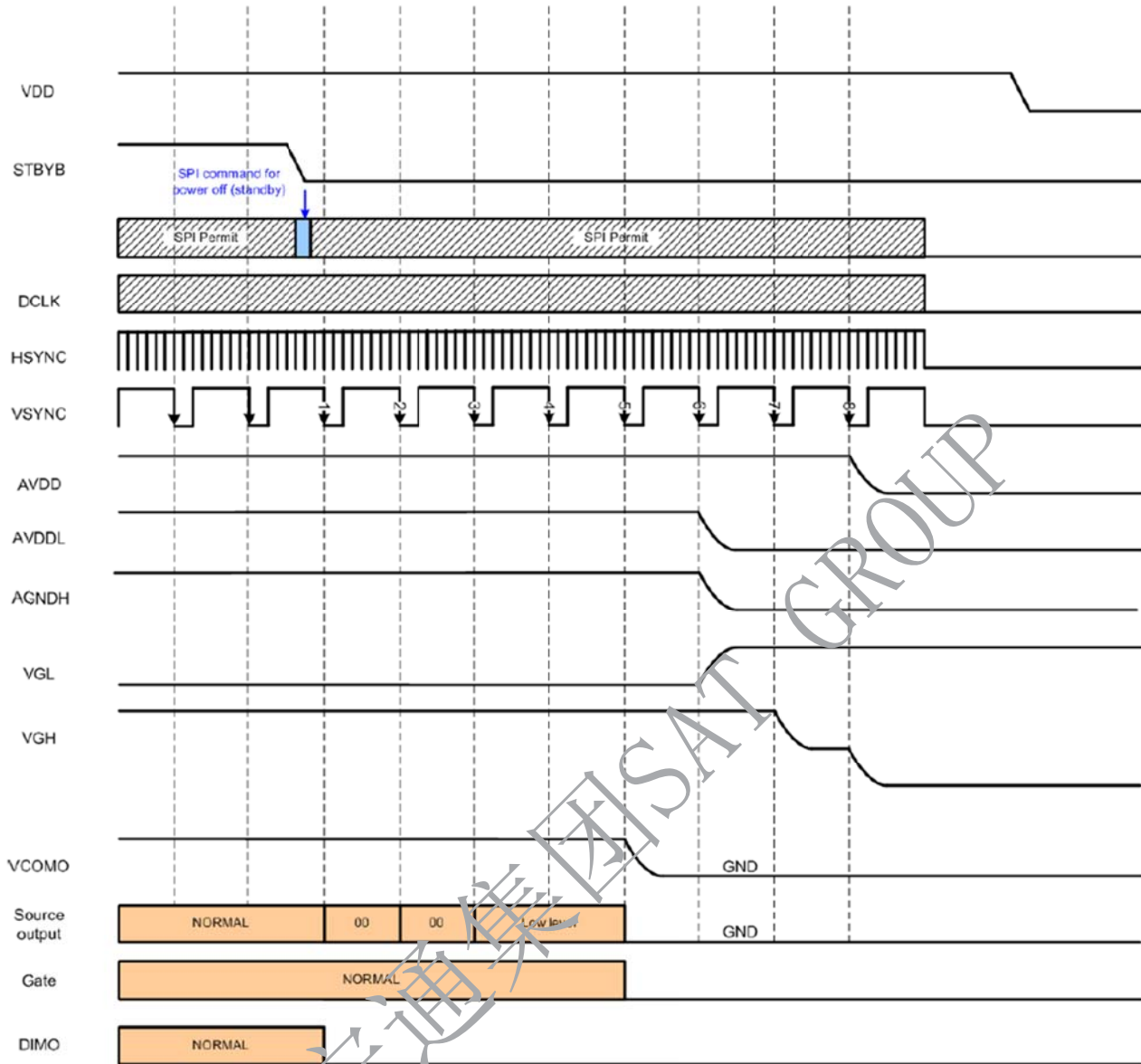
To prevent the device damage from latch up, the power on/off sequence shown below must be followed.

Power on: VDD, GND → AVDD, AGND → V1 to V14

Power off: V1 to V14 → AVDD, AGND → VDD, GND



Power on timing sequence



Power off timing sequence

Note: Low level=3FH, when NBW=L (Normally white)

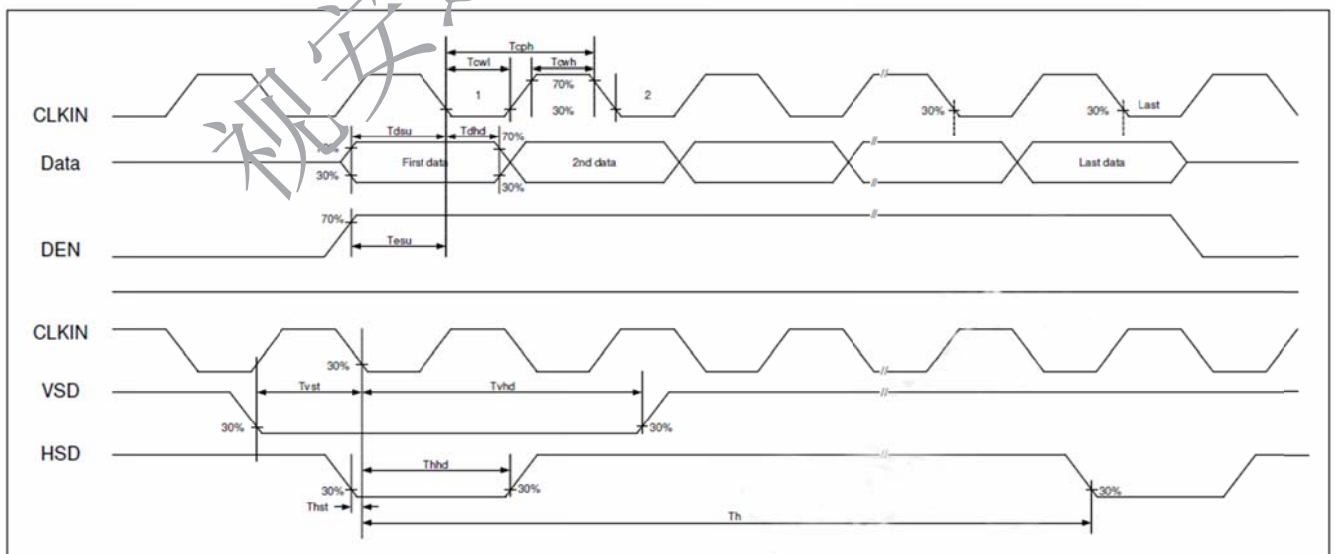
Low level=0CH, when NBW=H (Normally black)

## 3.3. Timing Characteristics

### 3.3.1. AC Electrical Characteristics

Parameter	Symbol	Spec.			Unit	Condition
		Min.	Typ.	Max.		
VDD Power On Slew rate	$T_{POR}$	-	-	20	ms	From 0V to 90% VDD
GRB pulse width	$T_{Rst}$	50	-	-	us	DCLK=65MHz
DCLK cycle time	$T_{cph}$	14	-	-	ns	
DCLK pulse duty	$T_{cwh}$	40	50	60	%	
VSD setup time	$T_{vst}$	5	-	-	ns	
VSD hold time	$T_{vhd}$	5	-	-	ns	
HSD setup time	$T_{hst}$	5	-	-	ns	
HSD hold time	$T_{hhd}$	5	-	-	ns	
Data set-up time	$T_{dsu}$	5	-	-	ns	D0[7:0], D1[7:0], D2[7:0] to DCLK
Data hold time	$T_{dhd}$	5	-	-	ns	D0[7:0], D1[7:0], D2[7:0] to DCLK
DE setup time	$T_{esu}$	5	-	-	ns	
DE hold time	$T_{ehd}$	5	-	-	ns	
Output stable time	$T_{sst}$	-	-	6	us	10% to 90% target voltage.CL=90pF, R=10K ohm(Cascade)
				3		Dual gate

### 3.3.2. Input Clock and Data Timing Diagram



### 3.3.3. Timing

#### DE mode

Parameter	Symbol	Spec.			Unit
		Min.	Typ.	Max.	
DCLK Frequency	fclk	40.8	51.2	67.2	MHz
Horizontal Display Area	thd	1024			DCLK
HSD Period	th	1114	1344	1400	DCLK
HSD Blanking	thb+ thfp	90	320	376	DCLK
Vertical Display Area	tvd	600			TH
VSD Period	tv	610	635	800	TH
VSD Blanking	tvbp+ tvfp	10	35	200	TH

#### HV mode

##### Horizontal timing

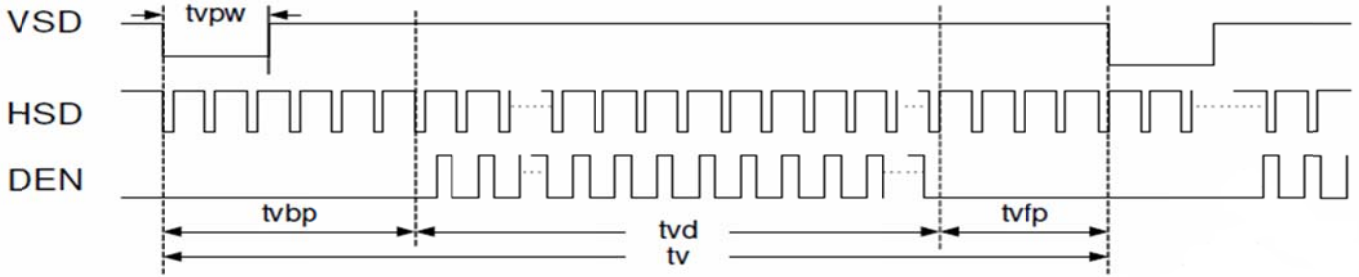
Parameter	Symbol	Spec.			Unit
		Min.	Typ.	Max.	
DCLK Frequency	fclk	44.9	51.2	63	MHz
Horizontal Display Area	thd	1024			DCLK
HSD Period	th	1200	1344	1400	DCLK
HSD Pulse Width	thpw	1	-	140	DCLK
HSD Back Porch	thbp	160			DCLK
HSD Front Porch	thfp	16	160	216	DCLK

##### Vertical Timing

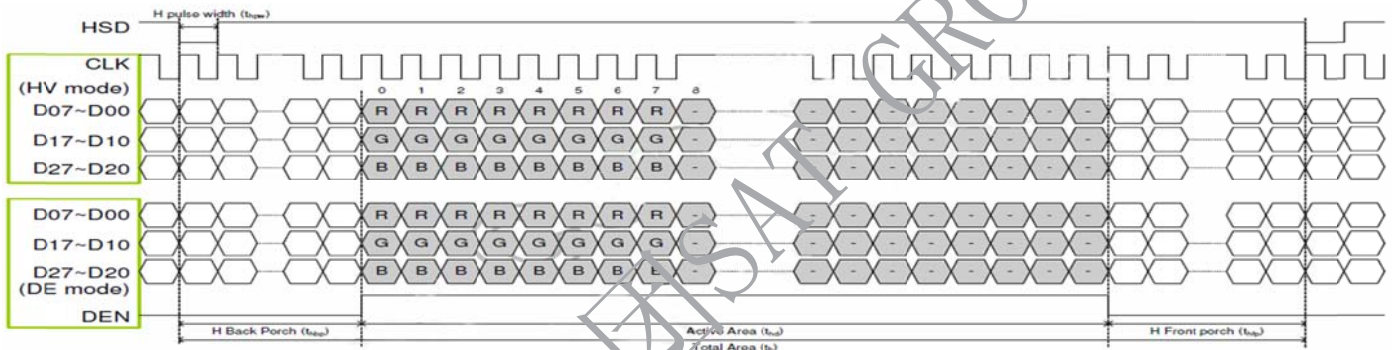
Parameter	Symbol	Spec.			Unit
		Min.	Typ.	Max.	
Vertical Display Area	tvd	600			TH
VSD Period	tv	624	635	750	TH
VSD Pulse Width	tvpw	1	-	20	TH
VSD Back Porch	tvbp	23			TH
VSD Front Porch	tvfp	1	12	127	TH

### 3.3.4. Data Input Format

#### Vertical Timing



#### Horizontal Timing



## 4. Optical Specifications

Item	Symbol	Condition	Min	Typ	Max	Unit	Remark	
View Angles	$\theta T$	$CR \geq 10$	30	40	--	Degree	Note1	
	$\theta B$		40	50	--			
	$\theta L$		40	50	--			
	$\theta R$		40	50	--			
Contrast Ratio	CR	$\theta=0^\circ$	400	450	--		Note4	
Response Time	$T_{ON} + T_{OFF}$	25°C	--	8	--	ms	Note3	
Chromaticity	White	Backlight is on	x	0.242	0.282	0.322		Note2 Note5 Note6
			y	0.282	0.321	0.362		
	Red		x	0.547	0.577	0.607		
			y	0.310	0.340	0.370		
	Green		x	0.285	0.315	0.345		
			y	0.588	0.618	0.648		
	Blue		x	0.119	0.149	0.179		
			y	0.034	0.124	0.154		
Uniformity	U		70	75	--	%	Note7	
NTSC			--	52	--	%		
Luminance	L		100	140	--	cd/m <sup>2</sup>	Note6	

### Test Conditions:

1.  $DV_{DD}=3.3V$ ,  $I_b = 160mA$ (Backlight current), the ambient temperature is 25°C.
2. The test systems refer to Note 2.



Note 1: Definition of viewing angle range

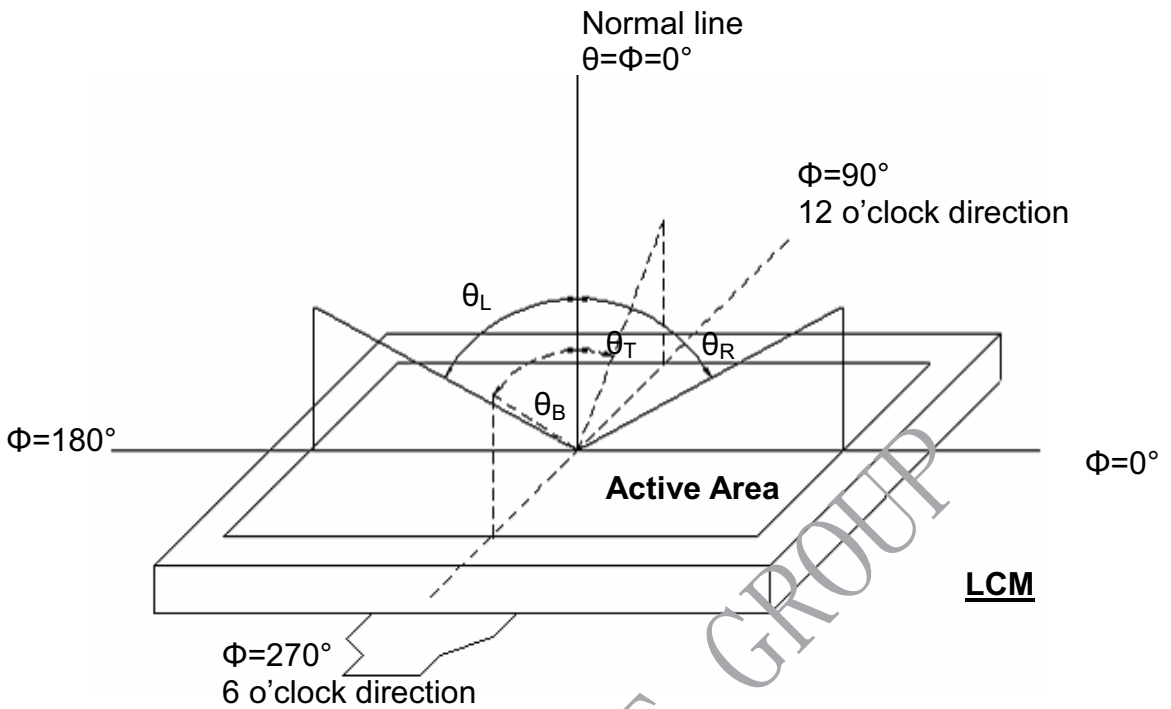


Fig. 4-1 Definition of viewing angle

Note 2: Definition of optical measurement system.

The optical characteristics should be measured in dark room. After 30 minutes operation, the optical properties are measured at the center point of the LCD screen. (Response time is measured by Photo detector TOPCON BM-7, other items are measured by BM-5A/Field of view:  $1^\circ$  /Height: 500mm.)

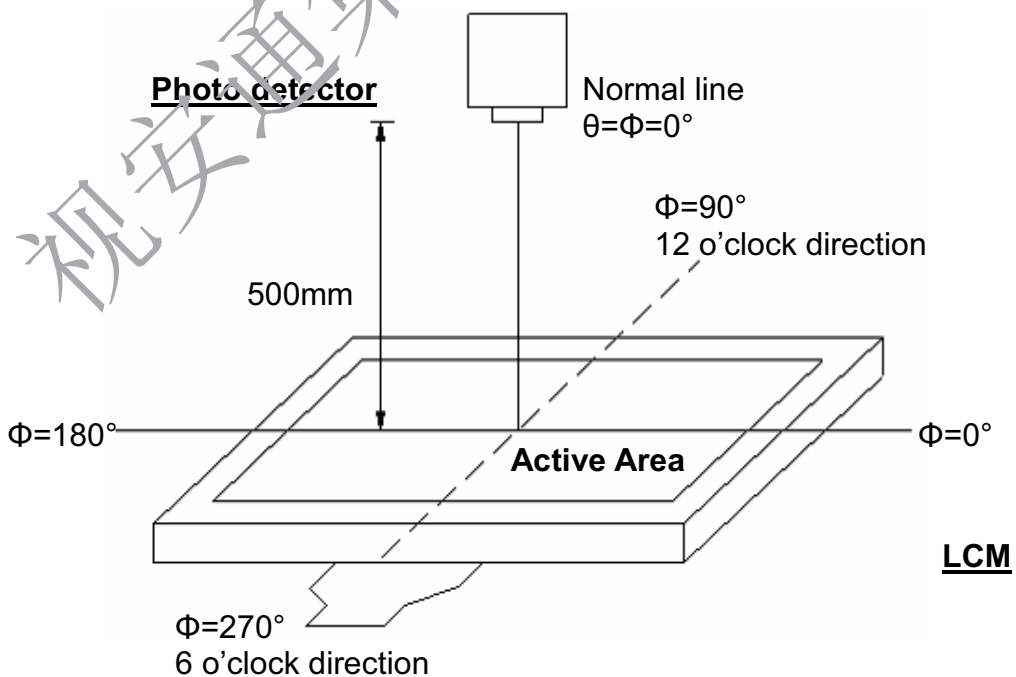


Fig. 4-2 Optical measurement system setup

**Note 3: Definition of Response time**

The response time is defined as the LCD optical switching time interval between "White" state and "Black" state. Rise time ( $T_{ON}$ ) is the time between photo detector output intensity changed from 90% to 10%. And fall time ( $T_{OFF}$ ) is the time between photo detector output intensity changed from 10% to 90%.

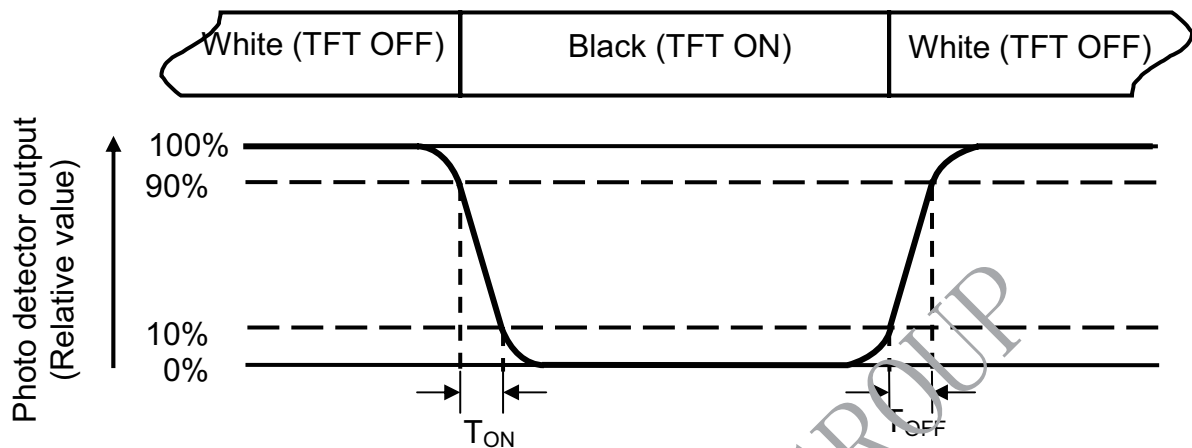


Fig. 4-3 Definition of response time

**Note 4: Definition of contrast ratio**

$$\text{Contrast ratio (CR)} = \frac{\text{Luminance measured when LCD on the "White" state}}{\text{Luminance measured when LCD on the "Black" state}}$$

**Note 5: Definition of color chromaticity (CIE1931)**

Color coordinates measured at center point of LCD.

**Note 6:** All input terminals LCD panel must be ground while measuring the center area of the panel.

Note 7: Definition of Luminance Uniformity

Active area is divided into 9 measuring areas (Refer to Fig. 4-4 ).Every measuring point is placed at the center of each measuring area.

$$\text{Luminance Uniformity (Yu)} = \frac{B_{min}}{B_{max}}$$

L-----Active area length      W----- Active area width

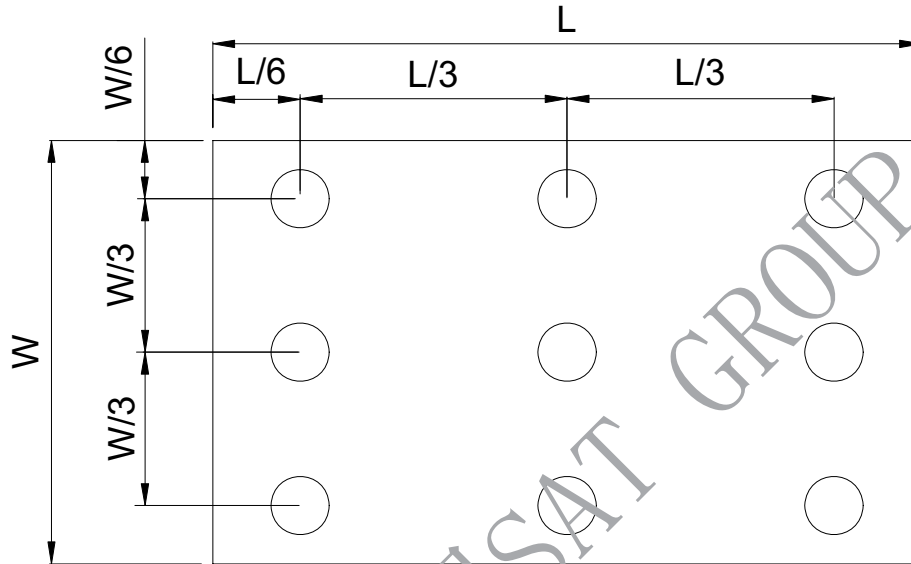


Fig. 4-4 Definition of measuring points

**B<sub>max</sub>**: The measured maximum luminance of all measurement position.

**B<sub>min</sub>**: The measured minimum luminance of all measurement position.



## 6. General Precautions

### 6.1. Safety

Liquid crystal is poisonous. Do not put it in your mouth. If liquid crystal touches your skin or clothes, wash it off immediately by using soap and water.

### 6.2. Handling

1. The LCD panel is plate glass. Do not subject the panel to mechanical shock or to excessive force on its surface.
2. The polarizer attached to the display is easily damaged. Please handle it carefully to avoid scratch or other damages.
3. To avoid contamination on the display surface, do not touch the module surface with bare hands.
4. Keep a space so that the LCD panels do not touch other components.
5. Put cover board such as acrylic board on the surface of LCD panel to protect panel from damages.
6. Transparent electrodes may be disconnected if you use the LCD panel under environmental conditions where the condensation of dew occurs.
7. Do not leave module in direct sunlight to avoid malfunction of the ICs.

### 6.3. Static Electricity

1. Be sure to ground module before turning on power or operating module.
2. Do not apply voltage which exceeds the absolute maximum rating value.

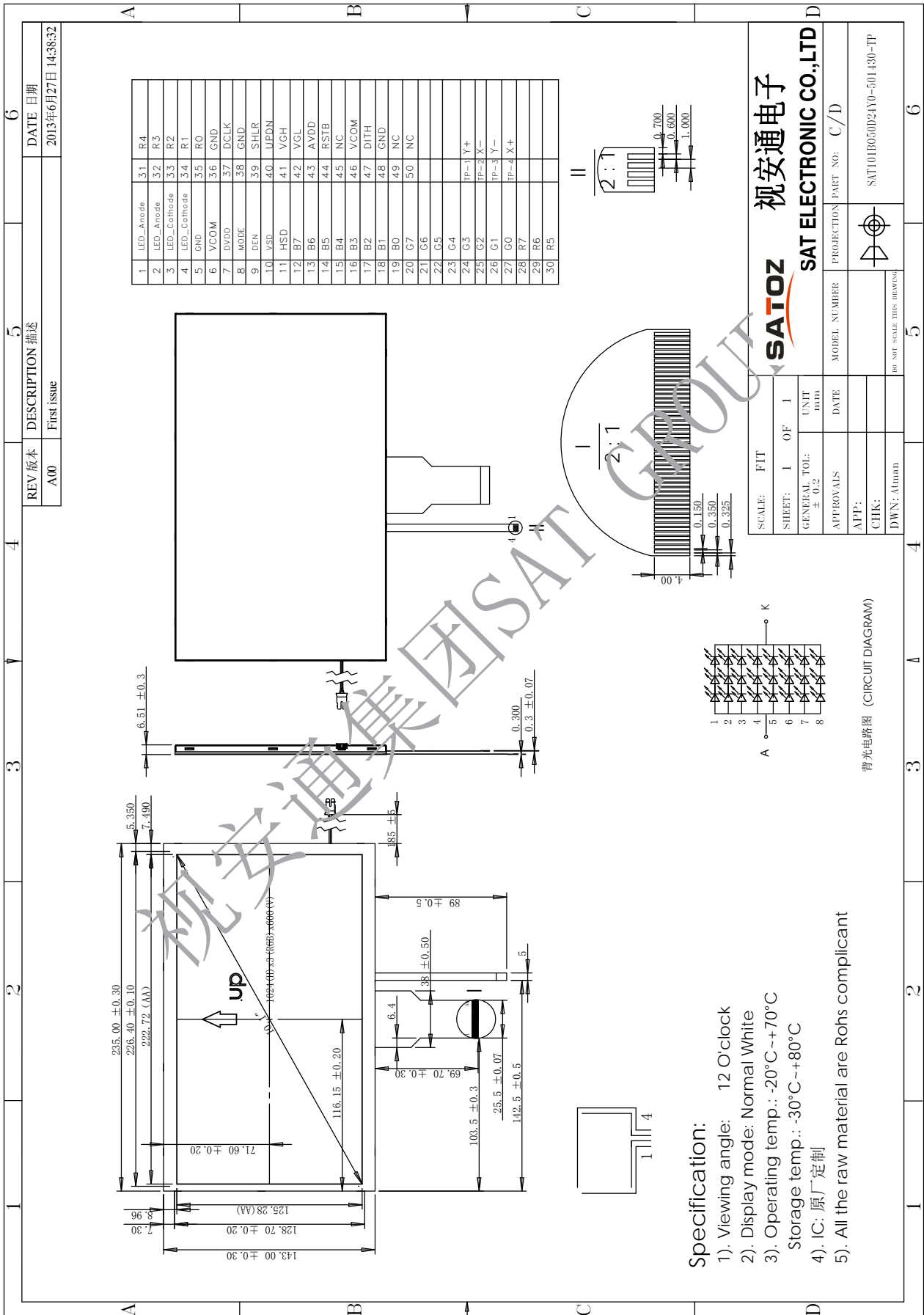
### 6.4. Storage

1. Store the module in a dark room where must keep at  $25\pm 10^{\circ}\text{C}$  and 65%RH or less.
2. Do not store the module in surroundings containing organic solvent or corrosive gas.
3. Store the module in an anti-electrostatic container or bag.

### 6.5. Cleaning

1. Do not wipe the polarizer with dry cloth. It might cause scratch.
2. Only use a soft sloth with IPA to wipe the polarizer, other chemicals might permanent damage to the polarizer.

## 7. Mechanical Drawing



## 8.Touch Panel Specification

### 8.1 Electrical Characteristics

Item	Value			Unit	Remark
	Min.	Typ.	Max.		
Lineanty	-1.5	-	+1.5	%	Afterenvinronment andlifelest
TerminalResistance	200	-	450	Ω	X(Glassside)
	500	-	900	Ω	Y(Glassside)
Insulation Resistance	20	-	-	MΩ	DC25V1min
OperatingVoltage	-	5	-	V	DC

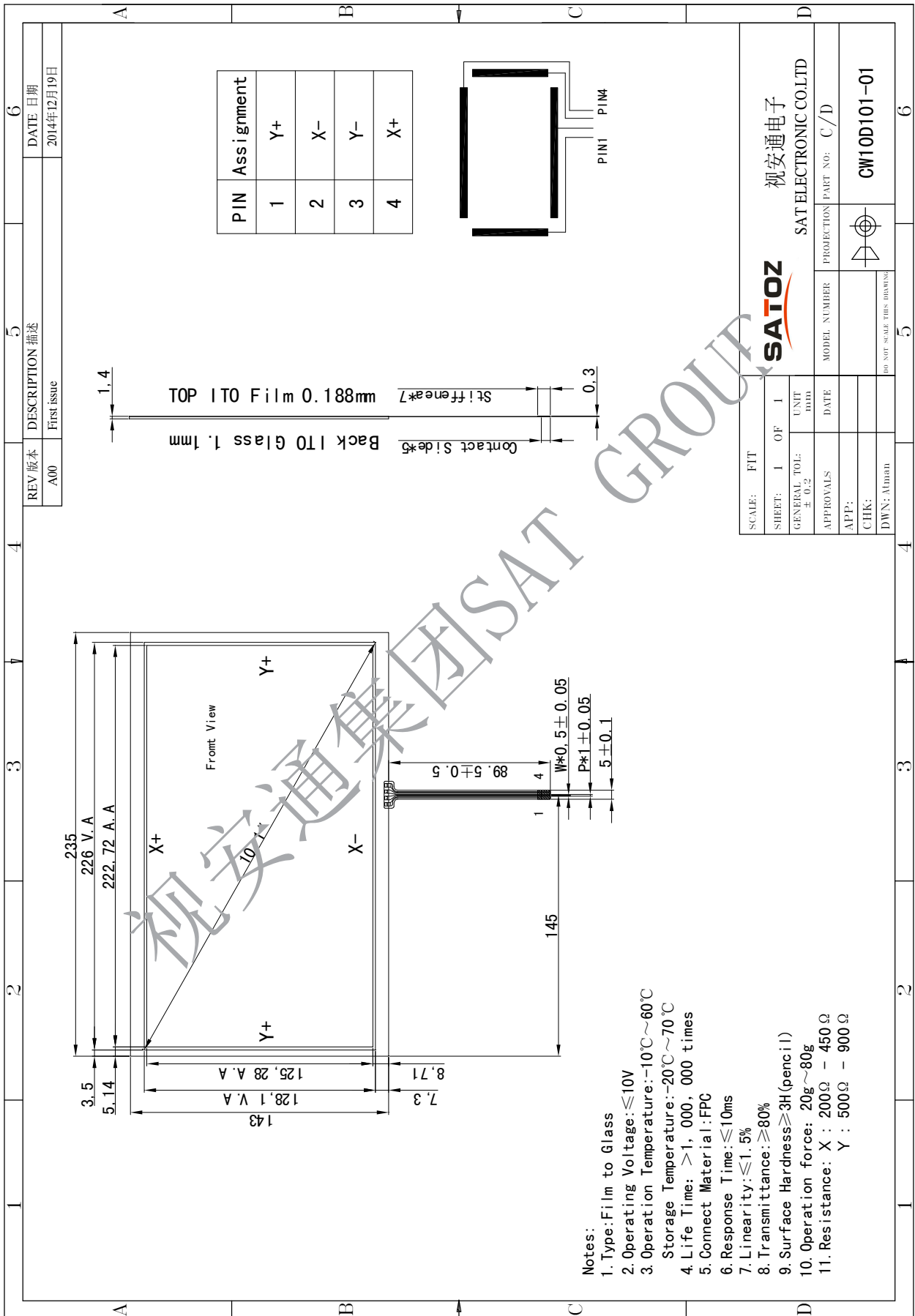
### 8.2 Optical Characteristics

Item	Value			Unit	Remark
	Min.	Typ.	Max.		
ResponseTime	-	-	10	ms	100KΩ pull-up
LightTransparency	80	-	-	%	-

### 8.3 Mechanical Characteristics

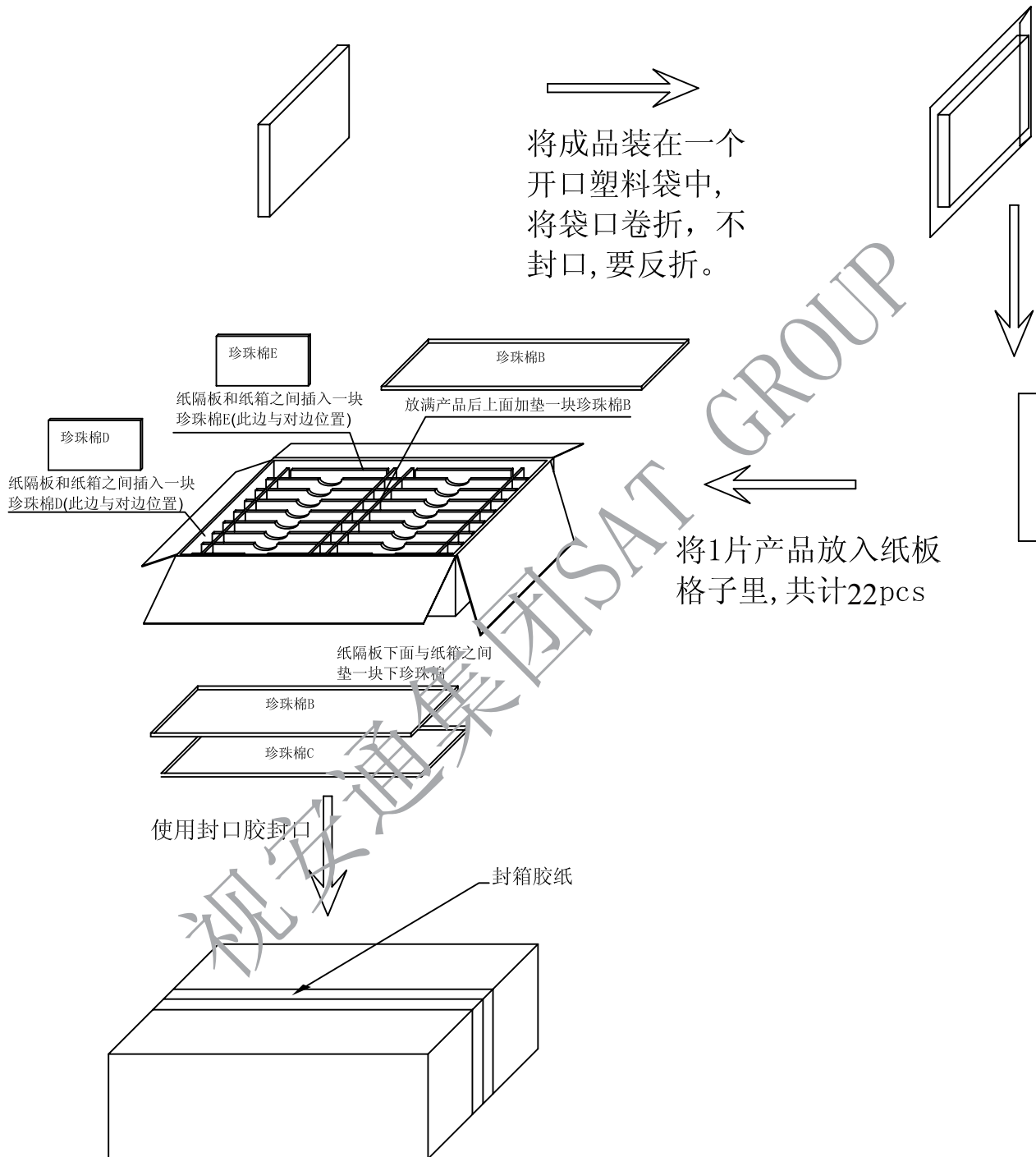
Item	Value			Unit	Remark
	Min.	Typ.	Max.		
ActiveForce	20	-	80	g	
SurfaceHardness	3	-	-	H	
PenSlidingDurability	100.000	-	-	time	
HittingDurability	1.000.000	-	-	time	

### 8.4 Mechanical Drawing



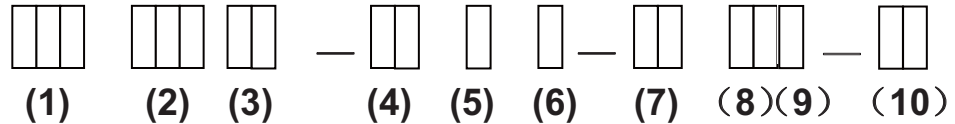


## 8. Package Drawing



## 9 . Product ID Rule

Product Name



No	Definition	Specifications
(1)	TFT LCM Productor No.	<b>SAT</b> ---- <b>SAT ELECTRONIC CO.LTD</b>
(2)	Display monitor opposite angle line size	Unit :inch or mmm (size <10 inch: takes two integers ; size >=10 inch: takes three integers )
(3)	LCD Type	AU----AUO ; CP----CPT ; PV----PVI ; TM----TIANMA ; HS----HSD ; LG----LG ; Wi----Wintek ; CM----CMO ; HY----Hydis ; HI----Hitach; Sh----Sharp ; BO---BOE ...
(4)	Interface PIN Number	By two figures characters expression from 01 to 99
(5)	Type	A---- Alternated Video Signal; D---- Data Video Signal;
(6)	LED Back Light Type	H----high light ; M---- Commonly light; L---- low light
(7)	LED Back Light colored warp	Rx----red ; Gx----green ; Bx---- blueness; Yx---- white; P----PVI; x---- warp distinction,1 minimal,9 maximal
(8)	BK Productor number	By The English litters : A 0~ Z9 A0---MeX

No	Definition	Specifications
(9)	FPC Type	S---short    L---Long
(10)	IC Type	By two figures characters expression from 01 to 99

視安通集團SAT GROUP