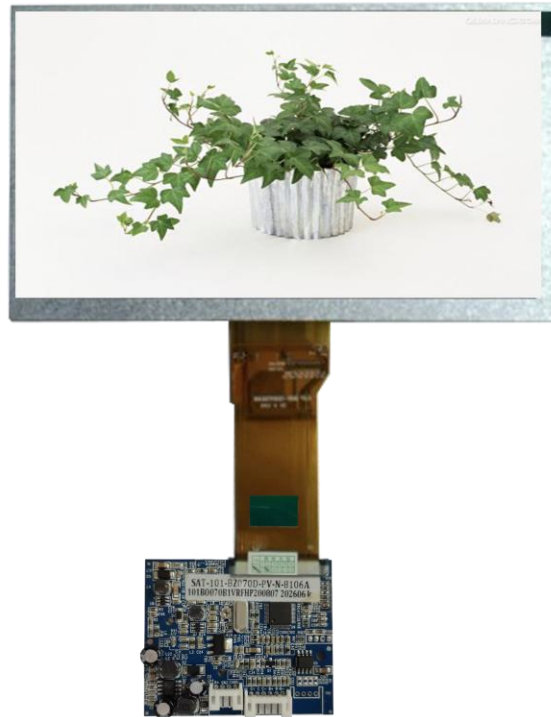

SHENZHEN SAT ELECTRONICS CO. LTD

DATE SHEET



Product		Model		Mode	
Color Display module		SAT-101-BZ070D-PV-N-8106A		PAL/NTSC (AUTO)	
USER			MANUFACTURER		
Quality	Engineering	Approved	Made	Checked	Approved
			李浩然		

Address: No.27th Building, Yulv No.6th Industrial Area , Gongming Street, Guangming New District,
Shenzhen PRC POST CODE (P.C) : 518132
Tel: (0755) 66830880 Fax: (0755) 61826182 Website: <http://www.sat-sz.com>

SHENZHEN SAT ELECTRONICS Co., Ltd.

Product Acknowledgement

Product		Module		Mode	
Color LCD Module		SAT-101-BZ070D-PV-N-8106A		PAL/NTSC(Auto)	
User			Manufacturer		
Quality	Enginee ring	Approved	Quality	Enginee ring	Approve d

Address: No.27th Building, Yulv No.6th Industrial Area , Gongming Street, Guangming New District,
Shenzhen PRC POST CODE (P.C) : 518132
Tel: (0755) 66830880 Fax: (0755) 61826182 Website: <http://www.sat-sz.com>

I. Product Description

SAT-101-BZ070D-PV-N-8106A display module is constituted by SAT-101-070-50DT-A1-ABB BOARD and SAT070B050D18B1-57100T082KN PANEL. It supports PAL and NTSC formats which can auto-identify these two formats. It used high white led to be background light which is low power consumption and less interference. Mainly applied to video door bell, video door phone, car monitor, portable DVD, instruments and measuring tool etc.

II. Main Parameter

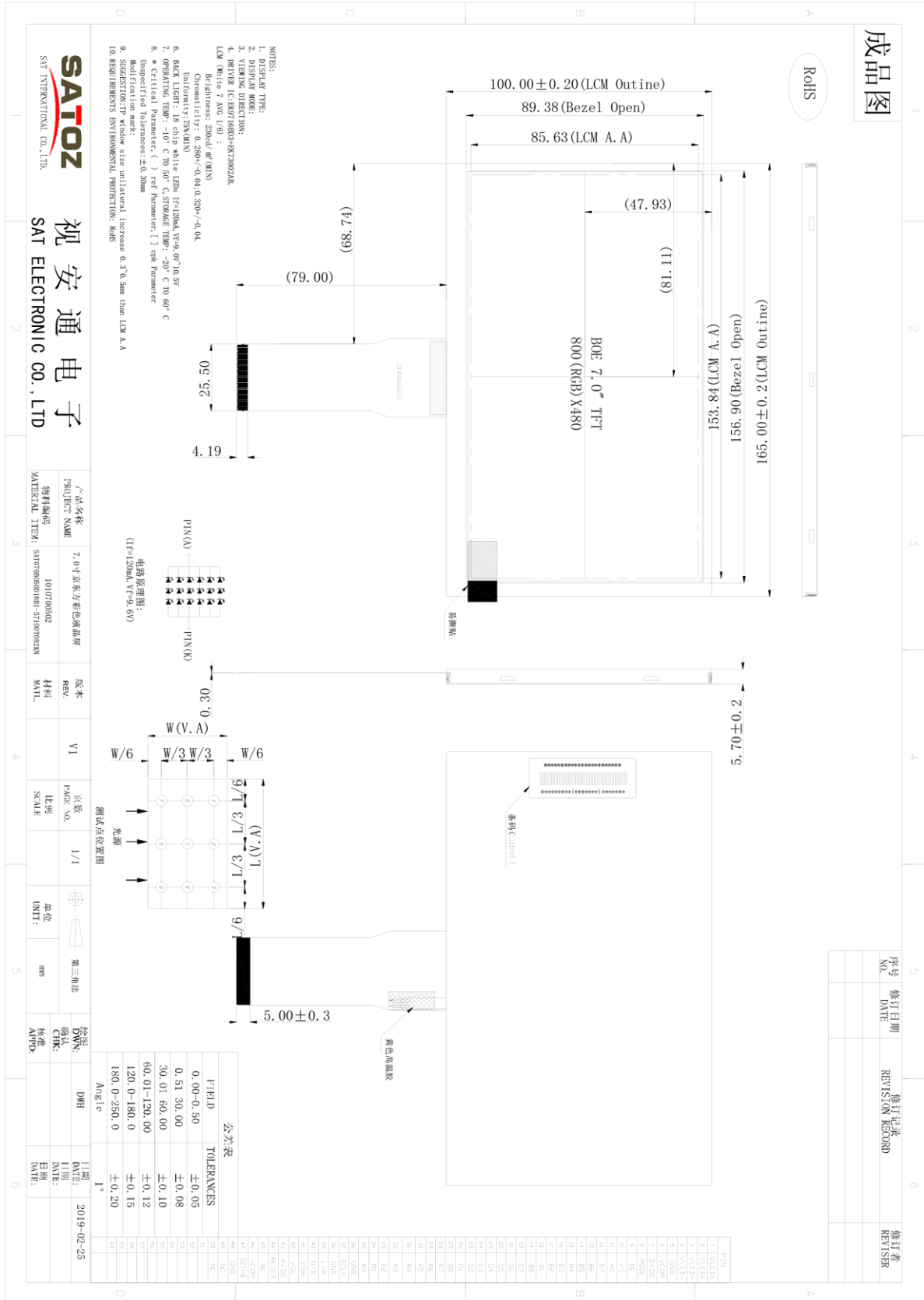
- ☆ **Resolution:** 800(H)*480(V)
- ☆ **Valid Display Area:** 153.84(W)*85.63(H) (mm)
- ☆ **Color Array:** R. G. B. Belin Array
- ☆ **Display Ratio:** 16:9
- ☆ **Backlight:** LED 背光
- ☆ **Life of backlight:** $\geq 4,0000$ Hours
- ☆ **View Angle (Up/Down/Left/Right) :** (50/70/70/70)
- ☆ **Video Input Type:** PAL/NTSC Mode(Auto Identify)
- ☆ **Video Input Amplitude:** Standard: 1.0 V_{p-p}, Min: 0.5 V_{p-p} , Max: 2.0 V_{p-p}
- ☆ **Working Voltage:** DC 9V-DC18V Standard: DC12V (deviation $<0.3V_{P-P}$) ☆ 工
作电流(DC12V 供电时): DC200mA \pm 20mA
- ☆ **Power Consumption:** 2.16W~2.64W
- ☆ **Booting Time:** 1.5-2.0S
- ☆ **Working Temperature:** -20 $^{\circ}$ C~55 $^{\circ}$ C
- ☆ **Storage Temperature:** -20 $^{\circ}$ C~60 $^{\circ}$ C

III. Product Picture

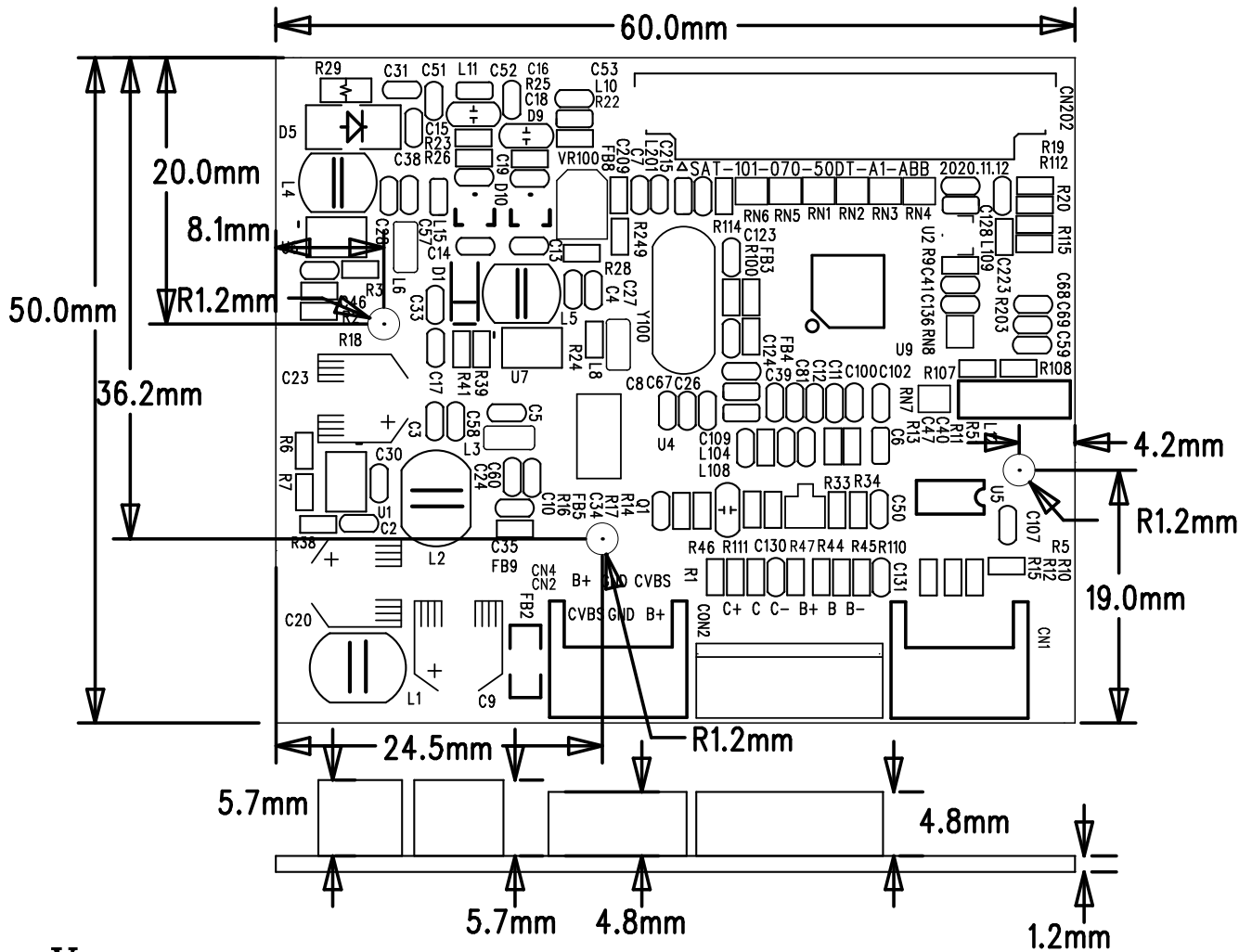


IV. 结构图

a) LCD Drawing:



b) PCBA Layout:



V. Pin Definition:

CN4 4 wire outlet (PH model, 2.0mm Distance) , connect by Power and Video

PIN	SYMBOL	DEFINITION
1	B+	9V~18V Power in put
2	GND	Power Ground Line
3	GND	Video Ground Line
4	CVBS	PAL/NTSC Video in put

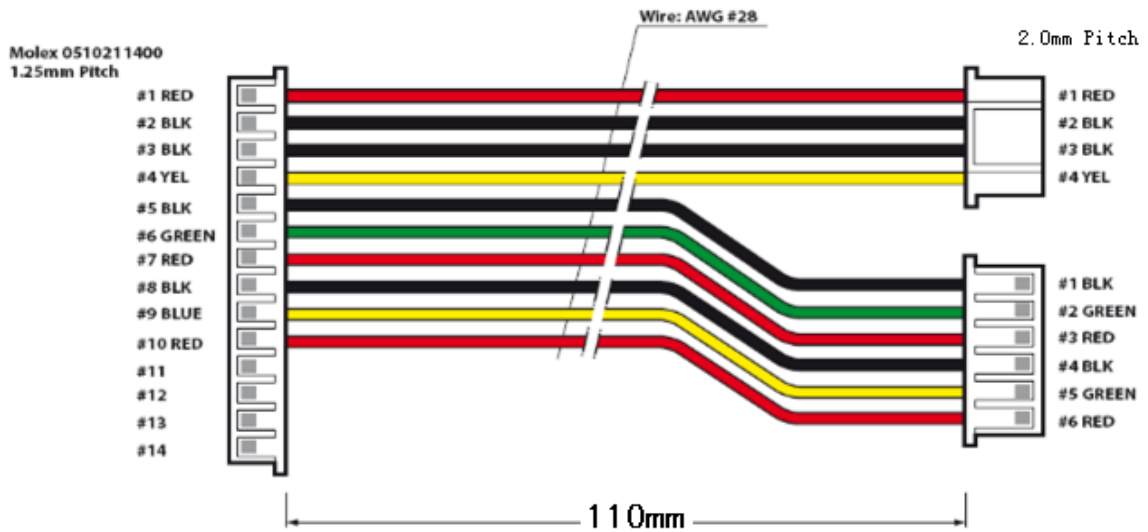
CON2 6-Wire Connector (2.0mm Distance) Key Adjustment, connect by potentiometer

PIN	SYMBOL	DEFINITION
1	C+	Chromaticity potentiometer plus
2	C	Chromaticity potentiometer
3	C-	Chromaticity potentiometer subtraction

4	B+	Brightness potentiometer plus
5	B	Brightness potentiometer
6	B-	Brightness potentiometer subtraction

VI. Standard Wire:

Specification: TFT-110-SZ/SF-14P/6P/4P-125/200-28-8106A



VII. Packing , Transport and Storage

1、Model: SAT-101-BZ070D-PV-N-8106A

2、Packing:

Single Sample Packing: 180*120*30mm

Bulk Product Package: 447 (L)*382 (W)*292 (H) mm

Quantity in One Box: 60PCS

3、Transportation and Storage:

Avoiding Clash and Humidity During Transportation ; Stored with Chemical and Liquid is Forbidden .

VIII. Notice

☆ Input Voltage no more than Maximum Value.

☆ Be cautious Glass Product

☆ This Driver Board is Electronic Product , Please wearing anti-static sets while doing the Testing

☆ LCD Panel is Connected with Driver Board by FPC, It's fragile to fall apart

IX. LCD Inspection Standard:

1、Inspection Instruction:

Observing Distance: 35CM±5CM;

Viewing Angle: Observing Angle: ±5° ; Appearance Viewing Angle: ±45°

2、Environment:

Temperature: 23 度±5 度;

Humidity: 45%~65%;

Luminance: 600LUX, With Light: 300-500LUX。

3、Inspection Instruction:

Scratch: In Condition of 600LUX, Observe at the 30cm (or Left and Right 45°), no cratch , no dirty dot etc .

Black Spot: Compare (Put) Testing the Black spot by compare with Standard

4、Inspection Tolerance

Bad Pixel (mm)		Acceptance	
		A Area	B Area
Black Dot	$d \leq 0.2$	Acceptable	Acceptable
	$0.2 < d \leq 0.3$	4	4
	$0.3 < d \leq 0.5$	2	3
	$0.5d > 0.8$	0	2
White Dot Bad Pixel	$d \leq 0.2$	Acceptable	Acceptable
	$0.2 < d \leq 0.3$	3	3
	$0.3 < d \leq 0.5$	1	2
	$0.5d > 0.8$	0	1

Notice: 1.Size: Diameter= (Max Diameter+Min Diameter) /2

2.Total Black、White、Bad Pixel: A+B Area≤4 Spot

5、LCD Display Area

