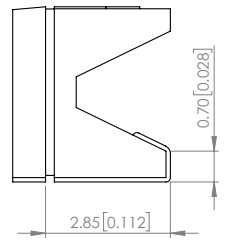
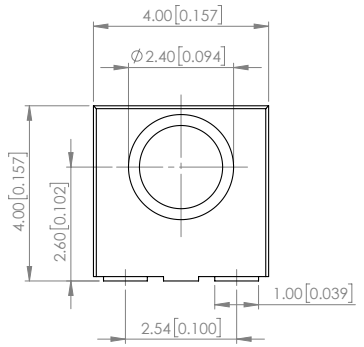
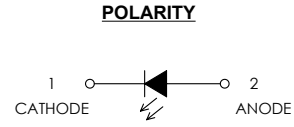
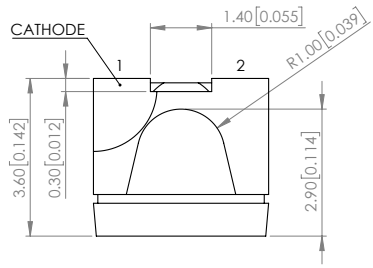
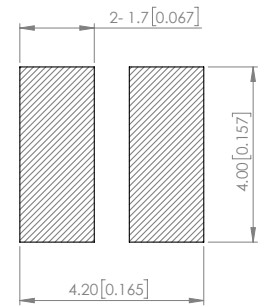


|                    |  |                |             |   |
|--------------------|--|----------------|-------------|---|
| <b>PART NUMBER</b> |  | SML-LXR44GC-TR | <b>REV</b>  | B |
| <b>REV</b>         | <b>E.C.N. NUMBER AND REVISION COMMENTS</b> |                | <b>DATE</b> |   |
| A                  | E.C.N. #10849.                             |                | 04.01.02    |   |
| B                  | ECN-Lumex201700094                         |                | 10.24.17    |   |



**RECOMMENDED SOLDER PAD LAYOUT**



**ELECTRO-OPTICAL CHARACTERISTIC TA=25°C**

| PARAMETER          | MIN         | TYP | MAX | UNITS        | TEST COND |
|--------------------|-------------|-----|-----|--------------|-----------|
| PEAK WAVELENGTH    | -           | 565 | -   | nm           | If=20mA   |
| FORWARD VOLTAGE    | -           | 2.2 | 2.5 | Vf           | If=20mA   |
| REVERSE VOLTAGE    | -           | -   | 10  | uA           | VR=5V     |
| LUMINOUS INTENSITY | -           | 30  | -   | mcd          | If=20mA   |
| VIEWING ANGLE      | -           | 120 | -   | 2x theta 1/2 | -         |
| EMITTED COLOR      | GREEN       |     |     |              |           |
| EPOXY LENS FINISH  | WATER CLEAR |     |     |              |           |

**ABSOLUTE MAXIMUM RATINGS TA=25°C**

| PARAMETER               | MAX              | UNITS |
|-------------------------|------------------|-------|
| PEAK FORWARD CURRENT*   | 140              | mA    |
| FORWARD CURRENT         | 25               | mA    |
| REVERSE VOLTAGE         | 5                | V     |
| POWER DISSIPATION       | 62.5             | mW    |
| STORAGE TEMPERATURE     | -40 TO +85       | °C    |
| OPERATING TEMPERATURE   | -40 TO +85       | °C    |
| SOLDERING TEMPERATURE** | 3 SEC. MAX @ 260 | °C    |

\*t<10us  
\*\*2.0mm FROM BODY.

**NOTE:**  
1. RoHS COMPLIANT.  
2. PACKAGE : 500 PCS / REEL

**MOISTURE SENSITIVE DEVICE  
PER JEDEC LEVEL 4 STANDARDS**

\*UNLESS OTHERWISE SPECIFIED TOLERANCES PER DECIMAL PRECISION ARE: X=±1 (±0.039), X.X=±0.5 (±0.020), X.XX=±0.25 (±0.010), X.XXX=±0.127 (±0.005). LEAD SIZE=±0.05 (±0.002), LEAD LENGTH=±0.75 (±0.030), MIN.=<sup>0.00</sup>DECIMAL PRECISION, MAX.=<sup>0.00</sup>DECIMAL PRECISION

**LUMEX**  
Creating LED and LCD Solutions Together™

425 N. GARY AVE.  
CAROL STREAM, IL 60188  
PHONE : 800-278-5666  
FAX : 630-315-2150  
WEB : WWW.LUMEX.COM

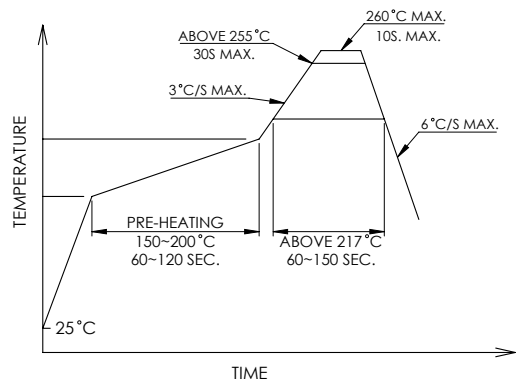
4(L)\*4(W)\*3.6(H)mm, RIGHT ANGLE BOOMERANG SURFACE MOUNT LED, 565nm GREEN LED, WATER CLEAR LENS.

\*\*THE SPECIFICATIONS MAY CHANGE AT ANY TIME WITHOUT NOTICE DUE TO NEW MATERIALS OR PRODUCT IMPROVEMENT.\*\*

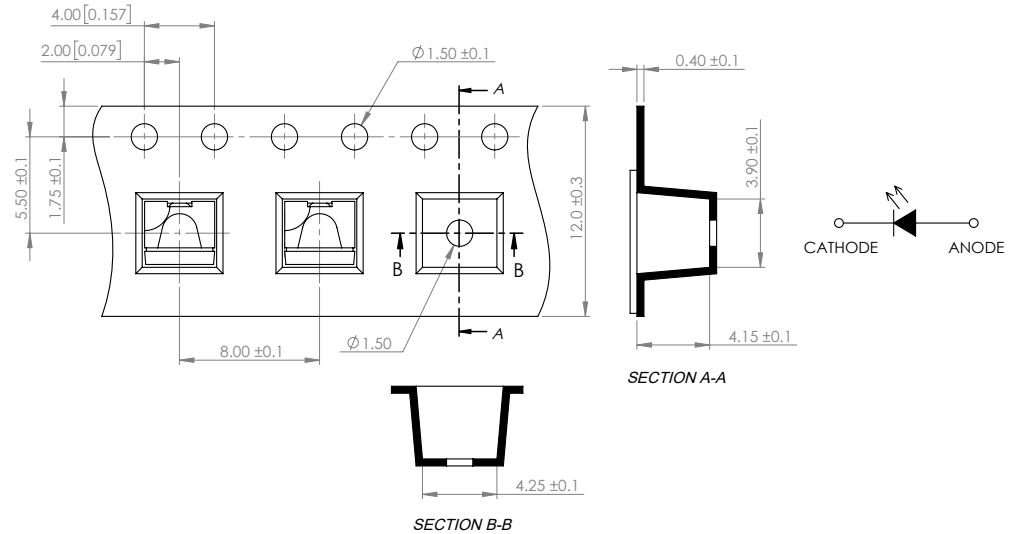
CONFIDENTIAL INFORMATION  
THE INFORMATION CONTAINED IN THIS DOCUMENT IS THE PROPERTY OF LUMEX INC. EXCEPT AS SPECIFICALLY AUTHORIZED IN WRITING BY LUMEX INC., THE HOLDER OF THIS DOCUMENT SHALL KEEP ALL INFORMATION CONTAINED HEREIN CONFIDENTIAL AND SHALL PROTECT SAME IN WHOLE OR IN PART FROM DISCLOSURE AND DISSEMINATION TO ALL THIRD PARTIES.

|                   |                 |
|-------------------|-----------------|
| DATE : 2017.10.24 | DRAWN BY : C.C. |
| PAGE : 1 OF 2     | CHKD BY : G.Y.  |
| SCALE : NTF       | APRVD BY : E.C. |
| UNIT : mm [INCH]  | ☒               |

PROFILE



CARRIER TAPE DIMENSION



\*UNLESS OTHERWISE SPECIFIED TOLERANCES PER DECIMAL PRECISION ARE: X=±1 (±0.039), X.X=±0.5 (±0.020), X.XX=±0.25 (±0.010), X.XXX=±0.127 (±0.005). LEAD SIZE=±0.05 (±0.002), LEAD LENGTH=±0.75 (±0.030), MIN= <sup>DECIMAL PRECISION</sup> 0.00, MAX.= <sup>DECIMAL PRECISION</sup> 0.00



425 N. GARY AVE.  
 CAROL STREAM, IL 60188  
 PHONE : 800-278-5666  
 FAX : 630-315-2150  
 WEB : WWW.LUMEX.COM

4(L)\*4(W)\*3.6(H)mm, RIGHT ANGLE BOOMERANG SURFACE MOUNT LED, 565nm GREEN LED, WATER CLEAR LENS.

\*\*THE SPECIFICATIONS MAY CHANGE AT ANY TIME WITHOUT NOTICE DUE TO NEW MATERIALS OR PRODUCT IMPROVEMENT.\*\*

CONFIDENTIAL INFORMATION  
 THE INFORMATION CONTAINED IN THIS DOCUMENT IS THE PROPERTY OF LUMEX INC. EXCEPT AS SPECIFICALLY AUTHORIZED IN WRITING BY LUMEX INC., THE HOLDER OF THIS DOCUMENT SHALL KEEP ALL INFORMATION CONTAINED HEREIN CONFIDENTIAL AND SHALL PROTECT SAME IN WHOLE OR IN PART FROM DISCLOSURE AND DISSEMINATION TO ALL THIRD PARTIES.

|                   |                 |
|-------------------|-----------------|
| DATE : 2017.10.24 | DRAWN BY : C.C. |
| PAGE : 2 OF 2     | CHKD BY : G.Y.  |
| SCALE : NTF       | APRVD BY : E.C. |
| UNIT : mm [INCH]  | Ⓢ               |