

## GSM Module

# MG2810

For M2M Applications



LGA Form Factor



Easy to integrate



Ultra Compact



Embedded FTP Stack



Quad-band



-40°C to +85°C



Embedded TCP/UDP Stack



UART



BT



AT Command



I2C

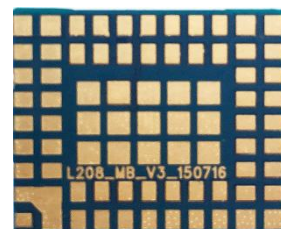


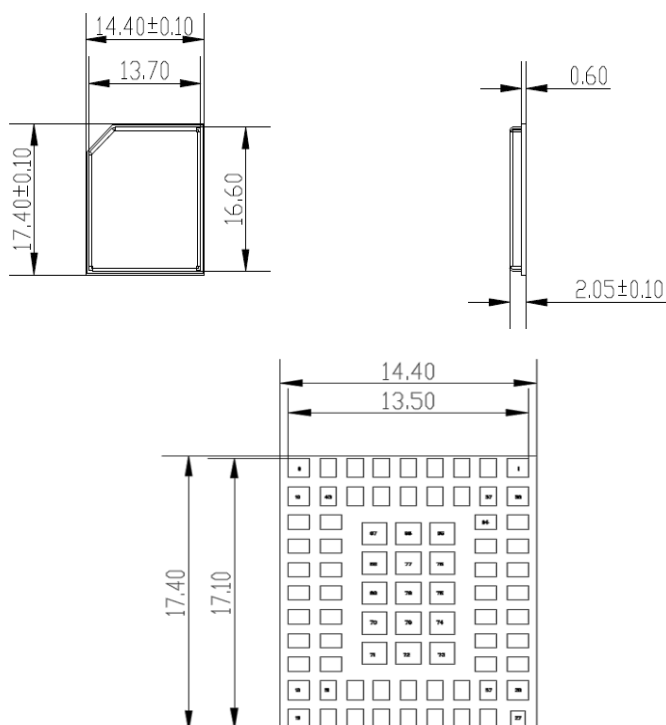
Analog Voice

**MG2810** is a GSM/GPRS module with LGA interface, and support GSM850/900/1800/1900MHz for globe market.

The module is very small, the dimension is 17.4\*14.4\*2.05 mm. Its super performance and compact design make it is suitable for design requirements of various products.

Through its 79 pin pads and widely applied interfaces can support voice, SMS, and data function.





## General Features

- ❑ LGA Form Factor (79pin)
- ❑ Dimensions: 17.4 mm × 14.4 mm × 2.05mm
- ❑ Weight: approx. 1grams
- ❑ Frequency Band:
  - GSM 850/ 900/1800/1900
- ❑ Bluetooth

## Electrical & Sensitivity

- ❑ Transmit Power:
  - GSM850/GSM900: 33 ± 2dBm (Class 4)
  - DCS1800/PCS1900: 30 ± 2dBm(Class 1)
- ❑ Receiving sensitivity:
  - GSM850/GSM900: -108dBm
  - DCS1800/PCS1900: -108dBm
- ❑ Power Supply :
  - 3.4V~ 4.2V (3.8V is recommended)
- ❑ Power Consumption:
  - Off mode: 70uA (Typical)
  - Sleep mode : 2.0 mA (Typical)
  - Idle mode: 10.6mA (Typical)
  - Peak current : 2A (Max. TX power)

## Voice

- ❑ Half rate (HR)
- ❑ Full rate (FR)
- ❑ Text and PDU
- ❑ Enhanced full rate (EFR)
- ❑ Auto-negotiation multi-code rate (AMR)

## Data Features

- ❑ GPRS
  - Uplink 42.8kbps / Downlink 85.6kbps
  - GPRS Multi-slot Class 10
  - GPRS Mobile Station Class B

## SMS Features

- ❑ Point to point MO and MT
- ❑ SMS status report
- ❑ Text and PDU

## Interfaces

- ❑ 2 analog voice channels
- ❑ 2 UARTs
- ❑ 1 SIM interface (3V/ 1.8V)
- ❑ I2C
- ❑ ADC
- ❑ GPIO
- ❑ RF antenna
- ❑ BT antenna

## Software Features

- ❑ Support embedded TCP & UDP protocols
- ❑ Support embedded FTP protocols
- ❑ Control Via AT Commands
- ❑ DTMF
- ❑ SMS

## Driver & Tools

- ❑ Diag-log Tool for Windows
- ❑ Firmware Update Tool

## Environmental

- ❑ Working temperature: -40~+85°C
- ❑ Storage temperature: -40 ~+85 °C
- ❑ Humidity: 5% ~ 95%

## Approvals & Certifications

- ❑ CE
  - ❑ Rohs
- \* Stands for Optional.