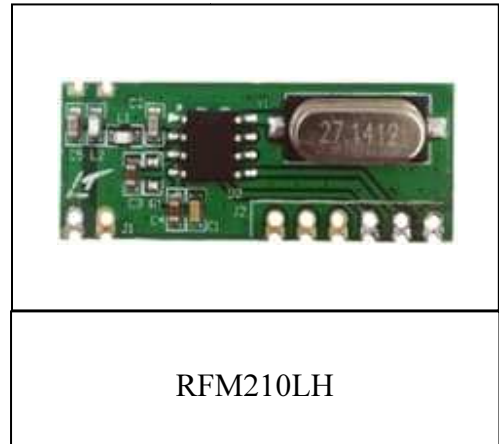

RFM210LH ASK/OOK Wireless Receiver Module

1. Brief introduction

RFM210LH is a ASK/OOK wireless data Receiver , ultra low power consumption, high sensitivity, long distance communication, cost-effective RF receiver module, suitable for ISM band wireless applications.

It has the characteristics of good anti-interference and high reliability, and it can not affect the working distance even in the situation of complex interference environment.

The Module is provided by frequency 315MHz and 433.92MHz, both support 1~5kbps data rate.



RFM210LH

2. Features

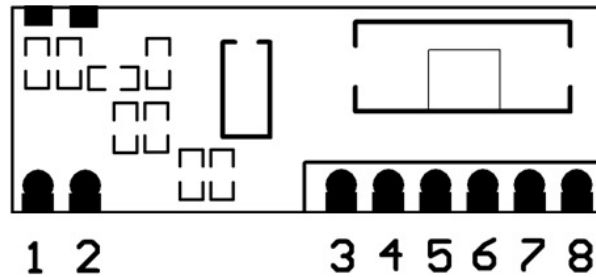
- Comply with FCC and ETSI
- Strong anti-interference ability, suitable for complex interference environment
- Receiving Sensibility: -109dBm
- Working Frequency: 315MHz,433.92MHz
- Supply Voltage Range: 3.0V-5.5V
- Working Current: 4.5mA
- Sleeping Current: ≤1uA
- Data Rate: 1-5 kbps
- Receiver bandwidth:330kHz

3. Application

- Remote Entrance Guard
- Battery Car Security System
- Remote Socket
- Remote Doorbell
- Wireless Data Transmission
- Wireless Lighting Control
- Remote Control Toys
- Remote Control Home Appliances
- Wireless Alarming & Security System

4.Pins out

RFM210LH



| Pin | Name | Function |
|-----|------|----------------|
| 1 | ANT | Antenna Input |
| 2 | GND | Ground |
| 3 | NC | NC |
| 4 | NC | NC |
| 5 | NC | NC |
| 6 | VCC | Positive power |
| 7 | DATA | Data Output |
| 8 | GND | Ground |

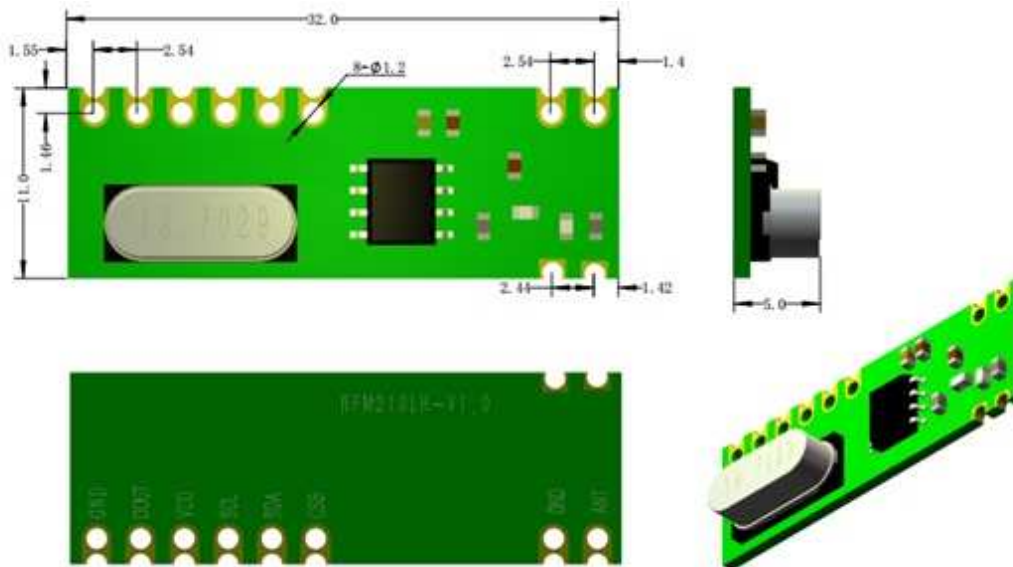
5. Electrical Specifications

Testing Conditions: DC 5V / 25°C

| Parameter | Label | Status | MIN. | Typical Value | MAX. | Unit |
|---------------------|-----------------|----------------------|---------|---------------|------|------|
| Frequency Range | Fc | Model: RFM210LH-315D | | 315 | | MHz |
| | | Model: RFM210LH-433D | | 433.92 | | MHz |
| Modulation | | | ASK/OOK | | | |
| Sensibility | | 1 Kbps | | -109 | | dBm |
| Data Rate | DR | | 1 | | 5 | Kbps |
| Receiver Bandwidth | | | | 330 | | KHz |
| Supply Voltage | | | 3.0 | | 5.5 | V |
| Working Current | I _{dd} | 433.92MHz | | 4.5 | | mA |
| Sleeping Current | | | | | 1 | uA |
| Image Rejection | IMR | | | 30 | | dB |
| Working Temperature | | | -40 | | +85 | °C |

6. Dimensions Diagram

RFM210LH



Unit: mm

7. Order information

| Module | Frequency | Voltage |
|----------------|-----------|----------|
| RFM210LH-315S1 | 315MHz | 3.0-5.5V |
| RFM210LH-433S1 | 433.92MHz | 3.0-5.5V |

HOPE MICROELECTRONICS CO.,LTD

Add:2/F,Building3,pingshan Private Enterprise science and Technology Park,xili Town,Nanshan District,

Tel: 86-755-82973805

Fax: 86-755-82973550

Email: sales@hoperf.com

Website: <http://www.hoperf.com>

<http://www.hoperf.cn>

This document may contain preliminary information and is subject to change by Hope Microelectronics without notice. Hope Microelectronics assumes no responsibility or liability for any use of the information contained herein. Nothing in this document shall operate as an express or implied license or indemnity under the intellectual property rights of Hope Microelectronics or third parties.

The products described in this document are not intended for use in implantation or other direct life support applications where malfunction may result in the direct physical harm or injury to persons. NO WARRANTIES OF ANY KIND, INCLUDING, BUT NOT LIMITED TO, THE IMPLIED WARRANTIES OF MECHANABILITY OR FITNESS FOR A PARTICULAR PURPOSE, ARE OFFERED IN THIS DOCUMENT.

©2006, HOPE MICROELECTRONICS CO.,LTD. All rights reserved.