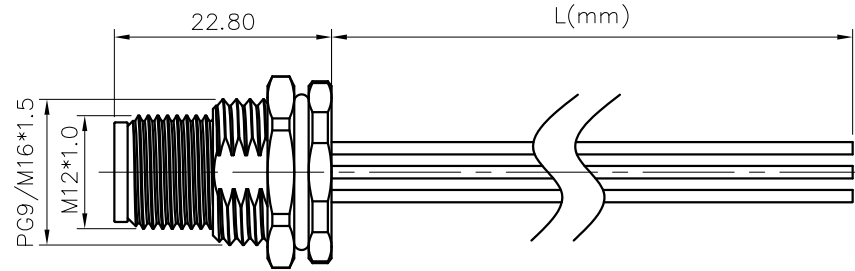
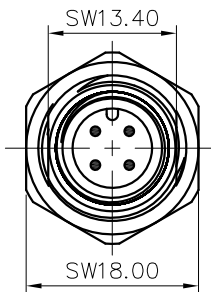
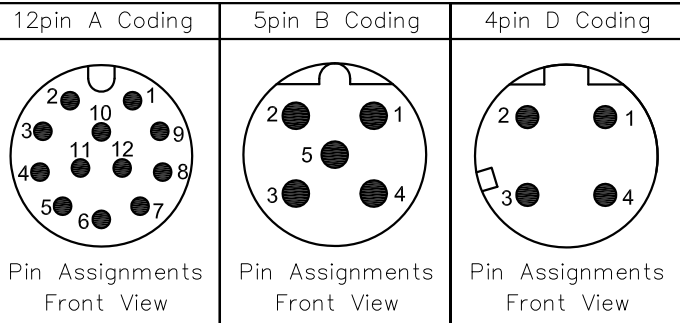


REVISION RECORD

REV	ECN	DESCRIPTION	DRFT	DATE
-----	-----	-------------	------	------

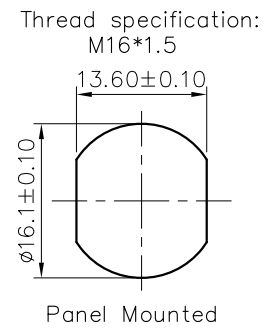
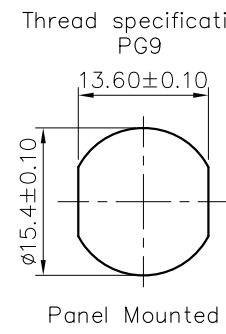


Pin	Wire Color	Pin	Wire Color	Pin	Wire Color
12	Red/Blue				
11	Grey/Pink				
10	Violet				
9	Red				
8	Grey				
7	Black				
6	Yellow				
5	Pink	5	Grey		
4	Green	4	Black	4	Black
3	White	3	Blue	3	Blue
2	Blue	2	White	2	White
1	Brown	1	Brown	1	Brown
Pin	Wire Color	Pin	Wire Color	Pin	Wire Color
Pin Out		Pin Out		Pin Out	

3pin A Coding	4pin A Coding	5pin A Coding	8pin A Coding		
Pin Assignments Front View	Pin Assignments Front View	Pin Assignments Front View	Pin Assignments Front View		
			8 Red		
			7 Blue		
			6 Pink		
		5 Grey	5 Grey		
4 Black	4 Black	4 Black	4 Yellow		
3 Blue	3 Blue	3 Blue	3 Green		
1 Brown	2 White	2 White	2 Brown		
1 Brown	1 Brown	1 Brown	1 White		
Pin	Wire Color	Pin	Wire Color	Pin	Wire Color
Pin Out		Pin Out		Pin Out	

SS-M12X-XXP-MM-SF7XXX-00B(H)  
 Coding: A,B,D  
 Pin number: 03,04,05, 06,08,10,12  
 Thread specification:  
 A: PG9;  
 B: M16\*1.5  
 XX: 150~1500mm  
 15: 150±15mm  
 30: 300±20mm  
 50: 500±20mm  
 A0: 1000±40mm  
 A5: 1500±40mm  
 Wire Length L: 150~1500mm

- NOTES:
- Rated voltage/current : 3pin A: 250V / 4A  
4pin A: 250V / 4A  
5pin A: 60V / 4A  
8pin A: 30V / 2A  
12pin A: 30V / 1.5A  
5pin B: 60V / 4A  
4pin D: 250V / 4A
  - Withstanding voltage : 3,4pin: AC1500V/1Min  
5pin: AC1120V/1Min  
6,8pin: AC500V/1Min
  - Levels of protection: IP67
  - Cable specifications :  
3pin A: 22AWG/0.34mm<sup>2</sup>  
4pin A/D: 22AWG/0.34mm<sup>2</sup>  
5pin A/B: 22AWG/0.34mm<sup>2</sup>  
6pin A: 24AWG/0.25mm<sup>2</sup>  
8pin A: 24AWG/0.25mm<sup>2</sup>  
12pin A: 26AWG/0.14mm<sup>2</sup>
  - Wire connection mode: soldering
  - Operating temperature: -25°C~+85°C
  - For Panel Thickness Max: 4.5mm
  - RoHS Compliance



DETACHED LISTS	PART NO.: SSM12XXXPMMSF7XXX00BH	宁波高松电子有限公司 NINGBO DEGSON ELECTRICAL CO., LTD		
	APPD:	NAME: SS-M12X-XXP-MM-SF7XXX-00B(H)		
	CHKD:	TITLE: CUSTOMER DRAWING		
	DRFT: LZ 2018.10.08	REV: D0-1	SHEET: 1/2	
THIRD ANGLE PROJECTION		DRAWING NO.: XXXXXXXX-XX-CXX	SCALE: 1:1	DO NOT SCALE DRAWING