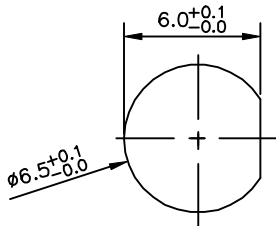
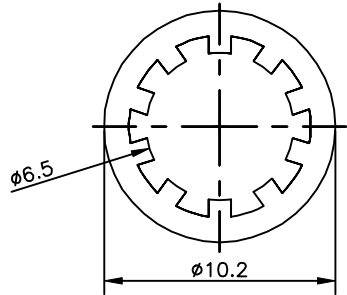
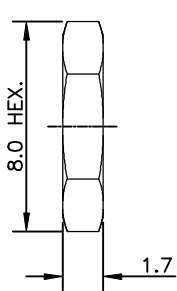


PROPOSAL DRAWING



RECOMMENDED MOUNTING HOLE
MAX. PANEL THICKNESS : 2.8 MM

| LENGTH & TOLERANCE | PART NUMBER |
|--------------------|-----------------|
| 100.0 ±2.0 | ARC94A11M-0100C |
| 150.0 ±2.0 | ARC94A11M-0150C |
| 200.0 ±2.0 | ARC94A11M-0200C |
| 250.0 ±2.0 | ARC94A11M-0250C |
| 300.0 ±2.0 | ARC94A11M-0300C |

| REV. | DESCRIPTION | ECN NO. | NAME | CHECK | DATE |
|------|---------------|---------|------|-------|------------|
| 1 | PROPOSAL ONLY | --- | KEN | | 2020/10/22 |

REVISIONS

| | | | |
|---|----------------------------|--------------------|--|
| QUALITY SYMBOLS MAJOR Ⓢ CRITICAL Ⓢ | DRAWN BY Ken Kan | DATE 2020/10/22 | |
| | CHECKED BY | DATE | |
| GENERAL TOLERANCES (UNLESS SPECIFIED) 0.5 - 6 = ±0.1 6 - 30 = ±0.2 30 - 120 = ±0.3 120-315 = ±0.5 315-1000 = ±0.8 1000-2000 = ±1.2 | APPROVED BY | DATE | TITLE KS CONNECTOR TO SMA ST. JACK FOR Ø1.13 SINGLE BRAIDED BLACK CABLE |
| UNITS mm | | SIZE A4 | REF. NO. |
| SCALE 3:1 | SHEET NO. 1 OF 2 | REV 1 | DWG NO. C-ARC94A11M-xxxxC |

NOTES :

1. MATERIAL

- 1.1 SMA CONNECTOR
 - 1.1.1 BODY, FERRULE, LOCK WASHER, NUT : BRASS
 - 1.1.2 INSULATOR : PTFE
 - 1.1.3 CONTACT : BeCu
- 1.2 KS CONNECTOR
 - 1.2.1 HOUSING : P.BRONZE
 - 1.2.2 INSULATOR : PA66 UL94V-0
 - 1.2.3 CONTACT : P.BRONZE
- 1.3 OTHER
 - 1.3.1 Ø1.13 SINGLE BRAIDED CABLE : FEP (JACKET)
 - 1.3.2 HEAT SHRINK TUBE : PE
 - 1.3.3 PROTECTION TUBE : PE

2. FINISH

- 2.1 SMA CONNECTOR
 - 2.1.1 BODY, FERRULE, LOCK WASHER, NUT, CONTACT : GOLD 3u" OVER NICKEL
 - 2.1.2 INSULATOR : WHITE
- 2.2 KS CONNECTOR
 - 2.2.1 HOUSING : GOLD FLASH OVER NICKEL
 - 2.2.2 INSULATOR : BLACK
 - 2.2.3 CONTACT : GOLD 3u" OVER NICKEL
- 2.3 OTHER
 - 2.3.1 Ø1.13 SINGLE BRAIDED CABLE : BLACK
 - 2.3.2 HEAT SHRINK TUBE : BLACK
 - 2.3.3 PROTECTION TUBE : TRANSPARENT

3. ELECTRICAL PERFORMANCE


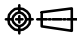
- 3.1 IMPEDANCE : 50 Ω
- 3.2 FREQUENCY RANGE : 0~6.0 GHz
- 3.3 VOLTAGE RATING : AC60V MAXIMUM
- 3.4 INSULATION RESISTANCE : 500 MEGOHMS MINIMUM
- 3.5 DIELECTRIC WITHSTANDING VOLTAGE : 200V AC IN 1-MINUTE

4. OTHERS

- 4.1 THIS COMPONENT AND ITS HOMOGENEOUS SUB COMPONENTS ARE RoHS COMPLIANT

| REV. | DESCRIPTION | ECN NO. | NAME | CHECK | DATE |
|------|---------------|---------|------|-------|------------|
| 1 | PROPOSAL ONLY | --- | KEN | | 2020/10/22 |

REVISIONS

| | | | | | |
|---|--|---|--|---|--|
| QUALITY SYMBOLS MAJOR Ⓢ CRITICAL Ⓢ | | DRAWN BY Ken Kan 2020/10/22 DATE | |  | |
| GENERAL TOLERANCES (UNLESS SPECIFIED) 0.5 - 6 = ±0.1 6 - 30 = ±0.2 30 - 120 = ±0.3 120-315 = ±0.6 315-1000 = ±0.8 1000-2000 = ±1.2 | | CHECKED BY DATE | | | |
| | | APPROVED BY DATE | | TITLE KS CONNECTOR TO SMA ST. JACK FOR Ø1.13 SINGLE BRAIDED BLACK CABLE | |
| UNITS mm | |  | | SIZE A4 | |
| SCALE 3:1 | | SHEET NO. 2 OF 2 | | REV 1 | |
| | | | | REF. NO. | |
| | | | | DWG. NO. C-ARC94A11M-xxxxC | |