

Stereo Jack Series

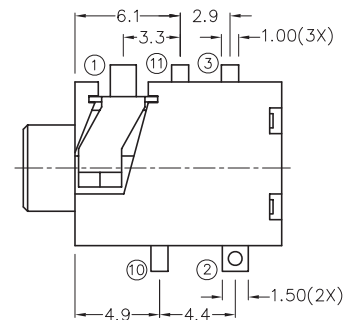
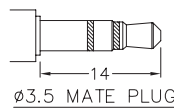
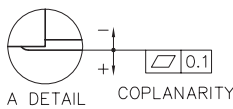
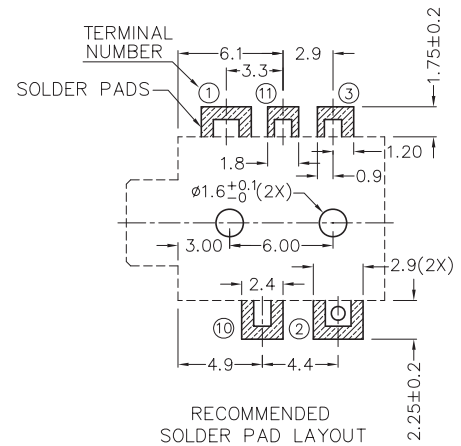
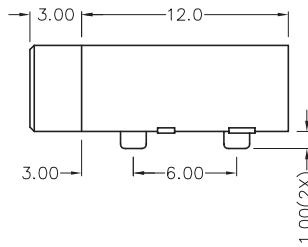
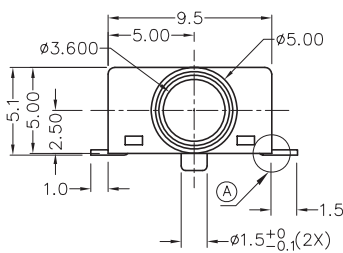
KLS1-TPJ3.5-001 (SMD Stereo Jack)

Technical parameters:

Rated voltage: DC 30 V
 Rated current: 0.5 A
 Contact resistance: 0.03Ω, max
 Insulation resistance: 100MΩ, min
 Pressure: AC500V (50Hz) / 1minute
 Insertion Force :2-20 N
 Life: 50000 times
 Operating Temperature:-30°C ~ 70°C

Material:

- Terminal 1 : Copper Alloy
- Terminal 2 : Copper Alloy
- Terminal 3 : Copper Alloy
- Terminal 10 : Brass
- Terminal 11 : Brass
- Housing : Pa66
- Cover : Pa66



MODEL NO.	KLS1-TPJ3.5-001	KLS1-TPJ3.5-001A	KLS1-TPJ3.5-001B	KLS1-TPJ3.5-001C	KLS1-TPJ3.5-001D
SCHEMATIC					

ORDER INFORMATION

Product NO.: KLS1-TPJ3.5-001A

