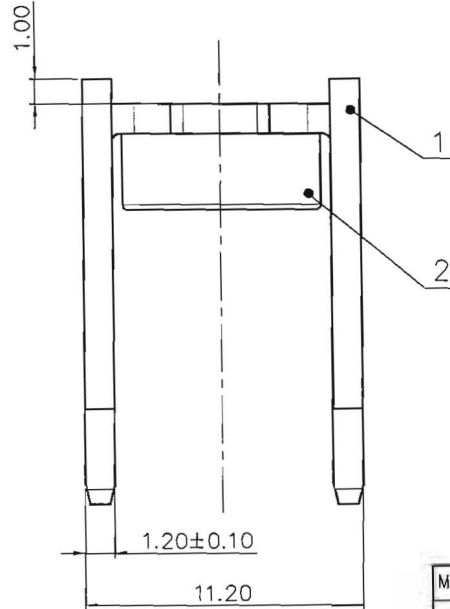
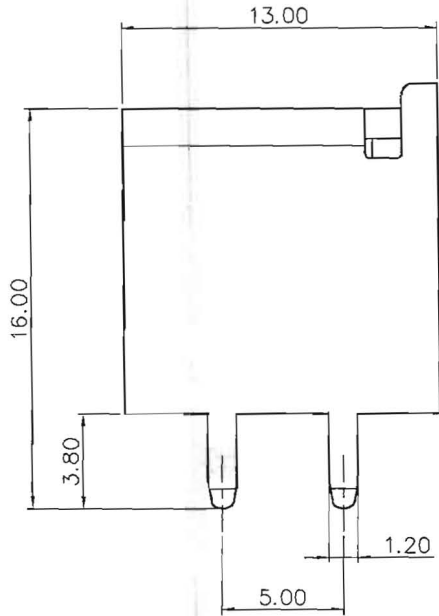


NOTES:

- Rated current : 50A
- Torque value : M4 , 21.26Lb.in(2.4N·m/24.48kgf.cm)
- Dimension shall be interpreted per ASME Y14.5-2009
- Undimensioned tolerances:

Pitch range in mm		Nominal dimension range in mm						
TO	Over	Over	Over	Over	Over	0.1/10		
6	10	10	30	60	100	<		
±0.15	±0.20	±0.30	±0.30	±0.50	±0.70	±1.00	±1.30	±2'

- RoHS Compliance



K50 - 02A (H)
 (RoHS)
 02A-(Customer Request)
 (Series No.)



2	Nut	Steel	M4/Zn Plated
1	Pin Header	Copper	Sn Plated
ITEM	NAME OF PART	MATERIAL	NOTES

MATERIAL:		SURFACE:	
MAT NO.: /		宁波高松电子有限公司 NINGBO DEGSON ELECTRICAL CO., LTD	
STATUS: /			
APPD: LamCH 2018.06.01		NAME: K50-02A(H)	
CHKD: #		DRAWING NO.: K50-C02	
DRFT: Desinly 2018.06.01		REV TO	
SIZE: A4	TYPE: CUSTOMER DRAWING	SCALE: 3:1	SHEET 1/1

REV	ECN	DESCRIPTION	DRFT	DATE