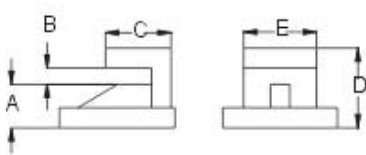
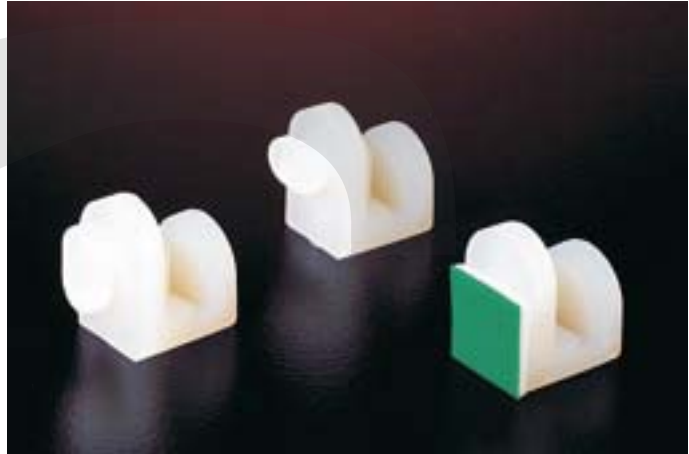


PCB Support Series

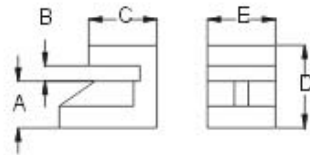
KLS8-0204 PCB Support Series

Material: UL approved Nylon 66, 94V-2
Drills holes on chassis board as shown.

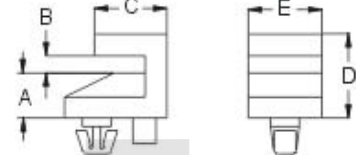
Unit:mm



ES-5A

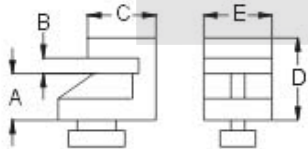


ES-6A

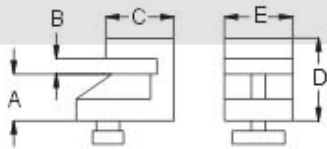


ES-6M

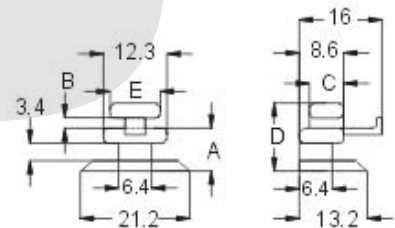
ADHESIVE TAPE



ES-6P



ES-6V



ES-8U

Item No.	A	B	C	D	E	Packing
ES-5A	5.4	2.2	5.0	10.3	9.5	100pcs
ES-6A	6.0	1.9	9.0	10.8	8.7	
ES-6M	5.8	2.2	9.3	10.7	9.5	
ES-6P	6.0	1.9	9.0	10.8	8.7	
ES-6V	6.0	1.9	9.0	10.8	8.7	
ES-8U	8.4	2.0	6.7	10.3	9.8	

ORDER INFORMATION

KLS8-0204 - ES-5A

