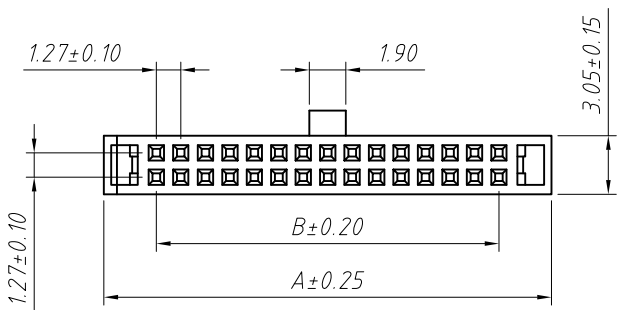
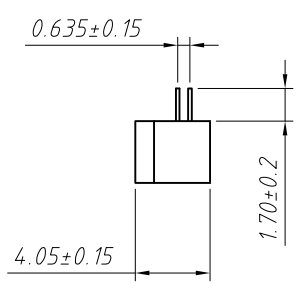
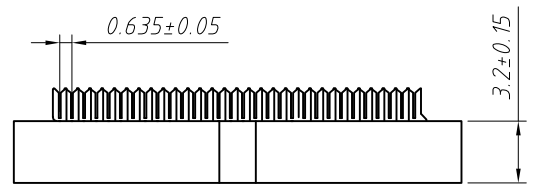
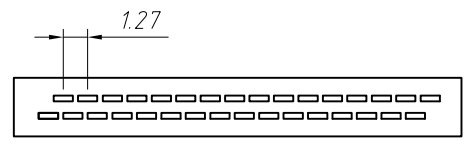
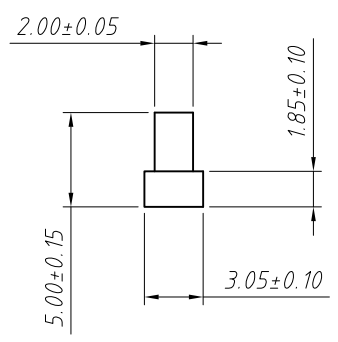
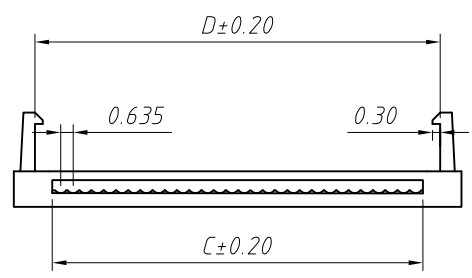


1
RoHS Compliance



Material:
Housing: PBT,UL 94V-0
Contacts: Phosphor Bronze
Plating: Au or Sn over 50u" nickel

Electrical Characteristics:
Current Rating: 1.0 AMP
Withstand Voltage: 500V AC
Insulator Resistance: 1000M Ohm min
Contact Resistance: 20m Ohm max.
Operating Temperature: -40°C ~ +105°C
Max.Processing Temp: 180°C for 30-60 seconds
(200°C for 10 seconds)

Pin	Dimension mm			
	A	B	C	D
06	8.00	2.54	4.20	5.30
08	9.27	3.81	5.47	6.57
10	10.54	5.08	6.74	7.84
12	11.81	6.35	8.01	9.11
14	13.08	7.62	9.28	10.38
16	14.35	8.89	10.55	11.65
18	15.62	10.16	11.82	12.92
20	16.89	11.43	13.09	14.19
24	19.43	13.97	15.63	16.73
26	20.70	15.24	16.90	18.00
30	23.24	17.78	19.44	20.54
34	25.78	20.32	21.98	23.08
40	29.59	24.13	25.79	26.89
44	32.13	26.67	28.33	29.43
50	35.94	30.48	32.14	33.24
60	42.29	36.83	38.49	39.59
64	44.83	39.37	41.03	42.13
68	47.37	41.91	43.57	44.67
80	54.99	49.53	51.19	52.29

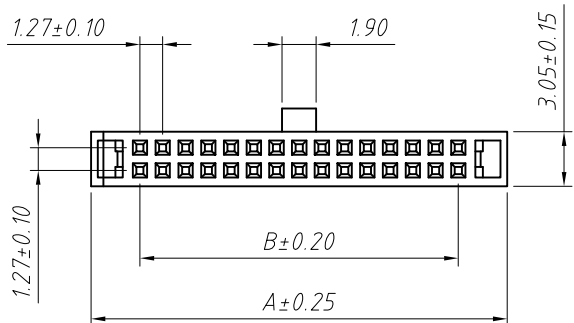
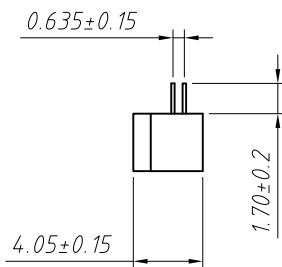
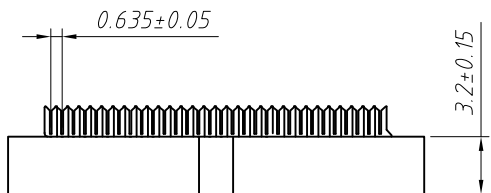
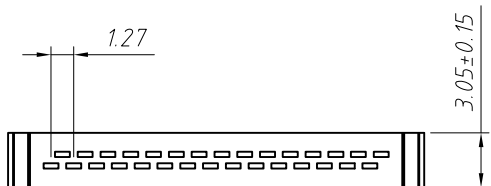
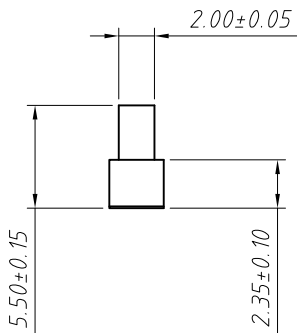
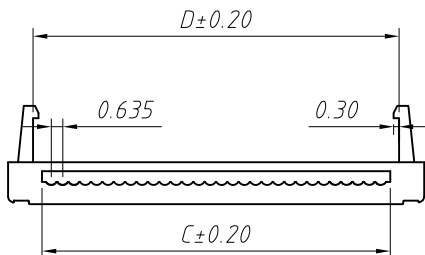
Order Information:
L-KLS1-204C-XX-B

L: RoHS
IDC connectors
1.27mm Pitch
Cover type: 5.00mm
XX-No. of 06~80pin
Color: B=Black G=Gray L=Blue

ANGLE TOLERANCE	PROJECTION	Description:	
±3°		1.27mm Pitch IDC Connector	
GENERAL TOLERANCE	UNITS	mm	KLS P/N:
x.x ±0.30	SHEET SIZE	A4	L-KLS1-204C-XX-B
x.xx ±0.20	Draw:	Daniel	2018-07-10
x.xxx ±0.10	Check:	Daniel	2018-07-10



1 RoHS Compliance



Material:
Housing: PBT,UL 94V-0
Contacts: Phosphor Bronze
Plating: Au or Sn over 50u" nickel

Electrical Characteristics:
Current Rating: 1.0 AMP
Withstand Voltage: 500V AC
Insulator Resistance: 1000M Ohm min
Contact Resistance: 20m Ohm max.
Operating Temperature: -40°C ~ +105°C
Max.Processing Temp: 180°C for 30-60 seconds
(200°C for 10 seconds)

Pin	Dimension mm			
	A	B	C	D
06	8.00	2.54	4.20	5.30
08	9.27	3.81	5.47	6.57
10	10.54	5.08	6.74	7.84
12	11.81	6.35	8.01	9.11
14	13.08	7.62	9.28	10.38
16	14.35	8.89	10.55	11.65
18	15.62	10.16	11.82	12.92
20	16.89	11.43	13.09	14.19
24	19.43	13.97	15.63	16.73
26	20.70	15.24	16.90	18.00
30	23.24	17.78	19.44	20.54
34	25.78	20.32	21.98	23.08
40	29.59	24.13	25.79	26.89
44	32.13	26.67	28.33	29.43
50	35.94	30.48	32.14	33.24
60	42.29	36.83	38.49	39.59
64	44.83	39.37	41.03	42.13
68	47.37	41.91	43.57	44.67
80	54.99	49.53	51.19	52.29

Order Information:

L-KLS1-204CA-XX-B

L: RoHS
IDC connectors
1.27mm Pitch
Cover type: 5.50mm
XX-No. of 06 ~ 80pin
Color: B=Black G=Gray L=Blue

ANGLE TOLERANCE		PROJECTION		Description:	
±3°				1.27mm Pitch IDC Connector	
GENERAL TOLERANCE		UNITS	mm	KLS P/N:	
x.x	±0.30	SHEET SIZE	A4	L-KLS1-204CA-XX-B	
x.xx	±0.20	Draw:	Daniel	2018-07-10	
x.xxx	±0.10	Check:	Daniel	2018-07-10	

NingBo KLS ELECTRONIC CO.,L TD.