

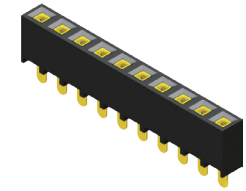
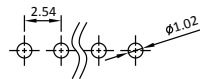
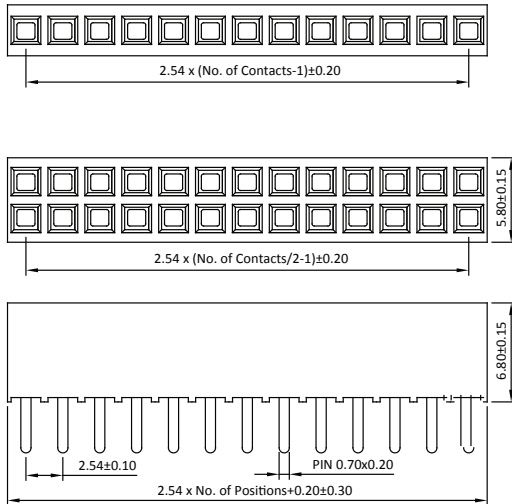
## Female Header 2.54mm 1 & 2 Row H=6.8mm Straight Type

### Specifications

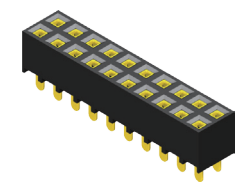
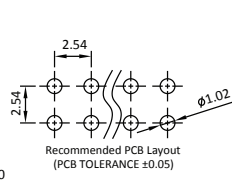
Current Rate:3 AMP  
 Insulation Resistance:1000MΩ Min.  
 Contact Resistance:20mΩ Max.  
 Dielectric Voltage:1000V AC for one minute  
 Operation Temperature:-40°C to +105°C

### Material

Insulator:P.B.T or Hi-Temp. Thermoplastic, UL 94V-0  
 Terminal:Copper Alloy  
 Standard Plating:Gold Flash

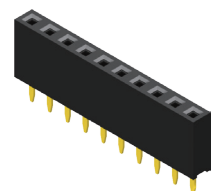
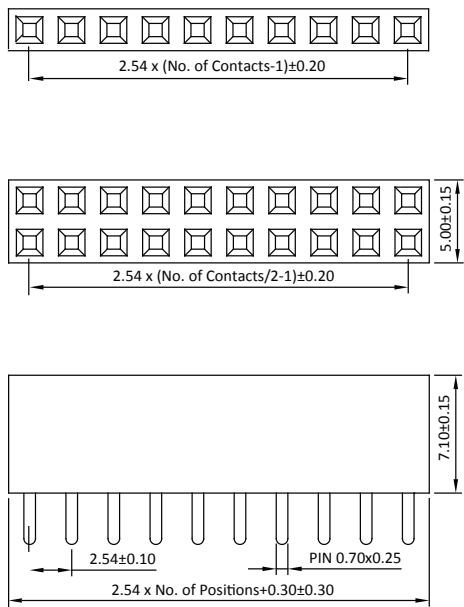


P/N: .5PS1SDA68-1XX

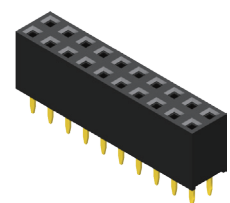
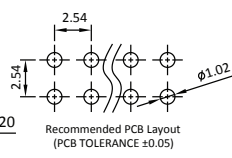


P/N: .5PS1SDA68-2XX

## Female Header 2.54mm 1 & 2 Row H=7.1mm Straight Type



P/N: .5PS1SDA71-1XX



P/N: .5PS1SDA71-2XX

## ORDER INFORMATION

5	P	S	1	S	D	A	X	X	-	X	X	X	X	N	N	N	T	X					
SD: Straight DIP			Plastic Height 68:H=6.8mm 71:H=7.1mm			1: Single Row 2: Dual Row			No. of Contact Per Row (02~40)			N: W/O Bump			N: W/O Peg			U: RoHS Hi-Temp. L: RoHS + PBT					
© G0: Gold Flash			S0: Selective			GA: Gold 5u"			SA: Selective 5u"			GB: Gold 10u"			SB: Selective 10u"			GC: Gold 20u"			SC: Selective 20u"		
GD: Gold 30u"			SD: Selective 30u"			T0: Tin Plated			TE: Tin 200u"			T: Tube, W/O Cap											

Standard Recommend  
 Tube package is not available for under 1\*5 & 2\*5 pin counts

Old P/N: PS1S68-1/2  
 PS1S71-1/2