

## Box Header Series

### KLS1-202C Box Header 1.27\*1.27mm Straight Pin Type

#### Electrical Characteristics:

Current Rating: 1 AMP  
 Insulator Resistance: 1000MΩmin. at DC 500V  
 Contact Resistance: 20mΩmax. at DC 100mA  
 Operating Temperature: -45°C~+105°C

#### Material:

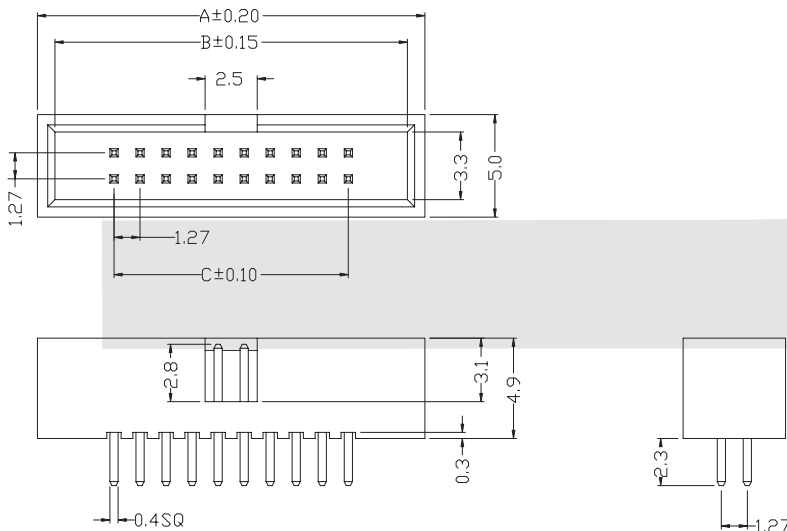
Housing: 30% Glass filled PBT UL94V-0  
 Contacts: Brass  
 Plating: Gold plated: 2u" over 50u" nickel

#### Features:

- \* Fully shrouded for better protection.
- \* Two different color insulator to meet customer's choice.
- \* Straight, Right angle and Wire Wrap.

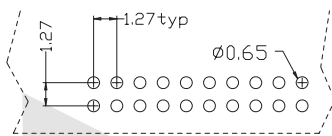


Straight Pin Type



Dimension

position	A	B	C
08	11.28	9.58	3.81
10	12.55	10.85	5.08
12	13.82	12.12	6.35
14	15.09	13.39	7.62
16	16.36	14.66	8.89
20	18.90	17.20	11.43
26	22.71	21.01	15.24
30	25.25	23.55	17.78
34	27.79	26.09	20.32
40	31.60	29.90	24.13
44	34.14	32.44	26.67
50	37.95	36.25	30.48
60	44.30	42.60	36.83
68	49.38	47.68	41.91
80	57.00	55.30	49.53



PCB LAYOUT

## ORDER INFORMATION

Product No.: KLS1-202C-XX-S-B

Pos. No. \_\_\_\_\_ B=Black G=Gray  
 Box Header 1.27x1.27mm Series \_\_\_\_\_ S=Straight Pin R=Right Pin T=SMT Pin  
 Number of Contacts: XX=08-80Pin



## Box Header Series

### KLS1-202C Box Header 1.27\*1.27mm Right Pin Type

#### Electrical Characteristics:

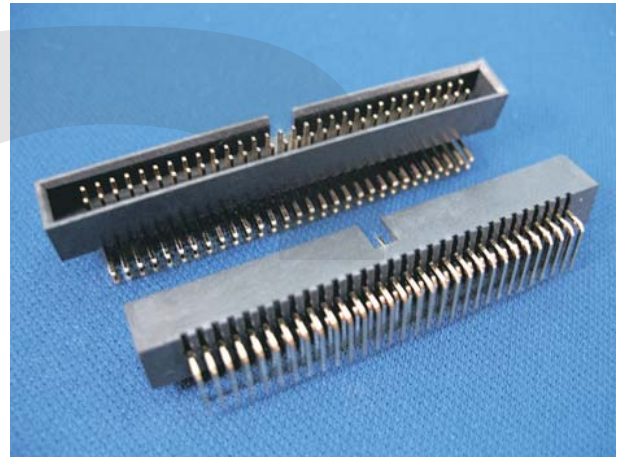
Current Rating: 1 AMP  
 Insulator Resistance: 1000MΩmin. at DC 500V  
 Contact Resistance: 20mΩmax. at DC 100mA  
 Operating Temperature: -45°C~+105°C

#### Material:

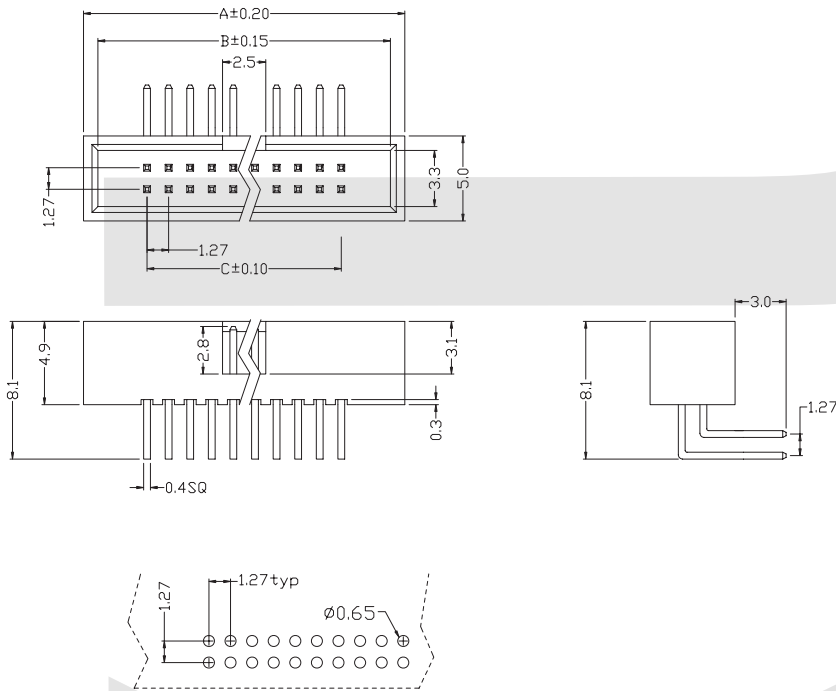
Housing: 30% Glass filled PBT UL94V-0  
 Contacts: Brass  
 Plating: Gold plated: 2u" over 50u" nickel

#### Features:

- \* Fully shrouded for better protection.
- \* Two different color insulator to meet customer's choice.
- \* Straight, Right angle and Wire Wrap.



#### Right angle Type



Dimension

position	A	B	C
08	11.28	9.58	3.81
10	12.55	10.85	5.08
12	13.82	12.12	6.35
14	15.09	13.39	7.62
16	16.36	14.66	8.89
20	18.90	17.20	11.43
26	22.71	21.01	15.24
30	25.25	23.55	17.78
34	27.79	26.09	20.32
40	31.60	29.90	24.13
44	34.14	32.44	26.67
50	37.95	36.25	30.48
60	44.30	42.60	36.83
68	49.38	47.68	41.91
80	57.00	55.30	49.53

P.C.B Layout

## ORDER INFORMATION

Product No.: KLS1-202C-XX-R-B

Pos. No. \_\_\_\_\_ B=Black G=Gray  
 Box Header 1.27x1.27mm Series \_\_\_\_\_ S=Straight Pin R=Right Pin T=SMT Pin  
 Number of Contacts: XX=08-80Pin

## Box Header Series

### KLS1-202C Box Header 1.27\*1.27mm SMT Type

#### Electrical Characteristics:

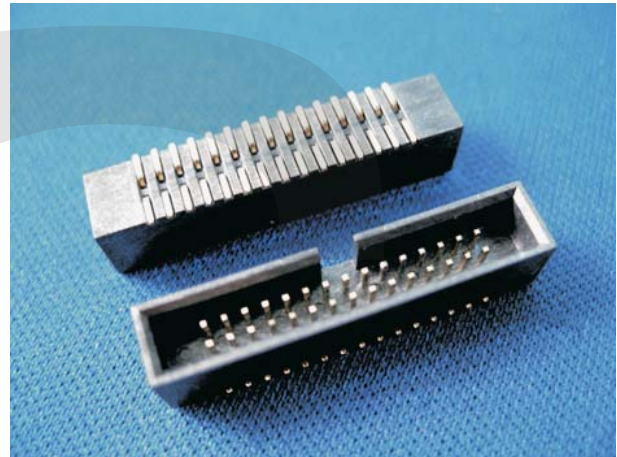
Current Rating: 1 AMP  
 Insulator Resistance: 1000MΩmin. at DC 500V  
 Contact Resistance: 20mΩmax. at DC 100mA  
 Operating Temperature: -45°C~+105°C

#### Material:

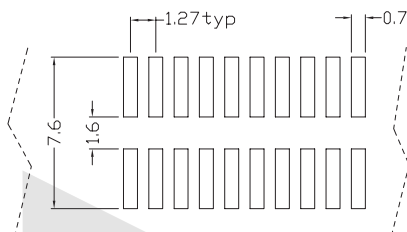
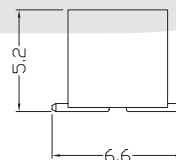
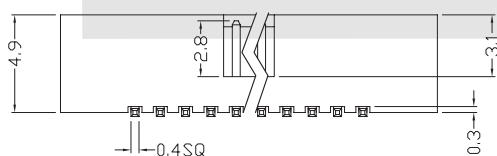
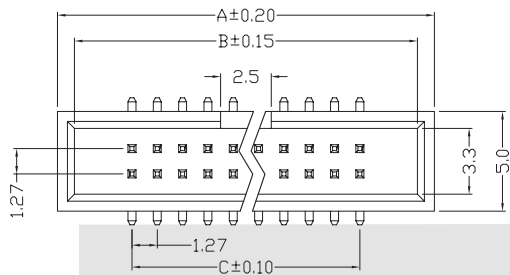
Housing: 30% Glass filled PBT UL94V-0  
 Contacts: Brass  
 Plating: Gold plated: 2u" over 50u" nickel

#### Features:

- \* Fully shrouded for better protection.
- \* Two different color insulator to meet customer's choice.
- \* Straight, Right angle and Wire Wrap.



SMT Type



P.C.B Layout

Dimension

position	A	B	C
08	11.28	9.58	3.81
10	12.55	10.85	5.08
12	13.82	12.12	6.35
14	15.09	13.39	7.62
16	16.36	14.66	8.89
20	18.90	17.20	11.43
26	22.71	21.01	15.24
30	25.25	23.55	17.78
34	27.79	26.09	20.32
40	31.60	29.90	24.13
44	34.14	32.44	26.67
50	37.95	36.25	30.48
60	44.30	42.60	36.83
68	49.38	47.68	41.91
80	57.00	55.30	49.53

## ORDER INFORMATION

Product No.: KLS1-202C-XX-T-B

Pos. No. \_\_\_\_\_  
 Box Header 1.27x1.27mm Series

B=Black G=Gray  
 S=Straight Pin R=Right Pin T=SMT Pin  
 Number of Contacts: XX=08-80Pin