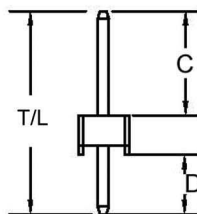
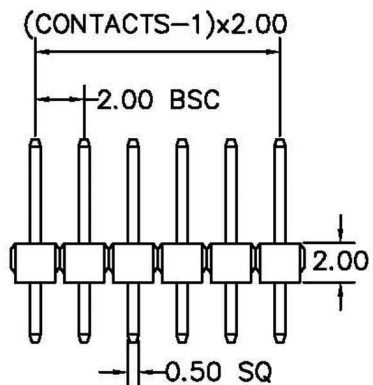


RECOMMENDED P.C.B LAYOUT



T/L= 8.7 mm C= 3.9 mm D= 2.8 mm

CONTACTS	1X21
1X2	1X22
1X3	1X23
1X4	1X24
1X5	1X25
1X6	1X26
1X7	1X27
1X8	1X28
1X9	1X29
1X10	1X30
1X11	1X31
1X12	1X32
1X13	1X33
1X14	1X34
1X15	1X35
1X16	1X36
1X17	1X37
1X18	1X38
1X19	1X39
1X20	1X40

**MATERIAL**  
 HOUSING : THERMOPLASTIC UL94V-0  
 CONTACT : COPPER ALLOYS

**SPECIFICATION**  
 CURRENT: 1A  
 OPERATING TEMPERATURE: -55°C TO +105°C  
 CONTACT RESISTANCE : 20 MILLIOHMS MAX  
 INSULATION RESISTANCE : 5000 MEGAOHMS MIN  
 DIELECTRIC STRENGTH : 1000 VAC MIN

RoHS  
Compliant

**HSM** 玄茂科技股份有限公司  
**HSUAN MAO TECHNOLOGY CO., LTD.**

APPD.  
核准 HELEN  
 DWG.  
製圖 ABBY  
 DATE 制表日  
2012/08/29

SCALE  
比例 參考  
 UNIT  
單位 M M  
 PAGE  
張數 1 OF 1  
 TOLERANCE  
容許公差  
.0±0.38  
.00±0.25  
ANG±15°  
 SIZE  
紙張尺寸 A 4  
 REV.  
版次 B

PART NAME 品名  
2.0mm PIN HEADER SINGLE ROW  
1XXXP STRAIGHT TYPE H=2.0mm  
(C=3.9mm D=2.8mm) ROHS  
 PART NO.  
料號 C6100-XXASXAS 0R