

REV.	SPECIFICATION	ECN NO.	APPD.
R10		ECN220604	

**Material and Plating:**

**Housing:** LCP, UL94V-0, Natural Color.

**Signal Contacts:** Brass.

Gold Plated on contact Area and 80u" min Tin or Gold Flash plated on solder tail over 50u" min Nickel

**Electrical Characteristics:**

**Current Rating:** 0.5 AMP.

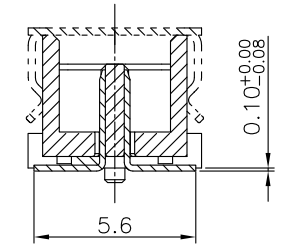
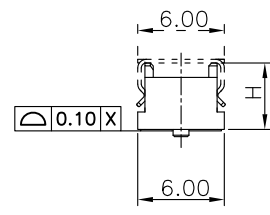
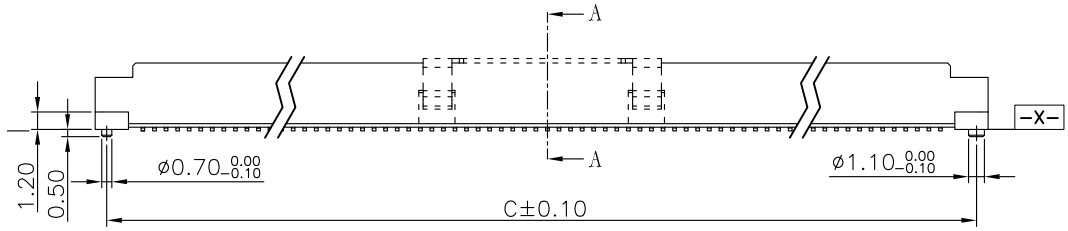
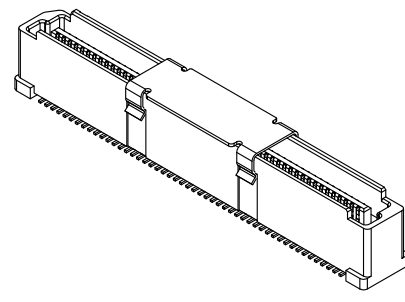
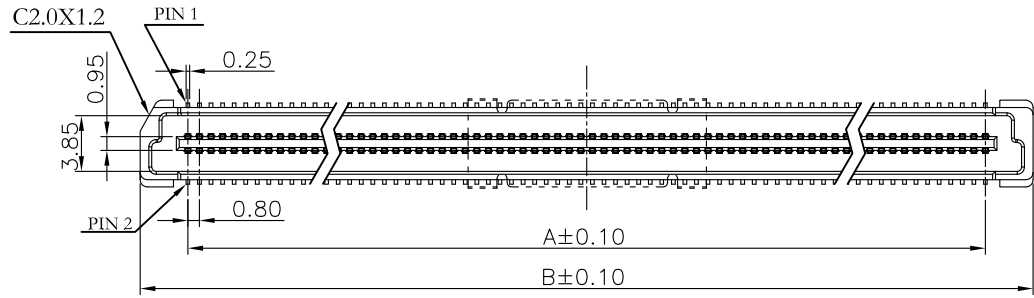
**Dielectric Withstanding Voltage:** AC 500V For 1 minute.

**Insulator Resistance:** 500MΩ min. at DC 250V.

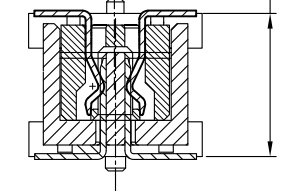
**Contact Resistance:** 30mΩ max. at DC 100mA.

**Operating Temperature:** -45°C~+125°C.

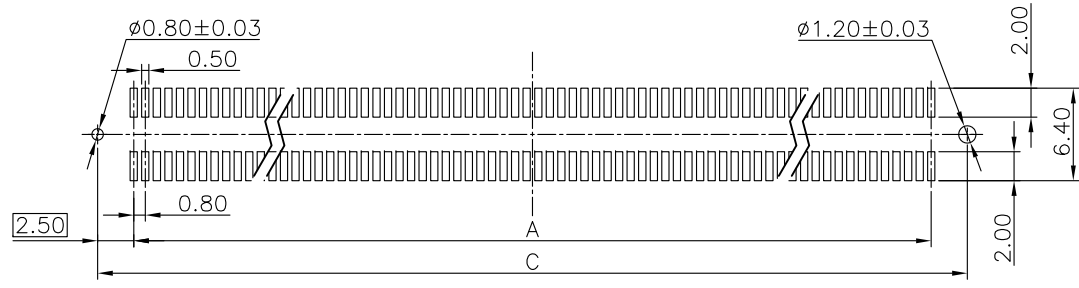
**\*RoHS Compliant**



Section A-A  
Scale: 2:1



Stacked Height Y



P.C. Board Layout  
(Tolerance: ±0.05)

2381- xx C xx D P x T - M

Series ———— M: Metal Cap  
 Position ———— T: Tape & Reel Package  
 G: Gold Plated ———— Code 1~4  
 C: Selective Gold Plated ————  
 00: G/F ———— P: With Post  
 10: 10 μ" ———— N: Without Post  
 30: 30 μ" ———— D: SMD Type

"*" Available Position							
Code				Pos.	Dimension		
H1	H2	H3	H4		A	B	C
*			*	60	23.20	29.80	28.20
*	*			80	31.20	37.80	36.20
			*	100	39.20	45.80	44.20
*				140	55.20	61.80	60.20

Code	1	2	3	4				
Height(H)	4.60	5.60	6.60	7.60				
Height(Y)	5.0	9.0	6.0	10.0	7.0	11.0	8.0	12.0

Tolerances	Dwg. No.	2381-D0000-001		Title:	
x = ±0.5	Projection	⊕ ⊖		2381 Series Board to Board 0.8mm Male Type	
.x = ±0.25	Unit	mm	Scale		1:1
.xx = ±0.15	Drawn By	ZY 06/02'22			

**OUPIN**  
 OUPIIN ELECTRONIC(KUNSHAN) CO., LTD.  
 P/N: 2381-xxCxxDPxT-M  
 SHEET 1/1 Ver.No. R10