

Connector

I.D.C Socket Series

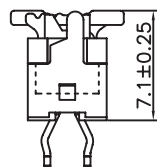
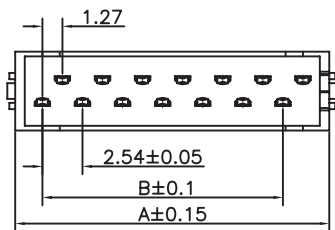
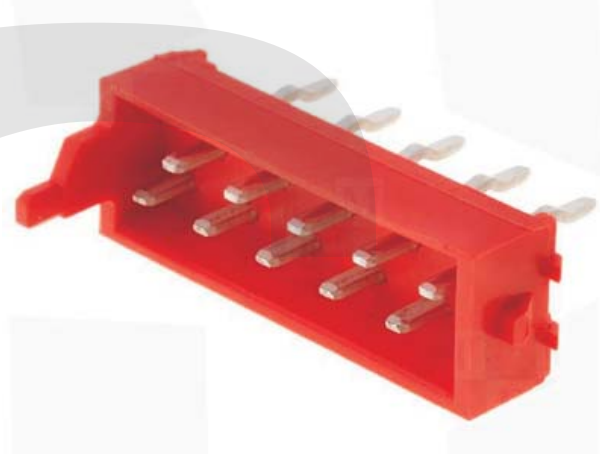
KLS1-204M Connectors micro-match 2.54mm

Electrical Characteristics:

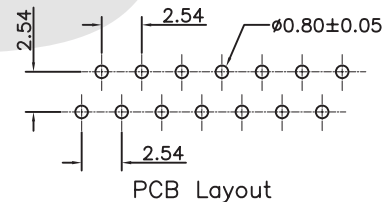
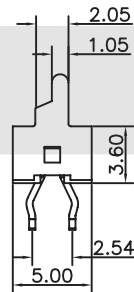
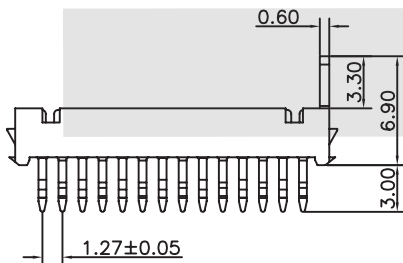
Current Rating: 1 AMP
Insulator Resistance: 1000M Ohm min. at DC 250V
Contact Resistance: 20m Ohm max. at DC 100mA
Operating Temperature: -45°C~+105°C

Material:

Housing: PBT UL94V-0
Contacts: Brass
Plating: Selective gold plated: gold plated on mating area and Nickel plated on wire cutting area
Gold plated: 3u" over 50u" nickel
Cable: 1.27mm (0.050") pitch flat cable



Mating Height Draw.



PCB Layout

| Part No. | Dimension | | Part No. | Dimension | | Part No. | Dimension | |
|----------|-----------|-------|----------|-----------|-------|----------|-----------|-------|
| | A | B | | A | B | | A | B |
| 04 | 7.20 | 2.54 | 12 | 17.36 | 12.70 | 20 | 27.52 | 22.86 |
| 06 | 9.74 | 5.08 | 14 | 19.90 | 15.24 | 22 | 30.06 | 25.40 |
| 08 | 12.28 | 7.62 | 16 | 22.44 | 17.78 | 24 | 32.60 | 27.94 |
| 10 | 14.82 | 10.16 | 18 | 24.98 | 20.32 | 26 | 35.14 | 30.48 |

ORDER INFORMATION

Product NO.: KLS1-204M-XX-R

Pos. NO. _____ Insulator Color: R=Red
Connectors micro-match 2.54mm Series _____ Number of Contacts: XX=06-26Pin