

D

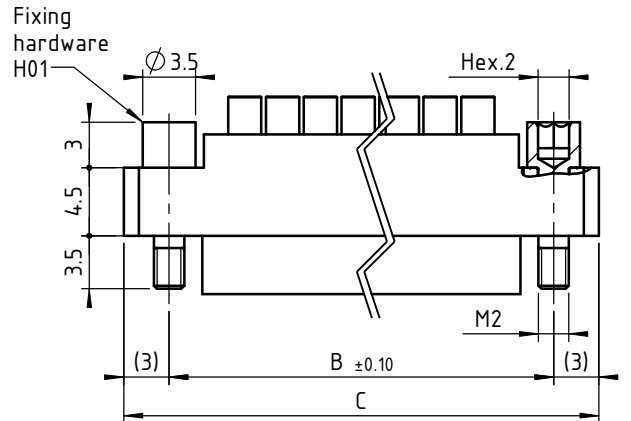
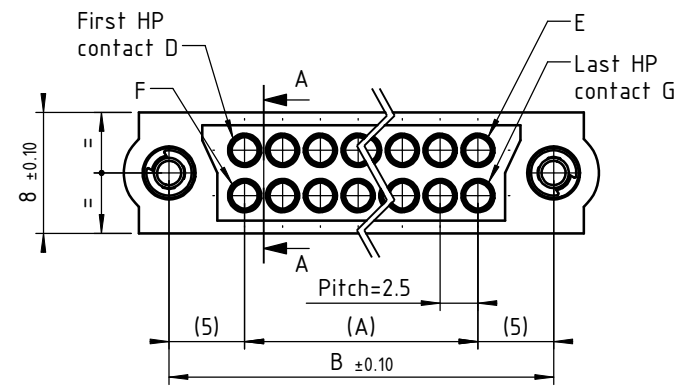
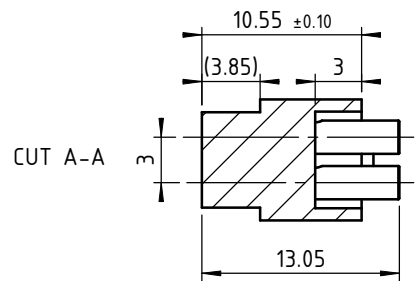
C

B

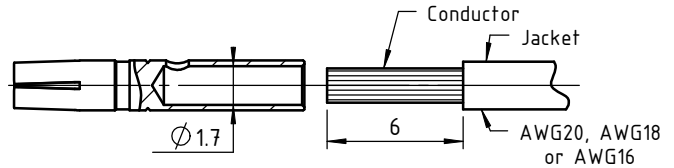
A

4

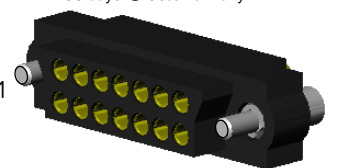
4



HP contact 22-4310 to crimp or to solder Scale : 3:1



3D view scale : 1.5:1



TECHNICALS FEATURES

MATERIALS

INSULATOR : Special PPS (Polyphenylene Sulfide Fibreglass filled thermoplastic) UL 94-V0

- Radiation resistance
- No humidity absorption
- Oxygen free

Note : PPS characteristics are recognized for space applications

FIXING HARDWARE :

- Jackscrew : Stainless steel

TECHNICAL FEATURES for 22 HP CONTACTS

MATERIAL

- Body Copper alloy / Ni + Au 0.5 μ

MECHANICAL

- Endurance 500 cycles min. up to 2500.
- Insertion force From 0.60 to 5N per contact
- Extraction force From 0.50 to 2N per contact
- Secure overlapping 1.30 mm
- Contact replacement In insulator 5 cycles

ELECTRICAL

- Intensity 10 A with AWG16
8A with AWG18
5A with AWG20
- Contact resistance max. 6 mΩ
- Maximum voltage (sea level) 1000V (RMS)
- Operating voltage (sea level) 180 V AC/500 mA

ENVIRONMENTAL

- Temperature range From -60°C to +260°C
- Vibration severity 0.75mm, 10 g RMS 6 hours long random with superimposed sinusoid. No intermittencies measured when using an H.S.L.I. (High Speed Logic Interrupt) detector with a trip threshold of 2 ns.
- Shock severity 100g for 6 ms
- Solvent resistance HcFc 141 bMGX (ATOCHEM) solvent
- Salt spray test 96 hrs
- Humidity test 56 days @ 90% humidity

3

3

CONNECTOR SERIES 340 FEMALE

HP contact number zz	Distance between the axes in mm		Length in mm	HP contact reference mark number			
	A	B		D	E	F	G
04	2.5	12.5	18.5	1	2	3	4
06	5	15	21	1	3	4	6
08	7.5	17.5	23.5	1	4	5	8
10	10	20	26	1	5	6	10
12	12.5	22.5	28.5	1	6	7	12
14	15	25	31	1	7	8	14
16	17.5	27.5	33.5	1	8	9	16
18	20	30	36	1	9	10	18
20	22.5	32.5	38.5	1	10	11	20
22	25	35	41	1	11	12	22
24	27.5	37.5	43.5	1	12	13	24
26	30	40	46	1	13	14	26
28	32.5	42.5	48.5	1	14	15	28
30	35	45	51	1	15	16	30
32	37.5	47.5	53.5	1	16	17	32
34	40	50	56	1	17	18	34
36	42.5	52.5	58.5	1	18	19	36
38	45	55	61	1	19	20	38
40	47.5	57.5	63.5	1	20	21	40
42	50	60	66	1	21	22	42
44	52.5	62.5	68.5	1	22	23	44
46	55	65	71	1	23	24	46
48	57.5	67.5	73.5	1	24	25	48
50	60	70	76	1	25	26	50
52	62.5	72.5	78.5	1	26	27	52
54	65	75	81	1	27	28	54
56	67.5	77.5	83.5	1	28	29	56
58	70	80	86	1	29	30	58
60	72.5	82.5	88.5	1	30	31	60
62	75	85	91	1	31	32	62
64	77.5	87.5	93.5	1	32	33	64

Tools recommended for HP contacts

Crimping following cable instruction IC22HP02	
HP series 22 contacts insertion & removal	C13997
Daniels AF8 hand crimp tool	16459
Positioner for Daniels AF8 tool	C16461
AWG16 crimp tool setting	Position 6
AWG18 crimp tool setting	Position 5
AWG 20 crimp tool setting	Position 4



www.nicomatic.com
Mail : nicomatic@nicomatic.fr
Tel : +33 (0)4.50.36.13.85

2	12/05/11	N.P.		E.M.
Iss	Date	Drawn	Checked	Approved

Item : Connector CMM340 female on cable, zz HP contacts 22-4310, H01

Folder : X:\Méthodes\Plans clients\Plans clients 2D\25 - CMM340\Connecteurs Femelles\342E\342E000H01-00zz-4310_cl

This document and drawings, sketches, and schematic drawings are the property of the NICOMATIC company, and no parts thereof may be reproduced and used without the written consent of the owner. Law dated 11.03.1902

Catalogue Reference : 342E000H01-00zz-4310

	General tolerance ±0.2	Scale 2:1	Page 1/1
--	------------------------	-----------	----------

D

A4

1

1

2

2

3

3

4

4

