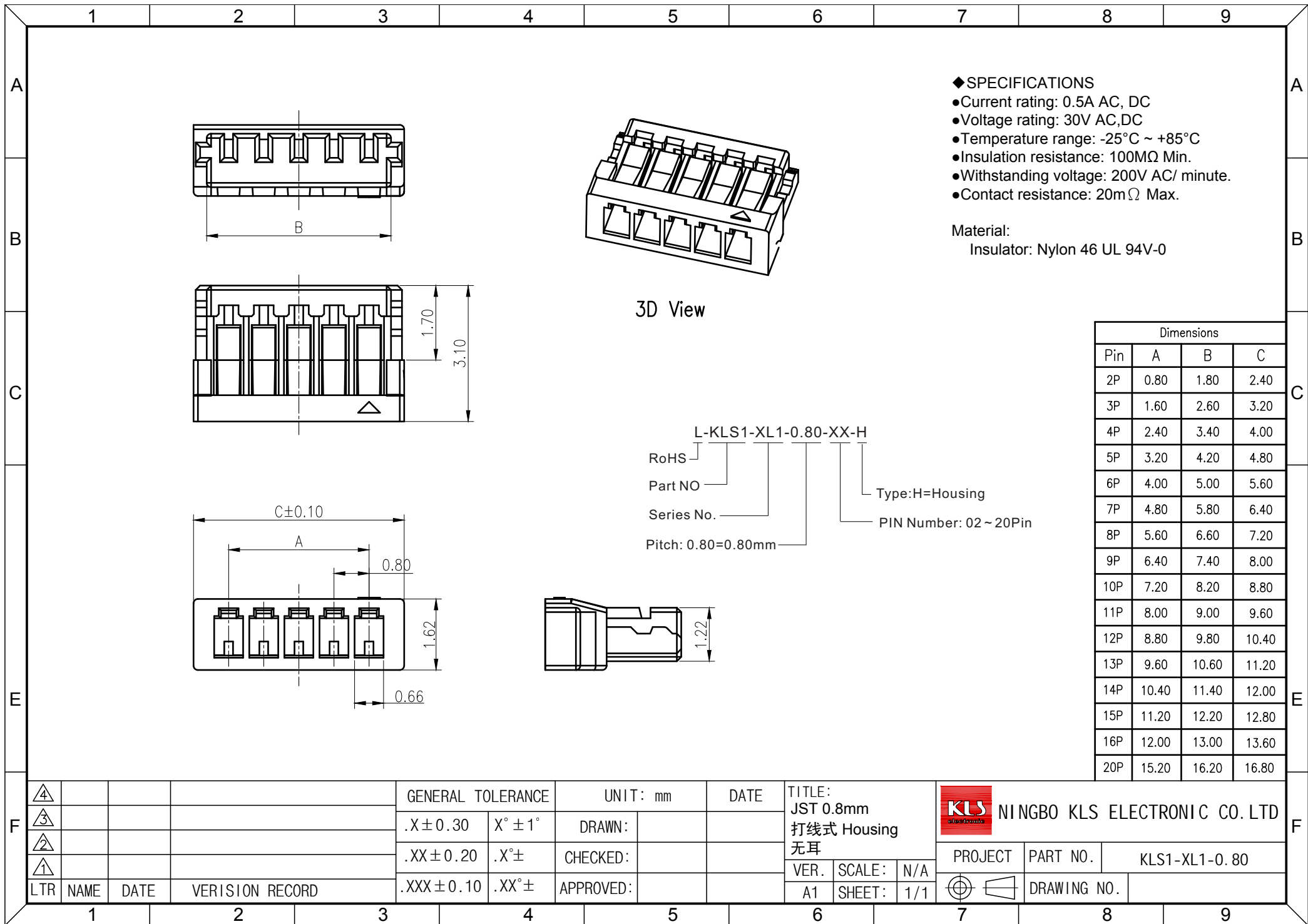


F	△			GENERAL TOLERANCE	UNIT: mm	DATE	TITLE: JST SUR 0.8 SMT 180° Wafer			NINGBO KLS ELECTRONIC CO. LTD
	△			.X ± 0.30	X° ± 1°	DRAWN:	VER. SCALE: N/A			
	△			.XX ± 0.20	.X° ±	CHECKED:	PROJECT PART NO. KLS1-XL1-0.80			
	△			.XXX ± 0.10	.XX° ±	APPROVED:	A2 SHEET: 1/1 DRAWING NO.			
	LTR	NAME	DATE	VERISION RECORD						



◆SPECIFICATIONS

- Current rating: 0.5A AC, DC
- Voltage rating: 30V AC,DC
- Temperature range: -25°C ~ +85°C
- Insulation resistance: 100MΩ Min.
- Withstanding voltage: 200V AC/ minute.
- Contact resistance: 20mΩ Max.

Material:
Insulator: Nylon 46 UL 94V-0

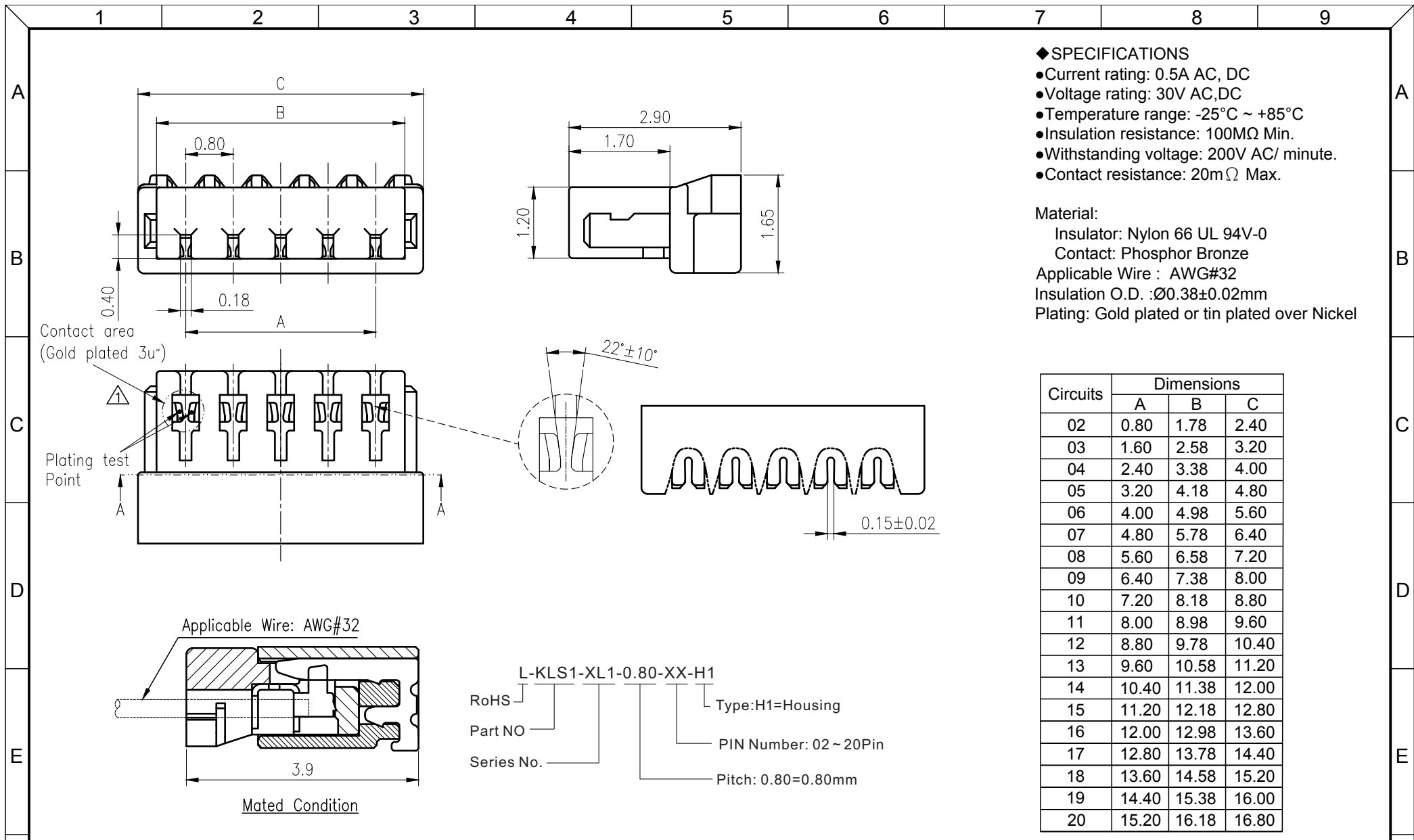
Dimensions			
Pin	A	B	C
2P	0.80	1.80	2.40
3P	1.60	2.60	3.20
4P	2.40	3.40	4.00
5P	3.20	4.20	4.80
6P	4.00	5.00	5.60
7P	4.80	5.80	6.40
8P	5.60	6.60	7.20
9P	6.40	7.40	8.00
10P	7.20	8.20	8.80
11P	8.00	9.00	9.60
12P	8.80	9.80	10.40
13P	9.60	10.60	11.20
14P	10.40	11.40	12.00
15P	11.20	12.20	12.80
16P	12.00	13.00	13.60
20P	15.20	16.20	16.80

L-KLS1-XL1-0.80-XX-H
 RoHS
 Part NO
 Series No.
 Pitch: 0.80=0.80mm
 Type:H=Housing
 PIN Number: 02 ~ 20Pin

△				GENERAL TOLERANCE	UNIT: mm	DATE	TITLE: JST 0.8mm 打线式 Housing 无耳
△				.X±0.30	X°±1°	DRAWN:	
△				.XX±0.20	.X°±	CHECKED:	
△				.XXX±0.10	.XX°±	APPROVED:	
LTR	NAME	DATE	VERISION RECORD				VER. SCALE: N/A A1 SHEET: 1/1

KLS NINGBO KLS ELECTRONIC CO. LTD

PROJECT	PART NO.	KLS1-XL1-0.80
DRAWING NO.		



- ◆ SPECIFICATIONS
- Current rating: 0.5A AC, DC
 - Voltage rating: 30V AC, DC
 - Temperature range: -25°C ~ +85°C
 - Insulation resistance: 100MΩ Min.
 - Withstanding voltage: 200V AC/ minute.
 - Contact resistance: 20mΩ Max.

Material:
 Insulator: Nylon 66 UL 94V-0
 Contact: Phosphor Bronze
 Applicable Wire : AWG#32
 Insulation O.D. : Ø0.38±0.02mm
 Plating: Gold plated or tin plated over Nickel

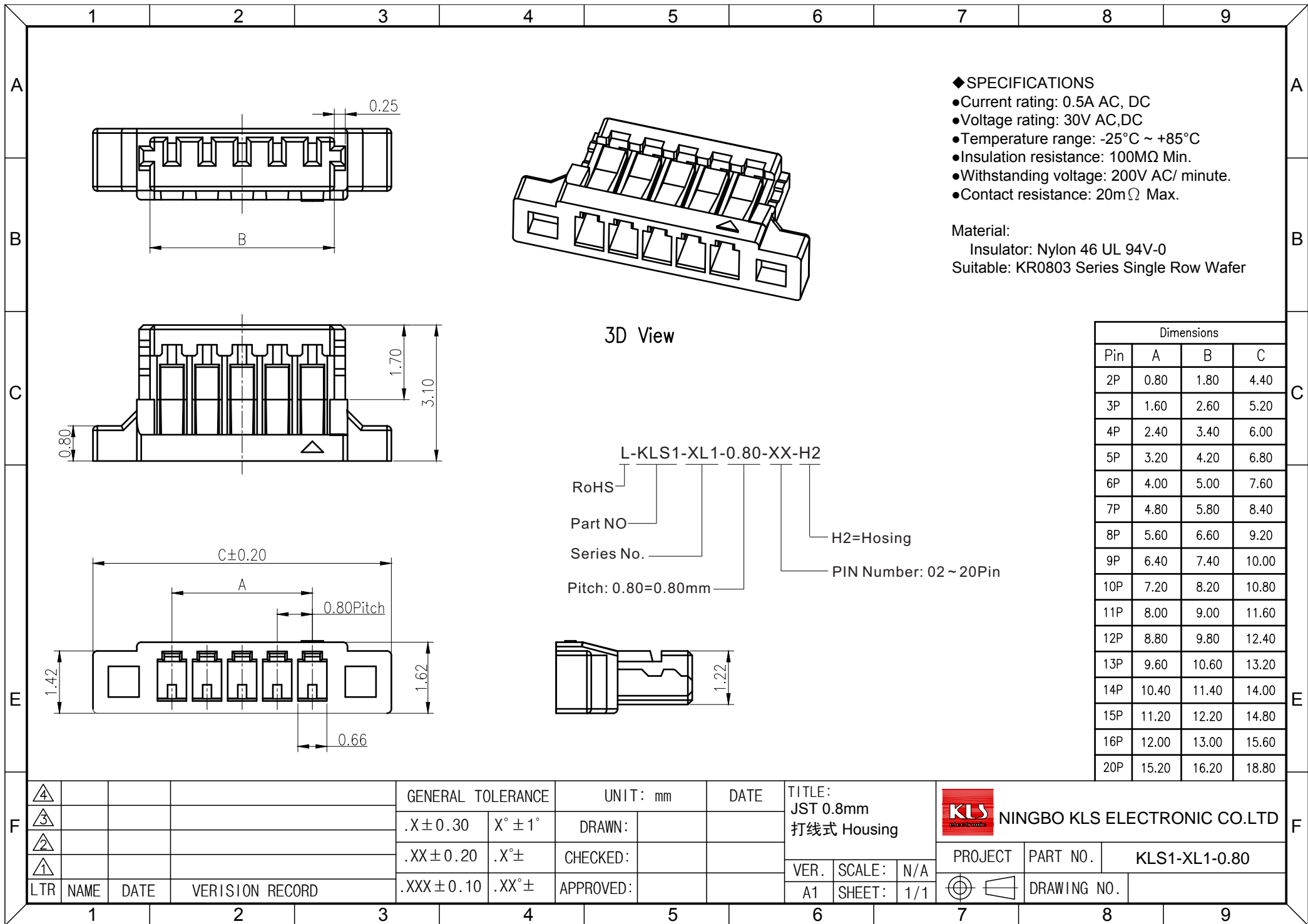
Circuits	Dimensions		
	A	B	C
02	0.80	1.78	2.40
03	1.60	2.58	3.20
04	2.40	3.38	4.00
05	3.20	4.18	4.80
06	4.00	4.98	5.60
07	4.80	5.78	6.40
08	5.60	6.58	7.20
09	6.40	7.38	8.00
10	7.20	8.18	8.80
11	8.00	8.98	9.60
12	8.80	9.78	10.40
13	9.60	10.58	11.20
14	10.40	11.38	12.00
15	11.20	12.18	12.80
16	12.00	12.98	13.60
17	12.80	13.78	14.40
18	13.60	14.58	15.20
19	14.40	15.38	16.00
20	15.20	16.18	16.80

L-KLS1-XL1-0.80-XX-H1

RoHS
 Part NO.
 Series No.

Type:H1=Housing
 PIN Number: 02 ~ 20Pin
 Pitch: 0.80=0.80mm

F				GENERAL TOLERANCE		UNIT: mm		DATE		TITLE: JST SUR 0.8 刺破式 Housing NINGBO KLS ELECTRONIC CO. LTD								
				.X ± 0.30	X° ± 1°	DRAWN:												
				.XX ± 0.20		.X° ±		CHECKED:		PROJECT PART NO. KLS1-XL1-0.80								
				.XXX ± 0.10		.XX° ±		APPROVED:		VER. SCALE: N/A A2 SHEET: 1/1								
LTR NAME DATE VERISION RECORD									DRAWING NO.									
1			2		3		4		5		6		7		8		9	



◆ SPECIFICATIONS

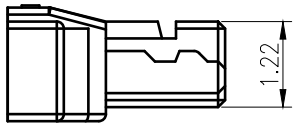
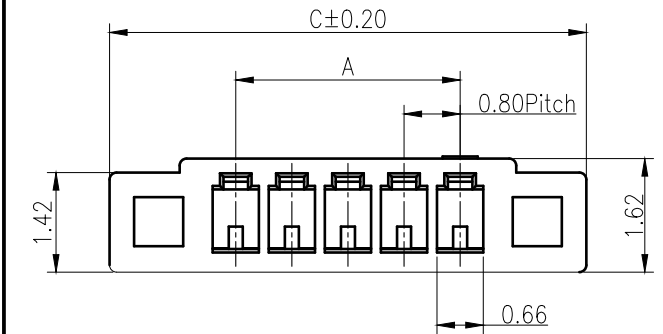
- Current rating: 0.5A AC, DC
- Voltage rating: 30V AC, DC
- Temperature range: -25°C ~ +85°C
- Insulation resistance: 100MΩ Min.
- Withstanding voltage: 200V AC/ minute.
- Contact resistance: 20mΩ Max.

Material:
 Insulator: Nylon 46 UL 94V-0
 Suitable: KR0803 Series Single Row Wafer

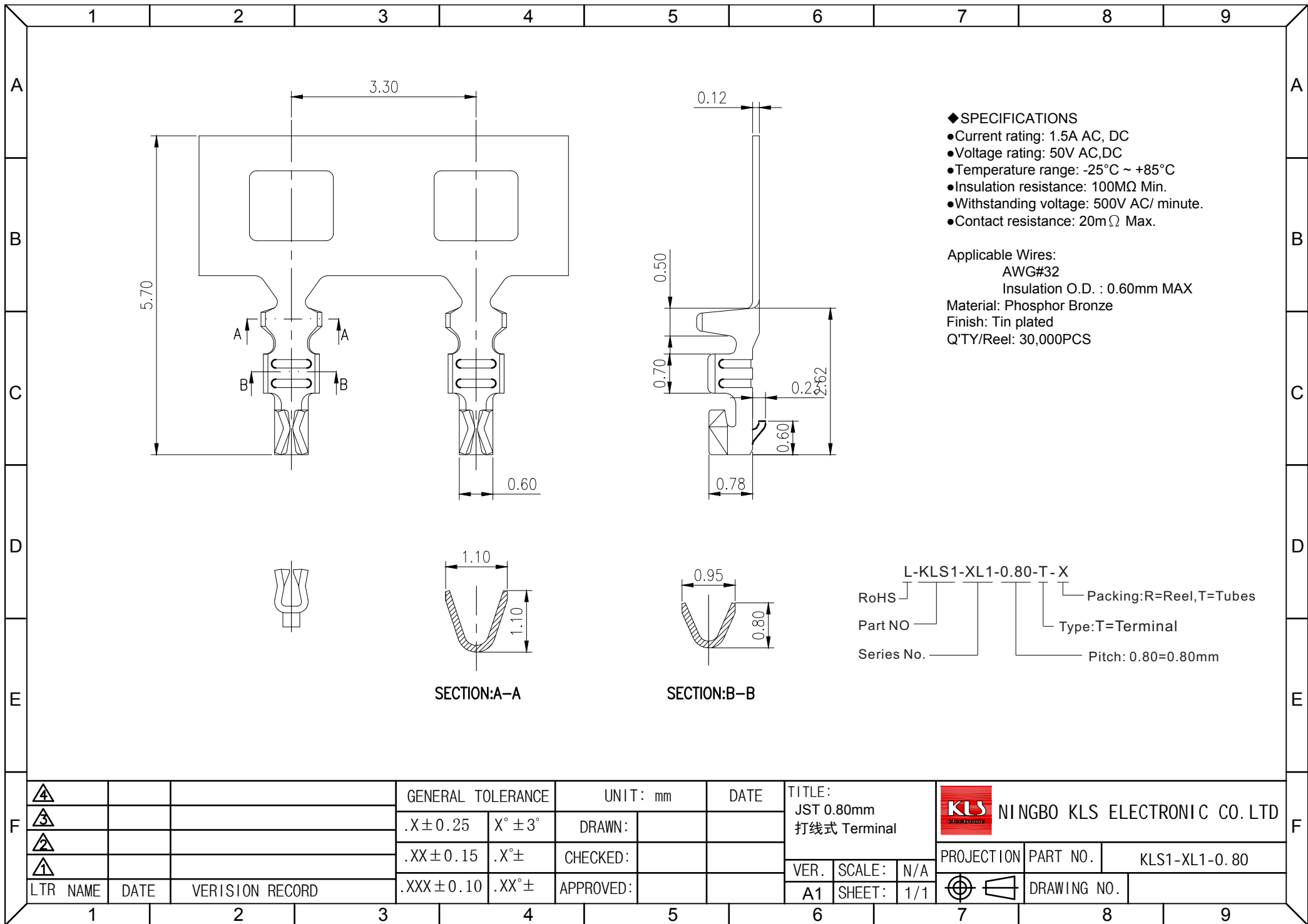
3D View

Dimensions			
Pin	A	B	C
2P	0.80	1.80	4.40
3P	1.60	2.60	5.20
4P	2.40	3.40	6.00
5P	3.20	4.20	6.80
6P	4.00	5.00	7.60
7P	4.80	5.80	8.40
8P	5.60	6.60	9.20
9P	6.40	7.40	10.00
10P	7.20	8.20	10.80
11P	8.00	9.00	11.60
12P	8.80	9.80	12.40
13P	9.60	10.60	13.20
14P	10.40	11.40	14.00
15P	11.20	12.20	14.80
16P	12.00	13.00	15.60
20P	15.20	16.20	18.80

L-KLS1-XL1-0.80-XX-H2
 RoHS
 Part NO
 Series No.
 Pitch: 0.80=0.80mm
 H2=Hosing
 PIN Number: 02 ~ 20Pin



F	△4				GENERAL TOLERANCE		UNIT: mm		DATE		TITLE: JST 0.8mm 打线式 Housing			NINGBO KLS ELECTRONIC CO.LTD
	△3				.X±0.30	X°±1°	DRAWN:				PROJECT PART NO. KLS1-XL1-0.80			
	△2				.XX±0.20	.X°±	CHECKED:				VER. SCALE: N/A	DRAWING NO.		
	△1				.XXX±0.10	.XX°±	APPROVED:				A1 SHEET: 1/1			
	LTR	NAME	DATE	VERISION RECORD										



- ◆ SPECIFICATIONS
- Current rating: 1.5A AC, DC
 - Voltage rating: 50V AC, DC
 - Temperature range: -25°C ~ +85°C
 - Insulation resistance: 100MΩ Min.
 - Withstanding voltage: 500V AC/minute.
 - Contact resistance: 20mΩ Max.

Applicable Wires:
 AWG#32
 Insulation O.D. : 0.60mm MAX
 Material: Phosphor Bronze
 Finish: Tin plated
 Q'TY/Reel: 30,000PCS

L-KLS1-XL1-0.80-T-X

RoHS ————
 Part NO ————
 Series No. ————

Packing: R=Reel, T=Tubes
 Type: T=Terminal
 Pitch: 0.80=0.80mm

F	▲		GENERAL TOLERANCE		UNIT: mm		DATE		TITLE: JST 0.80mm 打线式 Terminal		 NINGBO KLS ELECTRONIC CO. LTD
	▲		.X ± 0.25	X° ± 3°	DRAWN:				VER. SCALE: N/A		
	▲		.XX ± 0.15	.X° ±	CHECKED:				A1 SHEET: 1/1		
	▲		.XXX ± 0.10	.XX° ±	APPROVED:				DRAWING NO.		
LTR NAME		DATE	VERISION RECORD								
1	2	3	4	5	6	7	8	9			