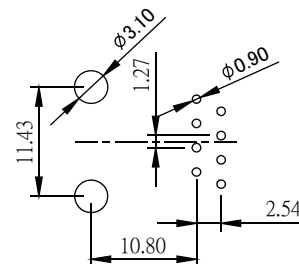
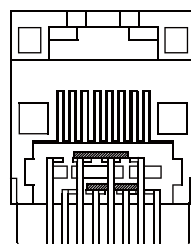
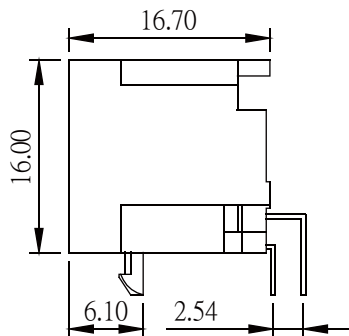
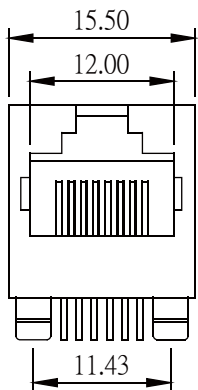
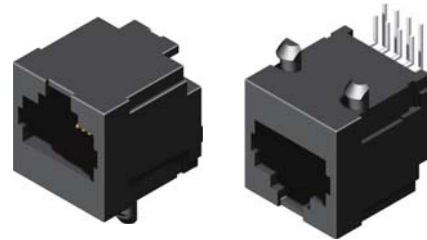


Modular Jack Side Entry H=16.0 W=16.7

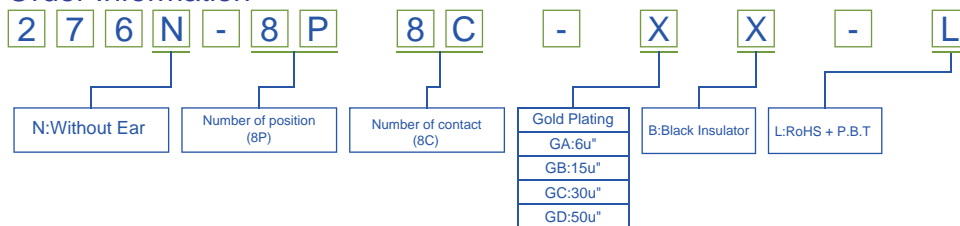
Material&Finish

Housing:P.B.T, UL 94V-0, Black
 Contact :0.35x0.42mm Thickness Phosphor Bronze,
 Gold Plated Over Nickel on Contact Area,
 Tin plated over Nickel on solder area.



Recommended PCB Layout
 (PCB TOLERANCE ±0.05)

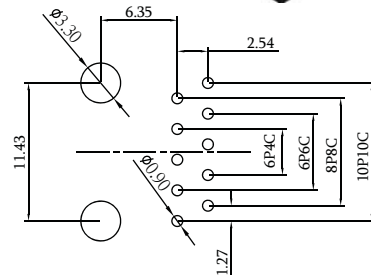
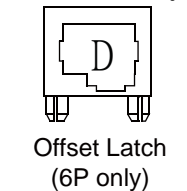
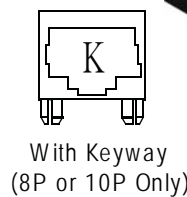
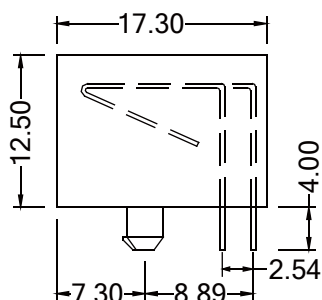
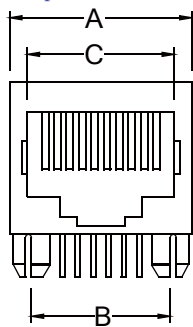
Order Information



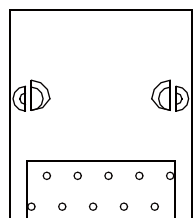
Modular Jack Side Entry H=12.5 W=17.3

Material&Finish

Housing:P.B.T, UL 94V-0, Black
 Contact :0.35mm Thickness Phosphor Bronze,
 Gold Plated Over Nickel on Contact Area,
 Tin plated over Nickel on solder area.



Recommended PCB Layout
 (PCB TOLERANCE ±0.05)



Positions	Contacts	A	B	C
4P	4C	15.00	11.43	7.80
6P	2C/4C/6C	15.00	11.43	9.90
8P	8C	15.00	11.43	11.90
10P	10C	15.00	11.43	11.90

Order Information

