

5,08 mm SOCKET PRINTED CIRCUIT TERMINAL – VERTICAL FEMALE



Production Code : 264 SBDK-DD



TECHNICAL DATA

DIMENSIONS

Width	20,26 mm
Height	25,90 mm
Depth	12,60 mm
Pin range	5,08 mm
Pin thickness	-
Pin hole diameter	-

TECHNICAL DATA

Current	16 A
Voltage	250 V
Cable cross section	0,25 – 2,5 mm ²
Cable stripping	7 mm
Screw size	M3
Nominal torque	0,25 Nm
Flammability rating	V0
Coating of metals	µ3+AG

GENERAL ORDERING DATA

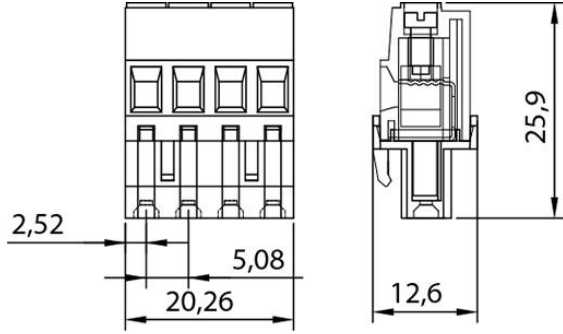
Type	5,08 mm Socket Terminal Ser. Vertical Female Pin 4
Qty	100 pcs
Order no	10.254 - 11.254 - 12.254 13.254 - 14.254 - 15.254
Package weight	0,84 kg
Packaging	Box
Min. Order Qty	100 pcs
Country of origin	TURKEY

* Stock color is green.

CERTIFICATES

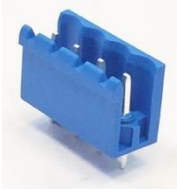
CERTIFICATE	ISSUED BY
TS 10487 EN 60998-2-1	TSE
CE	SZUTEST CO.
RoHS	İNTERTEK A.Ş.
EAC	SERCONS

DRAWINGS



COMBINE PRODUCTS

5,08 mm SBDK-E 180° Open (11.354)



5,08 mm SBDK-E 180° Close (11.454)

