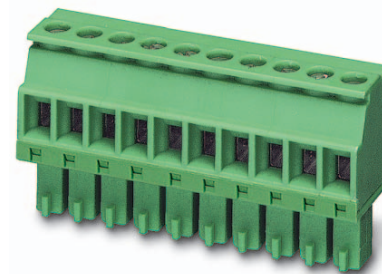


Order No.: 1827156

Type: MCVR 1,5/ 5-ST-3,81

Plug component, Screw connection with tension sleeve



The figure shows a 10-position version of the product

1 Main features



- | | | | |
|---------------------------|--------------------------------------|------------------------|---------------------|
| • No. of pos. | 5 | • Nominal current | 8 A |
| • Conductor cross section | 1.5 mm ² | • Nominal voltage | 160 V |
| • Color | green | • Connection direction | 90 ° |
| • Pitch | 3.81 mm | • Type of packaging | packed in cardboard |
| • Connection method | Screw connection with tension sleeve | | |

2 Your advantages

- ✓ Well-known connection principle allows worldwide use
- ✓ Low temperature rise, thanks to maximum contact force
- ✓ Allows connection of two conductors



Make sure you always use the latest documentation.
It can be downloaded at: phoenixcontact.net/product/1827156

3 Table of contents

1	Main features.....	1
2	Your advantages	1
3	Table of contents	2
4	3D model in PDF can be activated (Acrobat Reader only).....	3
5	item properties.....	4
	5.1 Connection capacity	4
	5.2 Material data	4
6	Dimensions.....	4
	6.1 Dimensions for the product	4
7	Series drawing.....	6
8	Packaging information	6
9	Application.....	6
	9.1 Temperature limit values	6
10	Mechanical tests.....	7
	10.1 Termination and connection method.....	7
	10.2 Pull-out test	7
11	Electrical tests	8
	11.1 Electrical data	8
	11.2 Air and creepage distances	8
12	Current carrying capacity/derating curves	9
13	Environmental and durability tests	11
	13.1 Vibration test	11
14	Classification for connectors.....	11
15	Approvals	11
16	Commercial Data.....	13
17	corresponding headers.....	13
18	Accessories.....	13
19	Combination tests.....	14

1827156 MCVR 1,5/ 5-ST-3,81

4 3D model in PDF can be activated (Acrobat Reader only)



1827156 MCVR 1,5/ 5-ST-3,81**5 item properties**

Order No.	1827156
Type	MCVR 1,5/ 5-ST-3,81
Type of contact	Female connector
Range of articles	MCVR 1,5/...-ST
Pitch	3.81 mm
Number of positions	5
Connection method	Screw connection with tension sleeve
Drive form screw head	Slotted
Screw thread	M2
Tightening torque	0.22 Nm ... 0.25 Nm
Note on tightening torque	
Locking	without

5.1 Connection capacity

Conductor cross section, solid	0.14 mm ² to 1.5 mm ²
Conductor cross section, flexible	0.14 mm ² to 1.5 mm ²
Conductor cross section AWG/kcmil	28 to 16
2 conductors with same cross section, solid	0.08 mm ² to 0.5 mm ²
2 conductors with same cross section, stranded	0.08 mm ² to 0.75 mm ²
Conductor cross section flexible, with ferrule without plastic sleeve	0.25 mm ² to 1.5 mm ²
Conductor cross section flexible, with ferrule with plastic sleeve	0.25 mm ² to 0.5 mm ²
2 conductors with same cross section, stranded, with ferrule without plastic sleeve	0.25 mm ² to 0.34 mm ²
2 conductors with same cross section, stranded, with TWIN ferrules with plastic sleeve	0.5 mm ² to 0.5 mm ²
Cylindrical gauge a x b / diameter	2.4 mm x 1.5 mm / 1.6 mm
Stripping length	7 mm

5.2 Material data

Material of metal parts		
Note	WEEE/RoHS-compliant, whisker-free acc. to IEC 60068-2-82/JEDEC JESD 201	
Contact material	Cu alloy	
Terminal point surface	Sn 4 µm ... 8 µm	
Surface contact area	Sn 4 µm ... 8 µm	
Surface characteristics	hot-dip tin-plated	
Insulating material data		
Insulating material	Housing	Housing
CTI according to IEC 60112	PA	
Flammability rating according to UL 94	600	
Flammability rating according to UL 94	V0	
Color	green (6021)	

6 Dimensions**6.1 Dimensions for the product**

1827156 MCVR 1,5/ 5-ST-3,81

Length	19.01 mm
Width	19.54 mm
Total height	10.4 mm
Dimension a	15.24 mm

1827156 MCVR 1,5/ 5-ST-3,81

7 Series drawing

8 Packaging information

Type of packaging	packed in cardboard
Pieces per package	250

9 Application

9.1 Temperature limit values

Ambient temperature (storage/transport)	-40 °C ... 70 °C
Ambient temperature (assembly)	-5 °C ... 100 °C
Ambient temperature (operation)	-40 °C (dependent on the derating curve)

1827156 MCVR 1,5/ 5-ST-3,81**10 Mechanical tests**

Mechanical test group A	
Specification	IEC 61984:2008-10
Visual test	Test passed
Specification	IEC 60512-1-1:2002-02
Dimensional test	Test passed
Specification	IEC 60512-1-2:2002-02
Resistance of marking	Test passed
Specification	IEC 60068-2-70:1995-12
Insertion and withdrawal force	Test passed
Specification	IEC 60512-13-2:2006-02
No. of cycles	25
Insertion strength per pos. approx.	8 N
Withdraw strength per pos. approx.	6 N
Polarization and coding	Test passed
Specification	IEC 60512-13-5:2006-02
Test force	20 N
Contact retention in insert	Test passed
Specification	IEC 60512-15-1:2008-05
Test force per pos.	28 N

10.1 Termination and connection method

Specification	IEC 60999-1:1999-11
Check for damage to conductor or loosening	Test passed

10.2 Pull-out test

Termination and connection method: pull-out test	
Specification	IEC 60999-1:1999-11
Result	Test passed
Conductor cross section/conductor type/tractive force actual value	0.14 mm ² / solid / > 10 N
Conductor cross section/conductor type/tractive force actual value	0.14 mm ² / stranded / > 10 N
Conductor cross section/conductor type/tractive force actual value	1.5 mm ² / solid / > 40 N
Conductor cross section/conductor type/tractive force actual value	1.5 mm ² / stranded / > 40 N

1827156 MCVR 1,5/ 5-ST-3,81**11 Electrical tests****11.1 Electrical data**

Rated current / conductor cross section	8 A / 1.5 mm ²
Rated insulation voltage (III/2)	160 V
Rated surge voltage (III/2)	2.5 kV
Contact resistance	
Degree of pollution	2

11.2 Air and creepage distances

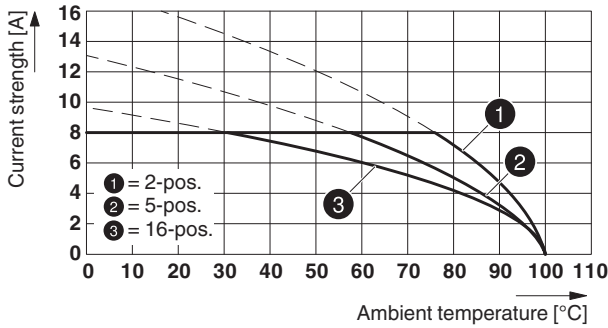
Component	Plug component		
Specification	IEC 60664-1:2007-04		
Mains type	unearthed mains		
Insulating material group	I		
Comparative tracking index (IEC 60112:2003-01)	CTI 600		
Rated insulation voltage	160 V	160 V	320 V
Rated surge voltage	2.5 kV	2.5 kV	2.5 kV
Degree of pollution	3	2	2
Overvoltage category	III	III	II
Minimum clearance case A (inhomogeneous field)	1.5 mm	1.5 mm	1.5 mm
Minimum value of the creepage path requirement in acc. with table	2 mm	1.5 mm	1.6 mm
Note on connection cross section	With connected conductor 1.5 mm ² (solid).		

1827156 MCVR 1,5/ 5-ST-3,81

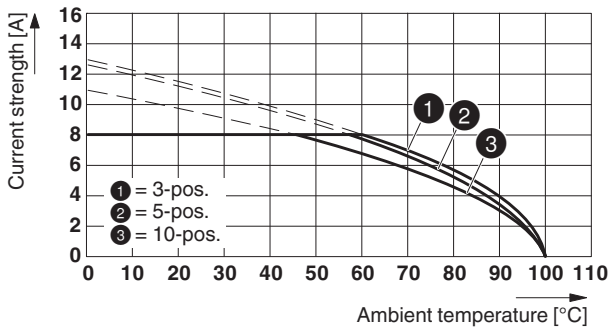
12 Current carrying capacity/derating curves

Specification	IEC 61984:2008-10
Note	Representation based on IEC 60512-5-2:2002-02
Reduction factor	0.8
Number of positions	See diagram
Conductor cross section	1.5 mm ²

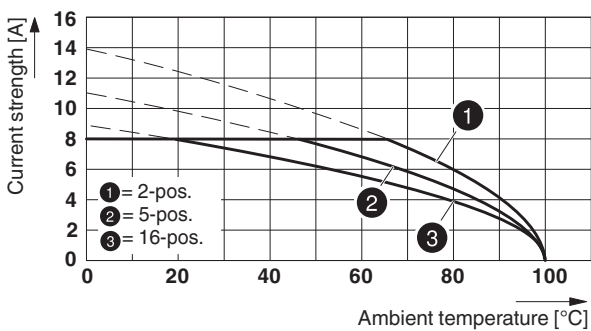
Type: MCV(W/R) 1,5/...-ST-3,81 with MCD 1,5/...-G1-3,81



Type: MCVR 1,5/...-ST-3,81 with MCO 1,5/...-GR-3,81

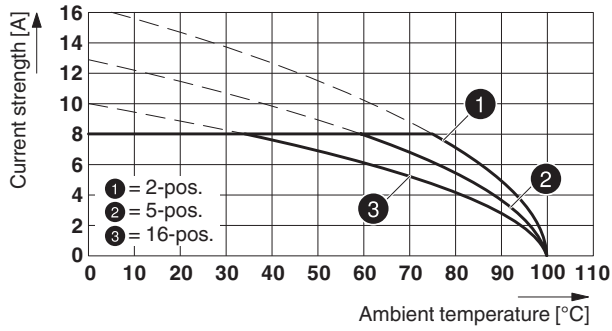


Type: MCVR 1,5/...-ST-3,81 with MCDV 1,5/...-G-3,81



1827156 MCVR 1,5/ 5-ST-3,81

Type: MCV(W/R) 1,5/...-ST-3,81 with MCDV 1,5/...-G1-3,81



Type: MCV(W/R) 1,5/...-STF-3,81 with IMC 1,5/...-ST-3,81

88457_1000_en




1827156 MCVR 1,5/ 5-ST-3,81**13 Environmental and durability tests****13.1 Vibration test**

Specification	IEC 60068-2-6:2007-12
Result	Test passed
Frequency	10 - 150 - 10 Hz
Sweep speed	1 octave/min
Amplitude	0.35 mm (10 - 60.1 Hz)
Acceleration	5 g (60.1 - 150 Hz)
Test duration per axis	2.5 h
Test directions	X-, Y- and Z-axis

14 Classification for connectors

Specification	IEC 61984:2008-10
Main features	Connectors without switching capacity (COC)
Construction form	Fixed connectors
Strain relief elements	without strain relief
Connection method	Can be reconnected
Protection against electric shock	Not encapsulated - touch-proof when inserted
Protective conductor	without PE
Lock	no
Connection method	Screw terminal points

15 Approvals

CSA 				
Use group	B	D		
mm ² /AWG/kcmil	28-16	28-16		
Voltage	300 V	300 V		
Current	8 A	8 A		
VDE Gutachten mit Fertigungsüberwachung 				
mm ² /AWG/kcmil	0.2-1.5			
Voltage	160 V			
Current	8 A			
IECEE CB Scheme 				
mm ² /AWG/kcmil	0.2-1.5			
Voltage	160 V			
Current	8 A			
CCA				
mm ² /AWG/kcmil	0.2-1.5			
Voltage	160 V			
Current	8 A			

1827156 MCVR 1,5/ 5-ST-3,81

cULus Recognized 

Use group	B	D		
mm ² /AWG/kcmil	30-14	30-14		
Voltage	300 V	300 V		
Current	8 A	8 A		

EAC 

1827156 MCVR 1,5/ 5-ST-3,81**16 Commercial Data**

Order No.	1827156
Type	MCVR 1,5/ 5-ST-3,81
Pieces per package	250
Net weight	4.123 g
GTIN	4017918050108
	Information that applies locally, see link on page 1
Country of origin	Information that applies locally, see link on page 1

17 corresponding headers

Order No.	Type
1707036	MCV 1,5/ 5-G-3,81 P14 THR
1707450	MCV 1,5/ 5-G-3,81 P26 THR
1712898	MCV 1,5/ 5-G-3,81 P26 THRR56
1782608	MC 1,5/ 5-G-3,81 P20 THRR56
1803303	MC 1,5/ 5-G-3,81
1803455	MCV 1,5/ 5-G-3,81
1827305	SMC 1,5/ 5-G-3,81
1829989	MCD 1,5/ 5-G-3,81
1830431	MCDV 1,5/ 5-G-3,81
1837463	MCVDU 1,5/ 5-G-3,81
1843101	MCD 1,5/ 5-G1-3,81
1847754	MCDV 1,5/ 5-G1-3,81
1860676	EMCV 1,5/ 5-G-3,81
1861675	MCO 1,5/ 5-GR-3,81
1861756	MCO 1,5/ 5-GL-3,81
1897830	EMC 1,5/ 5-G-3,81
1908790	MC 1,5/ 5-G-3,81 THT
1943784	MC 1,5/ 5-G-3,81 THT-R56

18 Accessories

Description	Order No.	Type
	0804109	SK 3,81/2,8:FORTL.ZAHLEN
Screwdriver, slot-headed, VDE insulated, size: 0.4 x 2.5 x 80 mm, 2-component grip, with non-slip grip	1205037	SZS 0,4X2,5 VDE
Insertion bridge for plugs featuring a screw connection with a 3.81 mm pitch	1733495	EBPL 2-3,81
Insertion bridge for plugs featuring a screw connection with a 3.81 mm pitch	1733505	EBPL 3-3,81
Insertion bridge for plugs featuring a screw connection with a 3.81 mm pitch	1733518	EBPL 4-3,81

1827156 MCVR 1,5/ 5-ST-3,81

19 Combination tests

**MCVR 1,5/...-ST**

Specification

Mechanical tests (A)

Insertion/withdrawal force per position

Polarization when inserted
Requirement >20 NContact holder in insert
Requirements >20 N**Durability tests (B)**Contact resistance R₁ 1st levelContact resistance R₁ 2nd level

Insertion/withdrawal cycles

Rated impulse voltage at sea level
Voltage waveform ≥ (1.2/50 μs)Power-frequency withstand voltage
Voltage waveform ≥ (50/60 Hz)Insulation resistance
Requirements > 5 MΩ**Thermal tests (C)**

Tested number of positions

Tested conductor cross section

Test current

Upper limiting temperature
Requirements < 100°C**Climatic tests (D)**

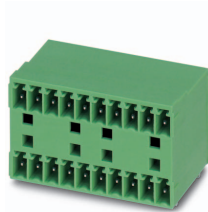
Test sequence 1: low temperature storage

Test sequence 2: heat storage

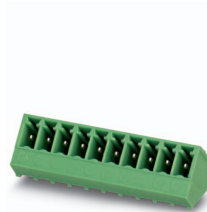
Test sequence 3: noxious gas storage
(ISO 6988)Rated impulse voltage at sea level
Voltage waveform ≥ (1.2/50 μs)Power-frequency withstand voltage
Voltage waveform ≥ (50/60 Hz)**Environmental and endurance tests (E)**

Specification

Degree of protection

**MCD 1,5/...-G1**

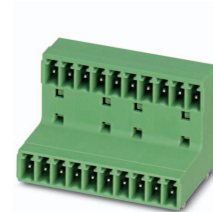
IEC 61984

**SMC 1,5/...-G**

IEC 61984

**MCO 1,5/...-GR**

IEC 61984

**MCD 1,5/...-G**

IEC 61984

approx. 8 N / 6 N

Test passed

Test passed

3.4 mΩ

4.3 mΩ

25

2.95 kV

1.39 kV

> 0.4 TΩ

16

1.5 mm²

8 A

Test passed

-40 °C/2 h

100 °C/168 h

0.2 dm³ SO₂ on 300 dm³/
40 °C/1 cycle

2.95 kV

1.39 kV

IEC 61984:2008-10

Finger safety with IP20
test finger

approx. 8 N / 6 N

Test passed

Test passed

25

2.95 kV

1.39 kV

> 0.2 TΩ

10

1.5 mm²

Test passed

-40 °C/2 h

100 °C/168 h

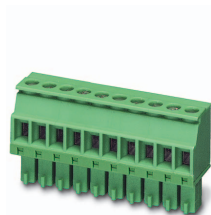
0.2 dm³ SO₂ on 300 dm³/
40 °C/1 cycle

2.95 kV

1.39 kV

IEC 61984:2008-10

Finger safety with IP20
test finger

1827156 MCVR 1,5/ 5-ST-3,81**MCVR 1,5/...-ST**

Specification

Mechanical tests (A)

Insertion/withdrawal force per position

Polarization when inserted
Requirement >20 NContact holder in insert
Requirements >20 N**Durability tests (B)**Contact resistance R_1

Insertion/withdrawal cycles

Contact resistance R_2 Rated impulse voltage at sea level
Voltage waveform $\geq (1.2/50 \mu s)$ Power-frequency withstand voltage
Voltage waveform $\geq (50/60 \text{ Hz})$ Insulation resistance
Requirements > 5 M Ω **Thermal tests (C)**

Tested number of positions

Tested conductor cross section

Test current

Upper limiting temperature
Requirements < 100°C**Climatic tests (D)**

Test sequence 1: low temperature storage

Test sequence 2: heat storage

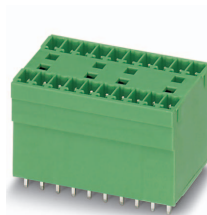
Test sequence 3: noxious gas storage
(ISO 6988)Rated impulse voltage at sea level
Voltage waveform $\geq (1.2/50 \mu s)$ Power-frequency withstand voltage
Voltage waveform $\geq (50/60 \text{ Hz})$ **Environmental and endurance tests (E)**

Specification

Degree of protection

**MCDV 1,5/...-G**

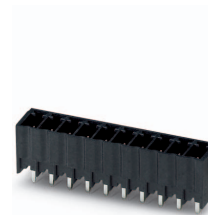
IEC 61984

**MCDV 1,5/...-G1**

IEC 61984

**MC 1,5/...-G-THR**

IEC 61984

**MCV 1,5/...-G-THR**

IEC 61984

approx. 7 N / 5 N

Test passed

Test passed

4 m Ω

25

4.4 m Ω

2.95 kV

1.39 kV

10¹¹ Ω

16

1.5 mm²

8 A

Test passed

-40 °C/2 h

100 °C/168 h

0.2 dm³ SO₂ on 300 dm³/
40 °C/1 cycle

2.95 kV

1.39 kV

IEC 61984:2008-10

Finger safety with IP20
test finger

approx. 8 N / 6 N

Test passed

Test passed

4 m Ω

25

4.3 m Ω

2.95 kV

1.39 kV

> 0.4 T Ω

16

1.5 mm²

8 A

Test passed

-40 °C/2 h

100 °C/168 h

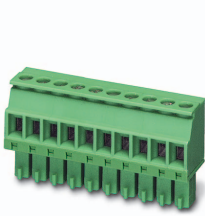
0.2 dm³ SO₂ on 300 dm³/
40 °C/1 cycle

2.95 kV

1.39 kV

IEC 61984:2008-10

Finger safety with IP20
test finger

1827156 MCVR 1,5/ 5-ST-3,81**MCVR 1,5/...-ST**

Specification

Mechanical tests (A)

Insertion/withdrawal force per position

Polarization when inserted
Requirement >20 NContact holder in insert
Requirements >20 N**Durability tests (B)**Contact resistance R_1

Insertion/withdrawal cycles

Contact resistance R_2 Rated impulse voltage at sea level
Voltage waveform $\geq (1.2/50 \mu s)$ Power-frequency withstand voltage
Voltage waveform $\geq (50/60 \text{ Hz})$ Insulation resistance
Requirements > 5 M Ω **Thermal tests (C)**

Tested number of positions

Tested conductor cross section

Test current

Upper limiting temperature
Requirements < 100°C**Climatic tests (D)**

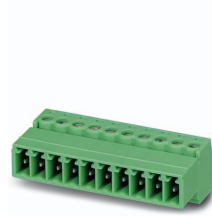
Test sequence 1: low temperature storage

Test sequence 2: heat storage

Test sequence 3: noxious gas storage
(ISO 6988)Rated impulse voltage at sea level
Voltage waveform $\geq (1.2/50 \mu s)$ Power-frequency withstand voltage
Voltage waveform $\geq (50/60 \text{ Hz})$ **Environmental and endurance tests (E)**

Specification

Degree of protection

**IMC 1,5/...-ST**

IEC 61984

approx. 7 N / 3 N

Test passed

Test passed

4 m Ω

25

4.1 m Ω

2.95 kV

1.39 kV

> 0.2 T Ω

16

1.5 mm²

Test passed

-40 °C/2 h

100 °C/168 h

0.2 dm³ SO₂ on 300 dm³/
40 °C/1 cycle

2.95 kV

1.39 kV

IEC 61984:2008-10

Finger safety with IP20
test finger