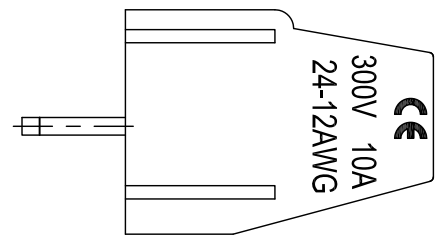
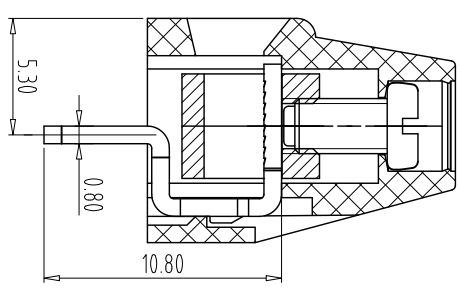
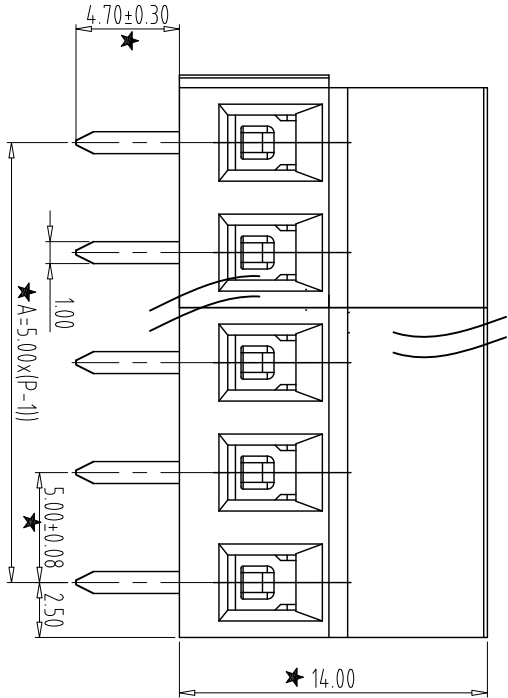
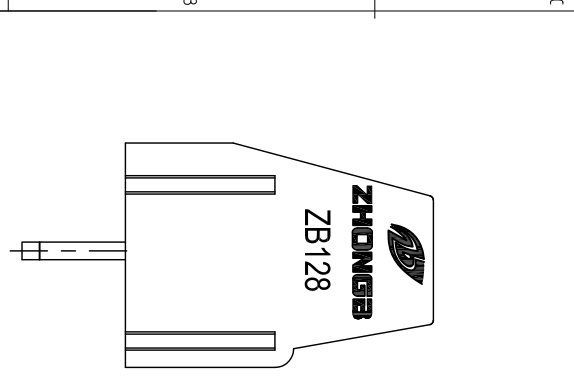


- NOTES:
1. Rating:300V 10A;
 2. Insulation Withstands Voltage: AC2000V/MIN;
 3. Insulation Resistance: 500MΩ or more at DC500V
 4. Using Temperature Range: -40°C/+105°C;
 5. Screw Torque Value:0.4N.m;
 6. Suitable Electric Wire: 12-24AWG .
 7. " ★ " is critical dimension to be controlled.



Total Pitch Tolerances in mm												Nominal dimension range in mm												—		//				
over	0	30	53	70	90	115	150	250	350	500	0	30	53	70	90	115	150	200	250	320	0	10	0	100	150					
to	0	30	53	70	90	115	150	250	350	500	to	30	53	70	90	115	150	200	250	320	to	10	all	to	100	150				
±0.18	±0.25	±0.30	±0.35	±0.40	±0.45	±0.50	±0.60	±0.70	±0.85	±0.20	±0.25	±0.30	±0.35	±0.40	±0.45	±0.55	±0.70	±0.80	±0.90	0.2	0.3	0.3	0.2	0.3	0.5					

ITEM	NAME OF PART	NO. OF PART	Q'TY	MATERIAL	NOTE
DWG	ZX	DATE	2020/05/10	SIZE	A4
CHK	DATE	SCALE	3:1	UNITS	mm
APP.	DATE	SCALE	3:1	SHEET/OF	1/1
			ZB128V-XXP-XS		
NINGBO ZHONGBO PHOTOVOLTAIC TECHNOLOGY CO., LTD			DWGNO. ZB-01-ZB128VXXPXS		