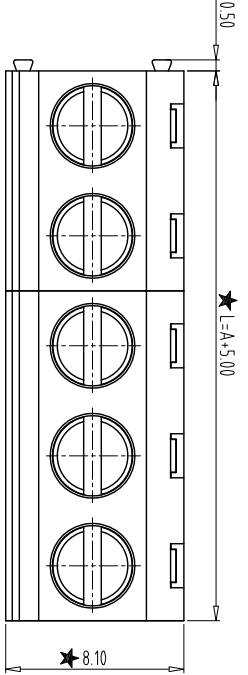
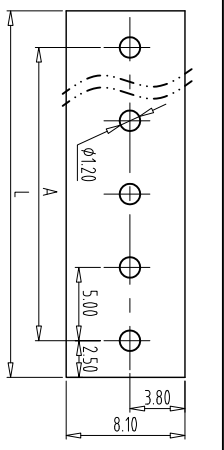


NOTES:

1. Rating: 300V 12A;
2. Insulation Withstands Voltage: AC2000V/MIN
3. Insulation Resistance: 500M Ω or more at DC500V
4. Using Temperature Range: -40°C/+105°C
5. Screw Torque Value: 0.4Nm
6. Suitable Electric Wire: 14-26AWG
- 7, "★" the important dimension.



PCB LAYOUT
S=2:1



Total Pitch Tolerances										Nominal dimension range																			
In mm					In mm					In mm																			
0	30	53	70	90	90	115	150	200	250	0	30	53	70	90	90	115	150	200	250	0	0.2	0.2	0.2	0.3	0.2	0.3	0.3	0.3	0.5
over	to	to	to	to	to	to	to	to	to	over	to	to	to	to	to	to	to	to	to	to	to	to	to	to	to	to	to	to	to
± 0.18	± 0.20	± 0.25	± 0.3	± 0.35	± 0.4	± 0.44	± 0.55	± 0.70	± 0.75	± 0.20	± 0.25	± 0.30	± 0.35	± 0.44	± 0.55	± 0.70	± 0.80	± 0.90	± 0.90	0.2	0.3	0.3	0.3	0.3	0.2	0.3	0.3	0.3	0.5

ITEM	NAME OF PART	NO. OF PART	Q'TY	MATERIAL	NOTE
DWG	ZX	DATE	2020.08.28	UNITS	mm
CHK		DATE		SCALE	3:1
APP.		DATE		SHEET/OF	A4
NINGBO ZHONGBO PHOTOVOLTAIC TECHNOLOGY CO., LTD					
NINGBO ZHONGBO PHOTOVOLTAIC TECHNOLOGY CO., LTD					
NINGBO ZHONGBO PHOTOVOLTAIC TECHNOLOGY CO., LTD					
NINGBO ZHONGBO PHOTOVOLTAIC TECHNOLOGY CO., LTD					
NINGBO ZHONGBO PHOTOVOLTAIC TECHNOLOGY CO., LTD					
NINGBO ZHONGBO PHOTOVOLTAIC TECHNOLOGY CO., LTD					
NINGBO ZHONGBO PHOTOVOLTAIC TECHNOLOGY CO., LTD					
NINGBO ZHONGBO PHOTOVOLTAIC TECHNOLOGY CO., LTD					
NINGBO ZHONGBO PHOTOVOLTAIC TECHNOLOGY CO., LTD					