

## Jumper Wire and Zero Ohm Fixed Resistors

### Performance Specification

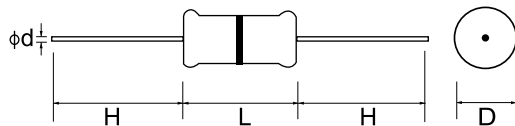
Maximum Resistance	Jumper wire: 0.05Ω Max. Zero Ohm: Ceramic rod : 0.05Ω Max and Steel core: 0.01Ω Max.
Lead Material	Tin - Plated copper
Body Material (ZO-type)	Electrical grade, high performance molding compound
Insulation Resistance	Dry - 10,000MΩ, Wet - 100MΩ
Dielectric Withstanding Voltage	Atmospheric - 500V RMS, Reduced - 325V RMS
Insulation Flammability	Resistor Insulation is self extinguishing within 10 seconds after externally applied flame is removed.
Current Rating	ZOT 25 Amps at 25°C Derating to 0 Amps at 150°C ZOC 16 Amps at 25°C Derating to 0 Amps at 150°C

### Ordering Procedure: Ex.: ZO 1/4W, T/B-5000

Z	O	C	0	W	4	0	0	0	0	0	A	5	0		
<b>Type:</b> Jumper Wire: ZWA = 0.45mm lead wire ZWB = 0.54mm lead wire ZWC = 0.70mm lead wire ZWD = 0.75mm lead wire ZWE = 1.0mm lead wire ZWF = 0.60mm lead wire Zero Ohm Resistors: ZOC = Ceramic core ZOT = Steel core				<b>Wattage:</b> Zero Ohm resistors: W8 = 1/8W W4 = 1/4W Jumper wire: 00 = NIL				<b>Resistance Value:</b> Fill in these 4 digit with "0" to denote no ohmic value.				<b>Packing Type:</b> A = Tape/Box T = Tape/Reel B = Bulk/Box P = Tape/Box of PT-26mm			
<b>Special Feature:</b> 0 = NIL				<b>Tolerance:</b> 0 = NIL				<b>Packing Qty:</b> 1 = 1,000pcs.    2 = 2,000pcs. 5 = 5,000pcs.    7 = 7,000pcs. 8 = 8,000pcs.    C = 10,000pcs. 0 = Bulk/Box				<b>Additional Info.:</b> 0 = NIL M = M-Type			

### Features

- One black band color-coding for easy identification
- Ideal straight - through between point on PC Boards



#### ZO Type

Part No.	Style	Power Rating at 70°C	Dimension (mm)				Std Packing Qty
			D Max	L Max	d±0.05	H±3	
ZOT0W8 / ZOC0W8	ZO - 12	1/8W (0.125W)	1.85	3.5	0.45	28	5,000
ZOT0W4 / ZOC0W4	ZO - 25	1/4W (0.25W)	2.5	6.8	0.54	28	5,000

#### ZW Type

Part No.	Style	L±3	d±0.05	O ± 1	
ZWA	ZW-A	60/34	0.45	52	26
ZWB	ZW-B	60/34	0.54	52	26
ZWC	ZW-C	60/34	0.70	52	26
ZWD	ZW-D	60/34	0.75	52	26
ZWE	ZW-E	60/34	1.00	52	26
ZWF	ZW-F	60/34	0.60	52	26

