

Appearance & Shape: To be free from any defect such as flow, burrs, unevenness etc, As per IEC standards.

Effective Parameters irrespective of material grade (per piece)

- Effective Length (L_e): 51.4 mm
- Effective Area (A_e): 23.5mm²
- Effective Area (A_{Min}): 23.5mm²
- Effective Volume (V_e): 1207mm³

Approximate weight : 5.6g/pc



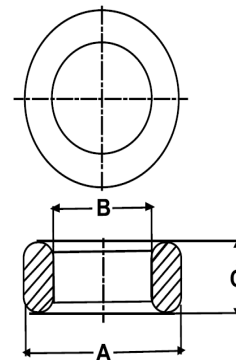
T2106 OL (Un- Coated)

Test Conditions: 10kHz/150mV/CFR COIL,N=01/Lo=Zero/25°C

Material Grade	Initial Permeability (μ_{iac})	AL Value (nH)	Ordering code
CF196	2000 \pm 20%	1150+30%/-20%	CF196T2106
CF139	2100 \pm 20%	1200+30%/-20%	CF139T2106
CF130	3000 \pm 20%	1700+30%/-20%	CF130T2106
CF195A	5000 \pm 20%	2850+30%/-20%	CF195AT2106
CF265	5000 \pm 20%	2850+30%/-20%	CF265T2106
CF190	6000 \pm 20%	3400+30%/-20%	CF190T2106
CF197	7000 \pm 20%	4000+30%/-20%	CF197T2106
CF199	9000 \pm 20%	5200 \pm 30%	CF199T2106

Dimensions(Un-coated Core)

Dimension	Nominal (in mm)	Maximum (in mm)	Minimum (in mm)
A	21.0	21.0	20.5
B	13.0	13.5	12.5
C	6.0	6.0	5.5



For general terms and conditions please visit: http://www.cosmoferrites.com/Downloads/Downloads/bcb70e7c-ae33-40ec-a881-0d5120db57b6_GTC.pdf

Regd. Office & Works: Jabli, Distt. Solan, Himachal Pradesh – 173 209 (India)

Tel: +91 1792 277231/32/36, Fax: +91 1792 277234

E-mail: sales@cosmoferrites.com