

**Appearance & Shape:** To be free from any defect such as flow, burrs, unevenness etc, As per IEC standards.

**Effective Parameters irrespective of material grade (per piece)**

- Effective Length ( $L_e$ ): 35.0 mm
- Effective Area ( $A_e$ ): 17.2mm<sup>2</sup>
- Effective Area ( $A_{Min}$ ): 17.2mm<sup>2</sup>
- Effective Volume ( $V_e$ ): 602mm<sup>3</sup>

**Approximate weight : 3.0g/pc**



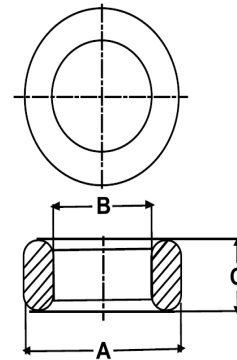
## T1407 OL (Un- Coated)

**Test Conditions: 10kHz/150mV/CFR COIL,N=01/Lo=Zero/25°C**

Material Grade	Initial Permeability ( $\mu_{iac}$ )	AL Value (nH)	Ordering code
CF196	2000 ±20%	1200+30%/-20%	CF196T1407
CF139	2100 ±20%	1300+30%/-20%	CF139T1407
CF130	3000 ±20%	1850+30%/-20%	CF130T1407
CF195A	5000 ±20%	3100+30%/-20%	CF195AT1407
CF265	5000 ±20%	3100+30%/-20%	CF265T1407
CF190	6000 ±20%	3700+30%/-20%	CF190T1407
CF197	7000 ±20%	4300+30%/-20%	CF197T1407
CF199	9000 ±20%	5550 ±30%	CF199T1407

## Dimensions(Un-coated Core)

Dimension	Nominal (in mm)	Maximum (in mm)	Minimum (in mm)
A	14.0	14.3	13.7
B	9.0	9.2	8.8
C	7.0	7.2	6.8



For general terms and conditions please visit: [http://www.cosmoferrites.com/Downloads/Downloads/bcb70e7c-ae33-40ec-a881-0d5120db57b6\\_GTC.pdf](http://www.cosmoferrites.com/Downloads/Downloads/bcb70e7c-ae33-40ec-a881-0d5120db57b6_GTC.pdf)