

Appearance & Shape: To be free from any defect such as flow, burrs, unevenness etc, As per IEC standards.

Effective Parameters irrespective of material grade (per piece)

- Effective Length (L_e): 38.5 mm
 - Effective Area (A_e): 15.7mm²
 - Effective Area (A_{Min}): 15.7mm²
 - Effective Volume (V_e): 603mm³
- Approximate weight : 2.96g/pc**



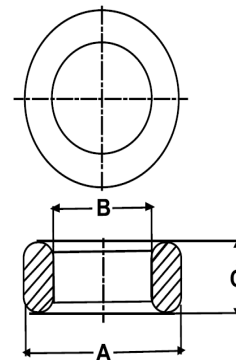
T1605 OL (Un- Coated)

Test Conditions: 10kHz/150mV/CFR COIL,N=01/Lo=Zero/25°C

Material Grade	Initial Permeability (μ_{iac})	AL Value (nH)	Ordering code
CF196	2000 ±20%	1025+30%/-20%	CF196T1605
CF139	2100 ±20%	1075+30%/-20%	CF139T1605
CF130	3000 ±20%	1550+30%/-20%	CF130T1605
CF195A	5000 ±20%	2600+30%/-20%	CF195AT1605
CF265	5000 ±20%	2600+30%/-20%	CF265T1605
CF190	6000 ±20%	3100+30%/-20%	CF190T1605
CF197	7000 ±20%	3600+30%/-20%	CF197T1605
CF199	9000 ±20%	4600 ±30%	CF199T1605

Dimensions(Un-coated Core)

Dimension	Nominal (in mm)	Maximum (in mm)	Minimum (in mm)
A	16.0	16.4	15.6
B	9.6	9.9	9.3
C	5.0	5.2	4.8



For general terms and conditions please visit: http://www.cosmoferrites.com/Downloads/Downloads/bcb70e7c-ae33-40ec-a881-0d5120db57b6_GTC.pdf