

Appearance & Shape: To be free from any defect such as flow, burrs, unevenness etc, As per IEC standards.

Effective Parameters irrespective of material grade (per piece)

- Effective Length (L_e): 30.1 mm
- Effective Area (A_e): 12.2mm²
- Effective Area (A_{Min}): 12.2mm²
- Effective Volume (V_e): 368mm³

Approximate weight : 1.9g/pc



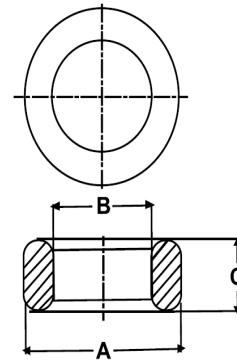
T1205 OL (Un- Coated)

Test Conditions: 10kHz/150mV/CFR COIL,N=01/Lo=Zero/25°C

Material Grade	Initial Permeability (μ_{iac})	AL Value (nH)	Ordering code
CF196	2000 \pm 20%	1000+30%/-20%	CF196T1205
CF139	2100 \pm 20%	1100+30%/-20%	CF139T1205
CF130	3000 \pm 20%	1500+30%/-20%	CF130T1205
CF195A	5000 \pm 20%	2500+30%/-20%	CF195AT1205
CF265	5000 \pm 20%	2500+30%/-20%	CF265T1205
CF190	6000 \pm 20%	3050+30%/-20%	CF190T1205
CF197	7000 \pm 20%	3550+30%/-20%	CF197T1205
CF199	9000 \pm 20%	4600 \pm 30%	CF199T1205

Dimensions(Un-coated Core)

Dimension	Nominal (in mm)	Maximum (in mm)	Minimum (in mm)
A	12.5	12.9	12.1
B	7.5	7.9	7.1
C	5.0	5.3	4.7



For general terms and conditions please visit: http://www.cosmoferrites.com/Downloads/Downloads/bcb70e7c-ae33-40ec-a881-0d5120db57b6_GTC.pdf