

Appearance & Shape: To be free from any defect such as flow, burrs, unevenness etc, As per IEC standards.

Effective Parameters irrespective of material grade (per piece)

- Effective Length (L_e): 61.0 mm
- Effective Area (A_e): 100.2mm²
- Effective Area (A_{Min}): 100.2mm²
- Effective Volume (V_e): 6110mm³

Approximate weight : 29.5g/pc



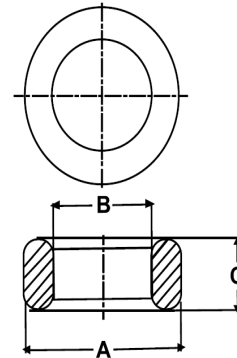
T2815 OL (Un- Coated)

Test Conditions: 10kHz/150mV/CFR COIL,N=01/Lo=Zero/25°C

Material Grade	Initial Permeability (μ_{iac})	AL Value (nH)	Ordering code
CF196	2000 ±20%	4100+30%/-20%	CF196T2815
CF139	2100 ±20%	4300+30%/-20%	CF139T2815
CF130	3000 ±20%	6200+30%/-20%	CF130T2815
CF195A	5000 ±20%	10300+30%/-20%	CF195AT2815
CF265	5000 ±20%	10300+30%/-20%	CF265T2815

Dimensions(Un-coated Core)

Dimension	Nominal (in mm)	Maximum (in mm)	Minimum (in mm)
A	28.0	28.7	27.3
B	14.0	14.5	13.5
C	14.9	15.3	14.5



For general terms and conditions please visit: http://www.cosmoferrites.com/Downloads/Downloads/bcb70e7c-ae33-40ec-a881-0d5120db57b6_GTC.pdf

Regd. Office & Works: Jabli, Distt. Solan, Himachal Pradesh – 173 209 (India)

Tel: +91 1792 277231/32/36, Fax: +91 1792 277234

E-mail: sales@cosmoferrites.com