

Appearance & Shape: To be free from any defect such as flow, burrs, unevenness etc, As per IEC standards.

Effective Parameters irrespective of material grade (per piece)

- Effective Length (L_e): 16.4 mm
- Effective Area (A_e): 10.1mm²
- Effective Area (A_{Min}): 10.1mm²
- Effective Volume (V_e): 166.0mm³

Approximate weight : 0.7g/pc



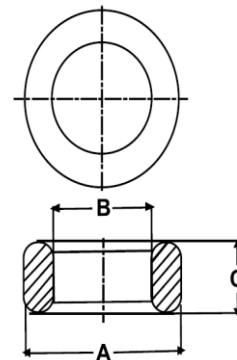
T0705 OL (Un- Coated)

Test Conditions: 10kHz/150mV/CFR COIL,N=01/Lo=Zero/25°C

Material Grade	Initial Permeability (μ_{iac})	AL Value (nH)	Ordering code
CF196	2000 \pm 20%	1550+30%/-20%	CF196T0705
CF139	2100 \pm 20%	1600+30%/-20%	CF139T0705
CF130	3000 \pm 20%	2300+30%/-20%	CF130T0705
CF195A	5000 \pm 20%	3850+30%/-20%	CF195AT0705
CF265	5000 \pm 20%	3850+30%/-20%	CF265T0705
CF190	6000 \pm 20%	4600+30%/-20%	CF190T0705
CF197	7000 \pm 20%	5400+30%/-20%	CF197T0705
CF199	9000 \pm 20%	6950 \pm 30%	CF199T0705

Dimensions(Un-coated Core)

Dimension	Nominal (in mm)	Maximum (in mm)	Minimum (in mm)
A	7.6	7.8	7.4
B	3.4	3.5	3.3
C	5.0	5.2	4.8



For general terms and conditions please visit: http://www.cosmoferrites.com/Downloads/Downloads/bcb70e7c-ae33-40ec-a881-0d5120db57b6_GTC.pdf