

Appearance & Shape: To be free from any defect such as flow, burrs, unevenness etc, As per IEC standards.

Effective Parameters irrespective of material grade (per piece)

- Effective Length (L_e): 23.0 mm
- Effective Area (A_e): 9.8mm²
- Effective Area (A_{Min}): 9.8mm²
- Effective Volume (V_e): 225.4mm³

Approximate weight : 1.2g/pc



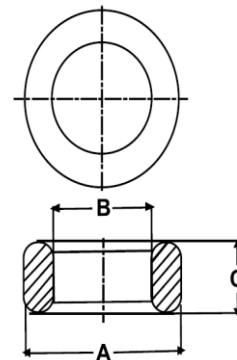
T1005A OL (Un- Coated)

Test Conditions: 10kHz/150mV/CFR COIL,N=01/Lo=Zero/25°C

Material Grade	Initial Permeability (μ_{iac})	AL Value (nH)	Ordering code
CF196	2000 \pm 20%	1050+30%/-20%	CF196T1005A
CF139	2100 \pm 20%	1125+30%/-20%	CF139T1005A
CF130	3000 \pm 20%	1600+30%/-20%	CF130T1005A
CF195A	5000 \pm 20%	2700+30%/-20%	CF195AT1005A
CF265	5000 \pm 20%	2700+30%/-20%	CF265T1005A
CF190	6000 \pm 20%	3200+30%/-20%	CF190T1005A
CF197	7000 \pm 20%	3700+30%/-20%	CF197T1005A
CF199	9000 \pm 20%	4800 \pm 30%	CF199T1005A

Dimensions(Un-coated Core)

Dimension	Nominal (in mm)	Maximum (in mm)	Minimum (in mm)
A	10.0	10.3	9.7
B	5.5	5.7	5.3
C	4.5	4.8	4.2



For general terms and conditions please visit: http://www.cosmoferrites.com/Downloads/Downloads/bcb70e7c-ae33-40ec-a881-0d5120db57b6_GTC.pdf

Regd. Office & Works: Jabli, Distt. Solan, Himachal Pradesh – 173 209 (India)

Tel: +91 1792 277231/32/36, Fax: +91 1792 277234

E-mail: sales@cosmoferrites.com