

# UNSHIELDED SMD POWER INDUCTORS / FPI TYPE

## FEATURES

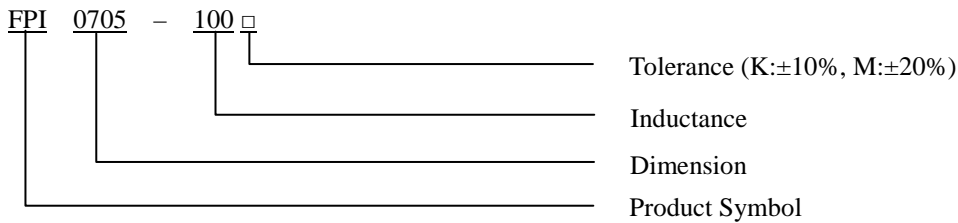
- ◆ Silver Plated Type
- ◆ High power and high saturation
- ◆ Ideal inductors for DC/DC conversion



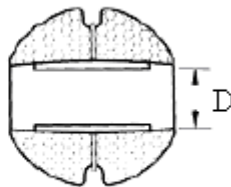
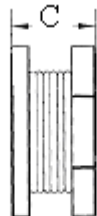
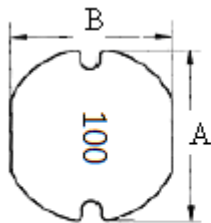
## APPLICATIONS

- ◆ LCD TV
- ◆ DC/DC converter
- ◆ Digital camera
- ◆ Portable communication equipment

## ORDERING CODE



## DIMENSIONS (UNIT: mm)



A	$7.8 \pm 0.3$	m/m
B	$7.0 \pm 0.3$	m/m
C	$5.0 \pm 0.3$	m/m
D	2.1 (REF)	m/m



CORE MASTER ENTERPRISE CO., LTD.

<http://www.coremaster.com.tw>

## UNSHIELDED SMD POWER INDUCTORS / FPI TYPE

### ELECTRICAL CHARACTERISTICS FOR FPI0705

Part No.	Inductance (uH)	RDC ( $\Omega$ )	IDC (A)
FPI0705-1R0 □	1.0	0.020	12.00
FPI0705-1R2 □	1.2	0.023	9.00
FPI0705-1R5 □	1.5	0.024	8.40
FPI0705-2R2 □	2.2	0.028	6.80
FPI0705-3R3 □	3.3	0.031	6.50
FPI0705-3R9 □	3.9	0.033	6.00
FPI0705-4R7 □	4.7	0.035	5.50
FPI0705-5R6 □	5.6	0.035	5.20
FPI0705-6R8 □	6.8	0.040	4.90
FPI0705-8R2 □	8.2	0.050	3.80
FPI0705-100 □	10	0.070	3.50
FPI0705-120 □	12	0.080	3.30
FPI0705-150 □	15	0.090	3.10
FPI0705-180 □	18	0.100	2.90
FPI0705-200 □	20	0.120	2.50
FPI0705-220 □	22	0.130	2.30
FPI0705-270 □	27	0.130	2.30
FPI0705-330 □	33	0.150	2.10
FPI0705-390 □	39	0.160	2.00
FPI0705-470 □	47	0.180	1.80
FPI0705-560 □	56	0.240	1.55
FPI0705-680 □	68	0.280	1.40
FPI0705-820 □	82	0.370	1.10
FPI0705-101 □	100	0.430	1.10
FPI0705-121 □	120	0.470	1.00
FPI0705-151 □	150	0.640	0.95
FPI0705-181 □	180	0.710	0.85
FPI0705-221 □	220	0.960	0.80
FPI0705-271 □	270	1.110	0.70
FPI0705-331 □	330	1.260	0.60
FPI0705-471 □	470	1.600	0.50
FPI0705-561 □	560	1.800	0.40



**CORE MASTER ENTERPRISE CO., LTD.**

<http://www.coremaster.com.tw>

## UNSHIELDED SMD POWER INDUCTORS / FPI TYPE

### ELECTRICAL CHARACTERISTICS FOR FPI0705

Part No.	Inductance (uH)	RDC ( $\Omega$ )	IDC (A)
FPI0705-681 □	680	2.000	0.40
FPI0705-821 □	820	2.570	0.37
FPI0705-102 □	1000	4.000	0.35
FPI0705-222 □	2200	6.500	0.28
FPI0705-332 □	3300	11.000	0.28
FPI0705-402 □	4000	11.000	0.21
FPI0705-502 □	5000	13.500	0.20
FPI0705-682 □	6800	22.000	0.20
FPI0705-103 □	10000	34.000	0.10
FPI0705-253 □	25000	95.000	0.10

\* 100uH 以上 Test Frequency : 1KHZ/1V

\* 100uH 以下 Test Frequency : 2.52MHZ/1V



CORE MASTER ENTERPRISE CO., LTD.

<http://www.coremaster.com.tw>