



# ET-DCM2531R

## ETONM MOTOR

Precise Metal-brush Motor

WEIGHT: 51g(APPROX)

Performance Range

Voltage: 3-24VDC

Speed: 2500-10000rpm

Torque: 10-200g.cm

Typical Applications

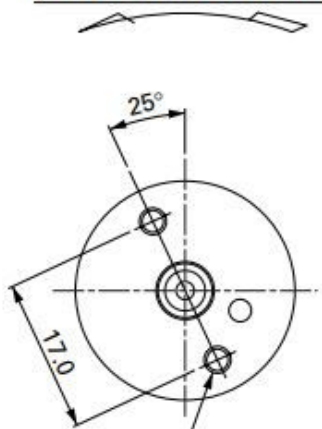
Office Automation

Health and Beauty Care

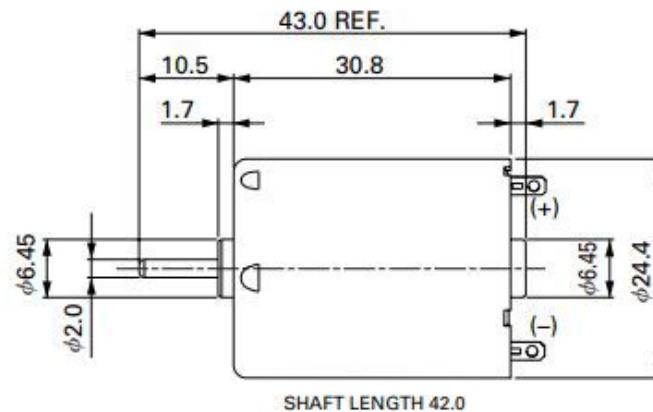
Automobile

MODEL	VOLTAGE		NO LOAD		AT MAXIMUM EFFICIENCY					STALL		
	OPERATING RANGE	NOMINAL	SPEED	CURRENT	SPEED	CURRENT	TORQUE		OUTPUT	TORQUE		CURRENT
			r/min	A	r/min	A	mN-m	g-cm	W	mN-m	g-cm	A
ET-DCM2531R-15370	3~12	12V CONSTANT	5600	0.026	4840	0.17	2.48	25.3	1.25	18.3	187	1.06
ET-DCM2531R-12560	4~12	8V CONSTANT	2400	0.015	1970	0.069	1.57	16.0	0.32	8.82	90	0.32

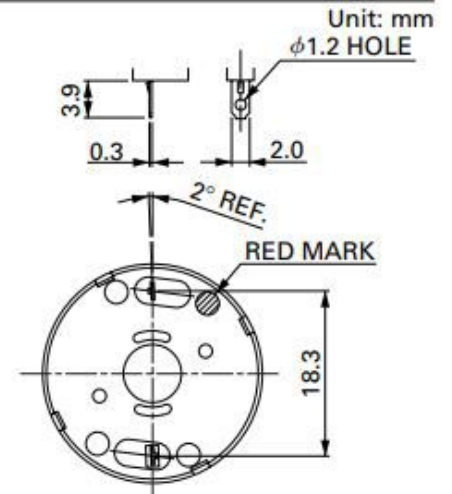
### DIRECTION OF ROTATION



ISO M3.0X0.5 TAPPED HOLE  
2 PLACES



SHAFT LENGTH 42.0



Unit: mm

φ1.2 HOLE

RED MARK

Usable machine screw length 2.0 max. from motor mounting surface.

WEIGHT : 51g (APPROX)