

## PB2211 Series

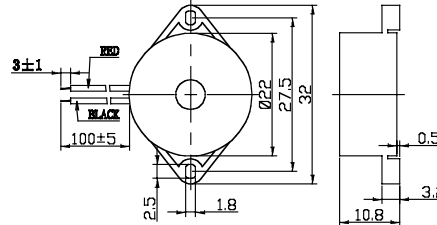
### Specifications:

Parameters	Units	PB2211A12AW
▶ Min Sound Pressure Level at 30cm	dBA	80
Rated Voltage	Vdc	12
Operating Voltage	Vdc	3 - 30
Resonance Frequency	Hz	4500 ± 500
▶ Max Operating Current	mA	5
Tone	-	Continuous
Operating Temperature	°C	-20 - +60
Case Material	-	ABS
Weight	g	4.0



Unit: mm • Tolerance: ±0.5mm

▶ Value applying rated voltage



## PB2312 Series

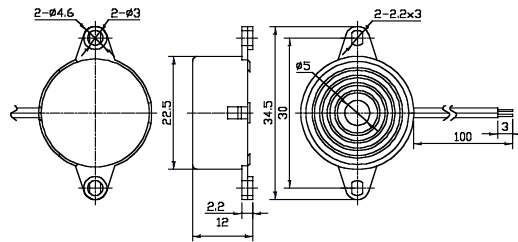
### Specifications:

Parameters	Units	PB2312A12AW
▶ Min Sound Pressure Level at 10cm	dBA	90
Rated Voltage	Vdc	12
Operating Voltage	Vdc	3 - 20
Resonance Frequency	Hz	3000 ± 500
▶ Max Operating Current	mA	20
Tone	-	Continuous
Operating Temperature	°C	-20 - +70
Case Material	-	ABS
Weight	g	3.4



Unit: mm • Tolerance: ±0.5mm

▶ Value applying rated voltage



## PB2398 Series

### Specifications:

Parameters	Units	PB2398A12HP
▶ Min Sound Pressure Level at 30cm	dBA	85
Rated Voltage	Vdc	12
Operating Voltage	Vdc	3 - 20
Resonance Frequency	Hz	3500 ± 500
▶ Max Operating Current	mA	10
Tone	-	Continuous
Operating Temperature	°C	-20 - +80
Case Material	-	PBT
Weight	g	4.0



Unit: mm • Tolerance: ±0.5mm

▶ Value applying rated voltage

