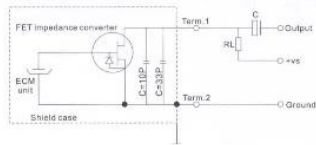


## EM-6013

## Omnidirectional Electret Condenser Microphone



Schematic Diagram( $V_s=2V$ ,  $R_L=2.2K\Omega$ )



### Sensitivity (1kHz, 0dB=1V/Pa)

$-46 \pm 2\text{dB}$	$-44 \pm 2\text{dB}$	$-42 \pm 2\text{dB}$
$-40 \pm 2\text{dB}$	$-38 \pm 2\text{dB}$	$-36 \pm 2\text{dB}$

### Specifications

Impedance:	Less than $2.2k\Omega$
Directivity:	Omnidirectional
Frequency:	20-16,000Hz
Standard operation voltage:	2V
Current consumption:	Max.0.5mA
Sensitivity reduction:	Within 3dB at 1.5V
S/N ratio	More than 58dB

### Dimensional (mm)

### Frequency Response

