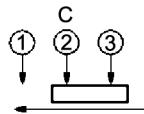


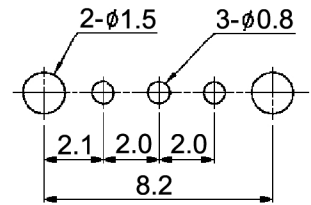
**CIRCUIT DIAGRAM**

C: COMMON PIN  
BOTTOM VIEW



non-shorting

**HOLE LAYOUT**  $\pm 0.05$



**Specifications:**

- Contact rating: 0.1A, 12V DC
- Contact resistance: 20mOhm max.
- Insulation resistance: 100MOhm min. at 500V DC for 1 minute
- Dielectric strength: 500V AC (50/60Hz, 2mA) for 1 minute
- Operating temperature: -40°C to +85°C
- Mechanical life: 10 000 cycles
- Operating force: 200gf +/-100gf
- Material: Spring plate: PBS, washing  
Contact clip: PBS, silver plated  
Slider: PA46, black  
Terminal: brass, silver plated  
Base: phenolic resin, natural  
Frame: SPCC, Sn

Compliance: RohS III (2015/863/EU)

Tolerances: up to 10: $\pm 0.2$ mm above 10-50: $\pm 0.3$ mm	Date	Name
	08/06	dr

**MFP 113 D**

Operating temperature	02/22	dr
Tolerances	05/10	dr
Modifications	Date	Name

**knitter-switch**

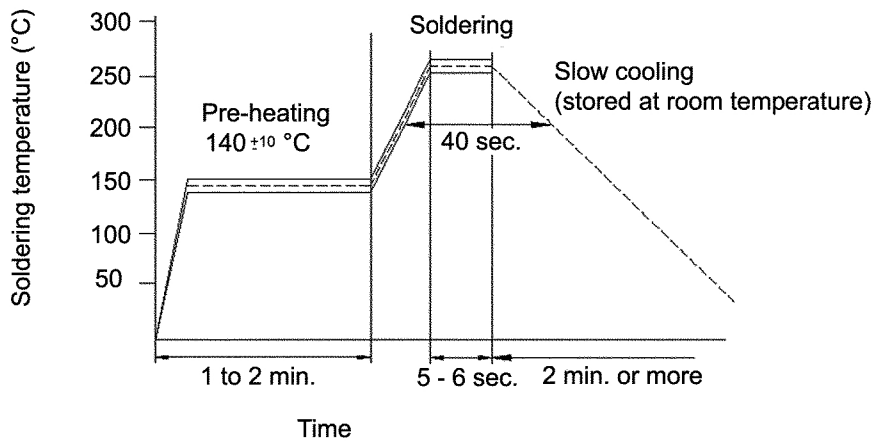
**30 09 57**

Page

1/2

Soldering conditions:

Temperature profile of reflow soldering



Peak: 260 +/-3°C; 5 - 6sec. / 220 +/-5°C; 40sec.

Compliance: RohS III (2015/863/EU)

Tolerances: up to 10: ±0.2mm above 10-50: ±0.3mm			Date	Name	<h1>MFP 113 D</h1>
			08/06	dr	
Operating temperature	02/22	dr	<h2>30 09 57</h2>		Page
Tolerances	05/10	dr			2/2
Modifications	Date	Name	<b>knitter-switch</b>		